

Product datasheet for **CF500908**

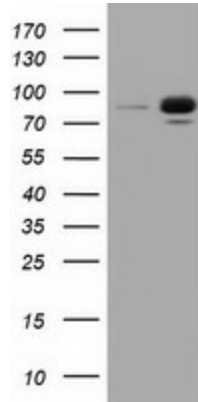
RALBP1 Mouse Monoclonal Antibody [Clone ID: OTI11C6]

Product data:

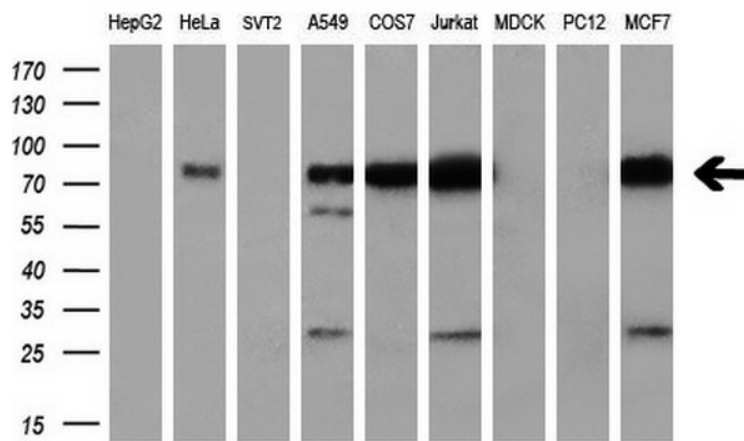
Product Type:	Primary Antibodies
Clone Name:	OTI11C6
Applications:	FC, IF, IP, WB
Recommended Dilution:	WB 1:500, IF 1:100, FLOW 1:100, IP: 4ug/mL
Reactivity:	Human, Mouse, Rat
Host:	Mouse
Isotype:	IgG1
Clonality:	Monoclonal
Immunogen:	Full length human recombinant protein of human RALBP1 (NP_006779) produced in HEK293T cell.
Formulation:	Lyophilized powder (original buffer 1X PBS, pH 7.3, 8% trehalose)
Reconstitution Method:	For reconstitution, we recommend adding 100uL distilled water to a final antibody concentration of about 1 mg/mL. To use this carrier-free antibody for conjugation experiment, we strongly recommend performing another round of desalting process. (OriGene recommends Zeba Spin Desalting Columns, 7KMWCO from Thermo Scientific)
Purification:	Purified from mouse ascites fluids or tissue culture supernatant by affinity chromatography (protein A/G)
Conjugation:	Unconjugated
Storage:	Store at -20°C as received.
Stability:	Stable for 12 months from date of receipt.
Predicted Protein Size:	75.9 kDa
Gene Name:	ralA binding protein 1
Database Link:	NP_006779 Entrez Gene 19765 Mouse Entrez Gene 84014 Rat Entrez Gene 10928 Human Q15311
Synonyms:	RIP1; RLIP1; RLIP76
Protein Pathways:	Pancreatic cancer, Pathways in cancer



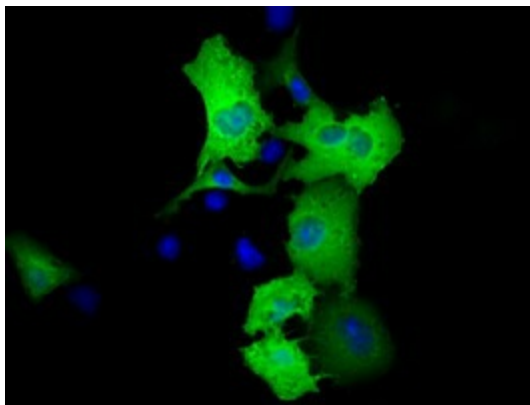
[View online »](#)

Product images:


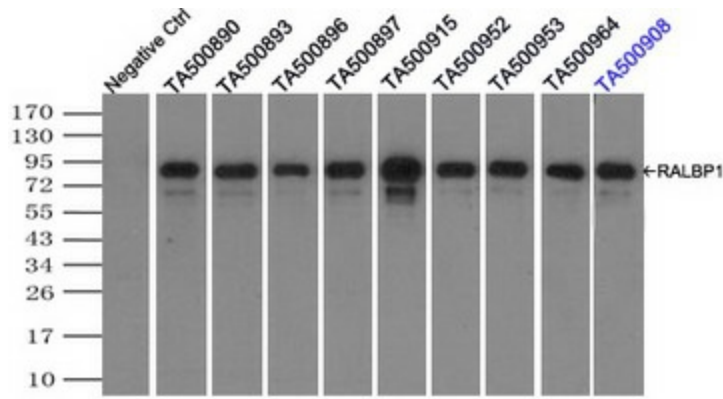
HEK293T cells were transfected with the pCMV6-ENTRY control (Left lane) or pCMV6-ENTRY RALBP1 ([RC201524], Right lane) cDNA for 48 hrs and lysed. Equivalent amounts of cell lysates (5 ug per lane) were separated by SDS-PAGE and immunoblotted with anti-RALBP1. Positive lysates [LY402031] (100ug) and [LC402031] (20ug) can be purchased separately from OriGene.



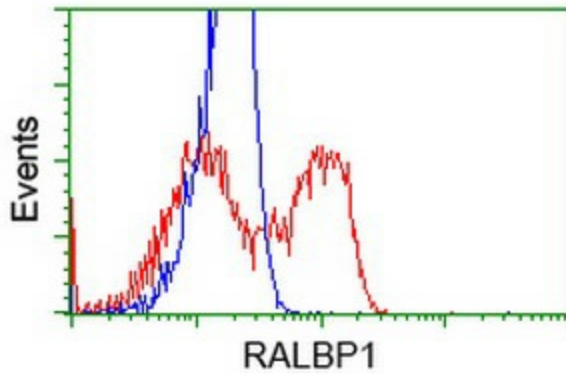
Western blot analysis of extracts (35ug) from 9 different cell lines by using anti-RALBP1 monoclonal antibody (HepG2: human; HeLa: human; SVT2: mouse; A549: human; COS7: monkey; Jurkat: human; MDCK: canine; PC12: rat; MCF7: human) (1:200).



Anti-RALBP1 mouse monoclonal antibody ([TA500908]) immunofluorescent staining of COS7 cells transiently transfected by pCMV6-ENTRY RALBP1 ([RC201524]).



Immunoprecipitation (IP) of RALBP1 by using TrueMab monoclonal anti-RALBP1 antibodies (Negative control: IP without adding anti-RALBP1 antibody.). For each experiment, 500ul of DDK tagged RALBP1 overexpression lysates (at 1:5 dilution with HEK293T lysate), 2ug of anti-RALBP1 antibody and 20ul (0.1mg) of goat anti-mouse conjugated magnetic beads were mixed and incubated overnight. After extensive wash to remove any non-specific binding, the immunoprecipitated products were analyzed with rabbit anti-DDK polyclonal antibody.



HEK293T cells transfected with either [RC201524] overexpress plasmid (Red) or empty vector control plasmid (Blue) were immunostained by anti-RALBP1 antibody ([TA500908]), and then analyzed by flow cytometry.