

Product datasheet for **CF500906**

HIPPI (IFT57) Mouse Monoclonal Antibody [Clone ID: OTI5B6]

Product data:

Product Type:	Primary Antibodies
Clone Name:	OTI5B6
Applications:	IHC, WB
Recommend Dilution:	WB 1:500, IHC 1:50
Reactivity:	Human
Host:	Mouse
Isotype:	IgG1
Clonality:	Monoclonal
Immunogen:	Full length human recombinant protein of human IFT57 (NP_060480) produced in HEK293T cell.
Formulation:	Lyophilized powder (original buffer 1X PBS, pH 7.3, 8% trehalose)
Reconstitution Method:	For reconstitution, we recommend adding 100uL distilled water to a final antibody concentration of about 1 mg/mL. To use this carrier-free antibody for conjugation experiment, we strongly recommend performing another round of desalting process. (OriGene recommends Zeba Spin Desalting Columns, 7KMWCO from Thermo Scientific)
Purification:	Purified from mouse ascites fluids or tissue culture supernatant by affinity chromatography (protein A/G)
Storage:	Store at -20°C as received.
Stability:	Stable for 12 months from date of receipt.
Predicted Protein Size:	48.9 kDa
Gene Name:	Homo sapiens intraflagellar transport 57 (IFT57), mRNA.
Database Link:	NP_060480 Entrez Gene 55081 Human
Background:	Required for the formation of cilia. Plays an indirect role in sonic hedgehog signaling, cilia being required for all activity of the hedgehog pathway (By similarity). Has pro-apoptotic function via its interaction with HIP1, leading to recruit caspase-8 (CASP8) and trigger apoptosis. Has the ability to bind DNA sequence motif 5'-AAAGACATG-3' present in the promoter of caspase genes such as CASP1, CASP8 and CASP10, suggesting that it may act as a transcription regulator.



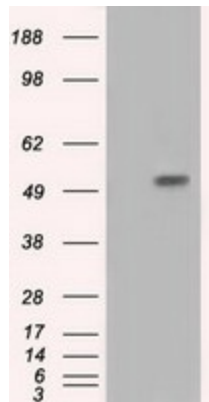
[View online »](#)

Synonyms: ESRRBL1; HIPPI; MHS4R2

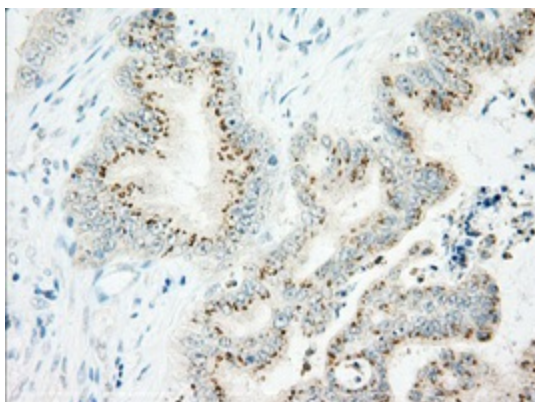
Protein Families: Druggable Genome

Protein Pathways: Huntington's disease

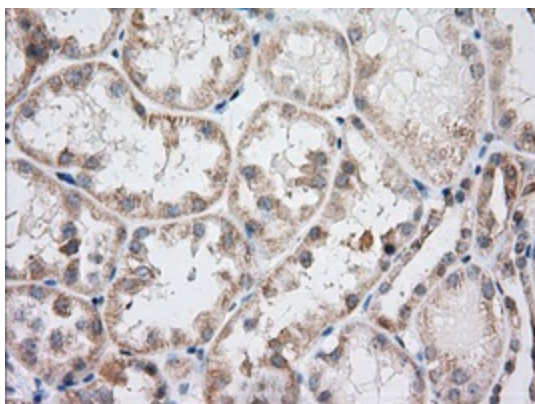
Product images:



HEK293T cells were transfected with the pCMV6-ENTRY control (Left lane) or pCMV6-ENTRY IFT57 [RC204116], Right lane) cDNA for 48 hrs and lysed. Equivalent amounts of cell lysates (5 ug per lane) were separated by SDS-PAGE and immunoblotted with anti-IFT57. Positive lysates [LY402637] (100ug) and [LC402637] (20ug) can be purchased separately from OriGene.



Immunohistochemical staining of paraffin-embedded Adenocarcinoma of Human colon tissue using anti-IFT57 mouse monoclonal antibody. (Heat-induced epitope retrieval by 10mM citric buffer, pH6.0, 100°C for 10min, [TA500906], Dilution 1:50)



Immunohistochemical staining of paraffin-embedded Human Kidney tissue within the normal limits using anti-IFT57 mouse monoclonal antibody. (Heat-induced epitope retrieval by 10mM citric buffer, pH6.0, 100°C for 10min, [TA500906], Dilution 1:50)