

Product datasheet for **CF500905**

CISD1 Mouse Monoclonal Antibody [Clone ID: OTI3A1]

Product data:

Product Type:	Primary Antibodies
Clone Name:	OTI3A1
Applications:	IF, IHC, WB
Recommended Dilution:	WB 1:2000, IHC 1:50, IF 1:100
Reactivity:	Human, Mouse, Rat
Host:	Mouse
Isotype:	IgG1
Clonality:	Monoclonal
Immunogen:	Full length human recombinant protein of human CISD1 (NP_060934) produced in HEK293T cell.
Formulation:	Lyophilized powder (original buffer 1X PBS, pH 7.3, 8% trehalose)
Reconstitution Method:	For reconstitution, we recommend adding 100uL distilled water to a final antibody concentration of about 1 mg/mL. To use this carrier-free antibody for conjugation experiment, we strongly recommend performing another round of desalting process. (OriGene recommends Zeba Spin Desalting Columns, 7KMWCO from Thermo Scientific)
Purification:	Purified from mouse ascites fluids or tissue culture supernatant by affinity chromatography (protein A/G)
Conjugation:	Unconjugated
Storage:	Store at -20°C as received.
Stability:	Stable for 12 months from date of receipt.
Predicted Protein Size:	12.2 kDa
Gene Name:	CDGSH iron sulfur domain 1
Database Link:	NP_060934 Entrez Gene 52637 Mouse Entrez Gene 294362 Rat Entrez Gene 55847 Human Q9NZ45
Background:	CISD1 is a member of the CDGSH domain-containing family and may play a role in the regulation of mitochondrial oxidative capacity

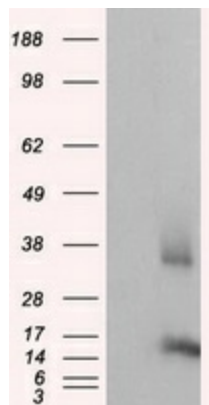


[View online »](#)

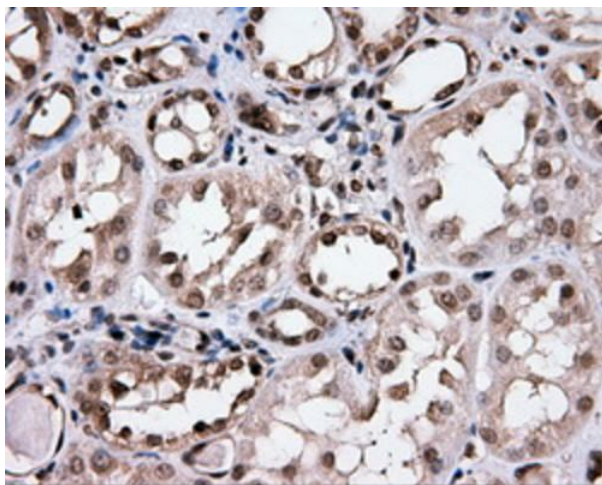
Synonyms: C10orf70; MDS029; mitoNEET; ZCD1

Protein Families: Transmembrane

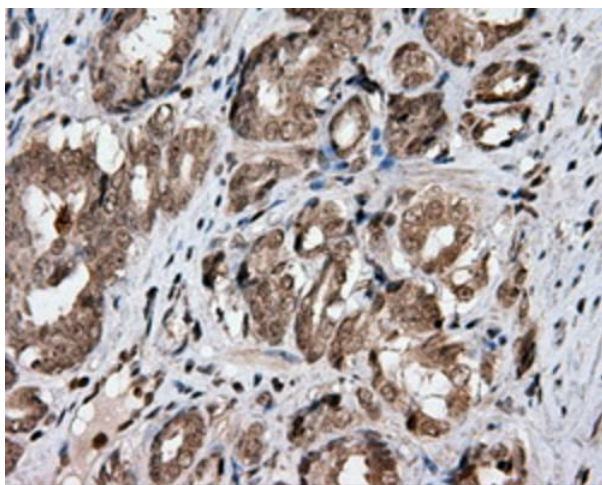
Product images:



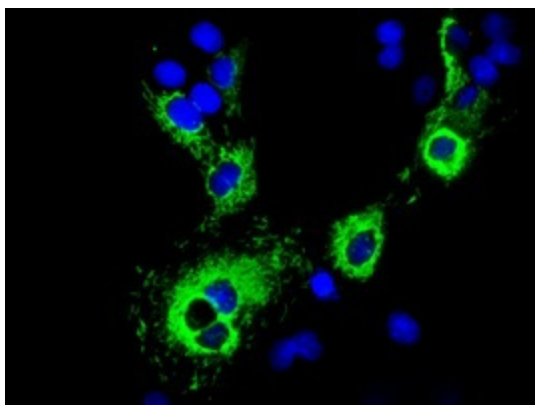
HEK293T cells were transfected with the pCMV6-ENTRY control (Left lane) or pCMV6-ENTRY CISD1 ([RC203308], Right lane) cDNA for 48 hrs and lysed. Equivalent amounts of cell lysates (5 ug per lane) were separated by SDS-PAGE and immunoblotted with anti-CISD1. Positive lysates [LY413042] (100ug) and [LC413042] (20ug) can be purchased separately from OriGene.



Immunohistochemical staining of paraffin-embedded Kidney tissue within the normal limits using anti-CISD1 mouse monoclonal antibody. (Heat-induced epitope retrieval by 10mM citric buffer, pH6.0, 100°C for 10min, [TA500905], Dilution 1:50)



Immunohistochemical staining of paraffin-embedded Carcinoma of prostate tissue using anti-CISD1 mouse monoclonal antibody. (Heat-induced epitope retrieval by 10mM citric buffer, pH6.0, 100°C for 10min, [TA500905], Dilution 1:50)



Anti-CISD1 mouse monoclonal antibody ([TA500905]) immunofluorescent staining of COS7 cells transiently transfected by pCMV6-ENTRY CISD1 ([RC203308]).