

Product datasheet for **CF500904**

CISD1 Mouse Monoclonal Antibody [Clone ID: OTI2B3]

Product data:

Product Type:	Primary Antibodies
Clone Name:	OTI2B3
Applications:	FC, IF, WB
Recommended Dilution:	IHC 1:100~400, WB: 1:200
Reactivity:	Human, Mouse, Rat
Host:	Mouse
Isotype:	IgG1
Clonality:	Monoclonal
Immunogen:	Full length human recombinant protein of human CISD1 (NP_060934) produced in HEK293T cell.
Formulation:	Lyophilized powder (original buffer 1X PBS, pH 7.3, 8% trehalose)
Reconstitution Method:	For reconstitution, we recommend adding 100uL distilled water to a final antibody concentration of about 1 mg/mL. To use this carrier-free antibody for conjugation experiment, we strongly recommend performing another round of desalting process. (OriGene recommends Zeba Spin Desalting Columns, 7KMWCO from Thermo Scientific)
Purification:	Purified from mouse ascites fluids or tissue culture supernatant by affinity chromatography (protein A/G)
Conjugation:	Unconjugated
Storage:	Store at -20°C as received.
Stability:	Stable for 12 months from date of receipt.
Predicted Protein Size:	12.0 kDa
Gene Name:	CDGSH iron sulfur domain 1
Database Link:	NP_060934 Entrez Gene 52637 Mouse Entrez Gene 294362 Rat Entrez Gene 55847 Human Q9NZ45
Background:	CISD1 is a member of the CDGSH domain-containing family and may play a role in the regulation of mitochondrial oxidative capacity (Wiley et al., 2007, 2007 [PubMed 17376863] [PubMed 17584744]). [supplied by OMIM]

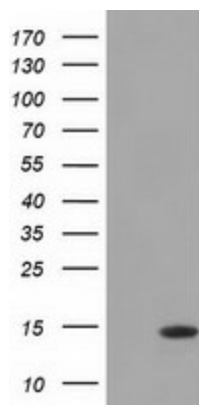


[View online »](#)

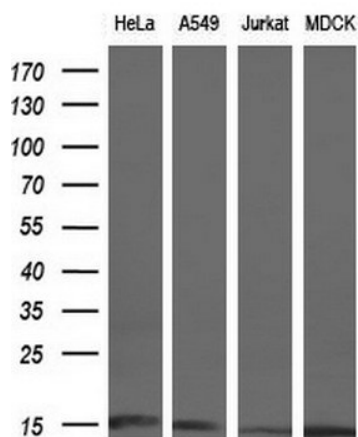
Synonyms: C10orf70; MDS029; mitoNEET; ZCD1

Protein Families: Transmembrane

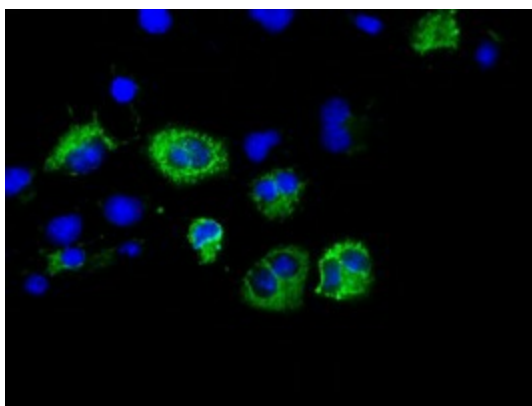
Product images:



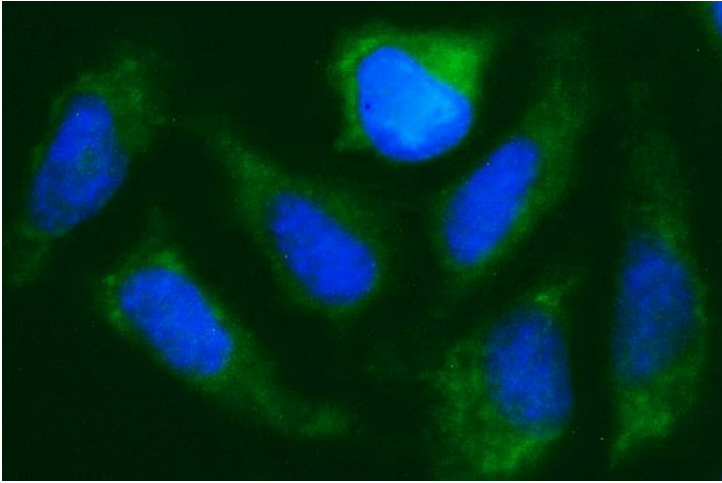
HEK293T cells were transfected with the pCMV6-ENTRY control (Cat# [PS100001], Left lane) or pCMV6-ENTRY CISD1 (Cat# [RC203308], Right lane) cDNA for 48 hrs and lysed. Equivalent amounts of cell lysates (5 ug per lane) were separated by SDS-PAGE and immunoblotted with anti-CISD1 (Cat# [TA500904]). Positive lysates [LY413042] (100ug) and [LC413042] (20ug) can be purchased separately from OriGene.



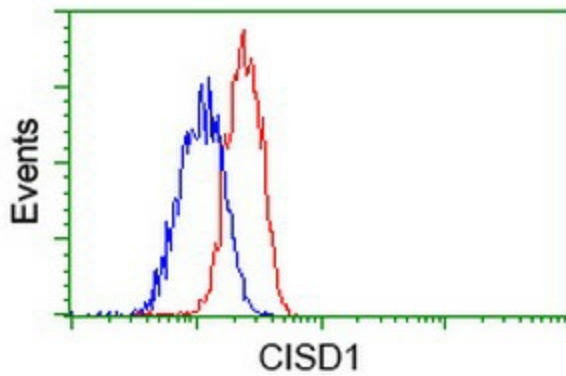
Western blot analysis of extracts (10ug) from 4 different cell lines by using anti-CISD1 monoclonal antibody (1:200).



Anti-CISD1 mouse monoclonal antibody ([TA500904]) immunofluorescent staining of COS7 cells transiently transfected by pCMV6-ENTRY CISD1 ([RC203308]).



Immunofluorescent staining of HeLa cells using anti-CISD1 mouse monoclonal antibody ([TA500904]).



Flow cytometric Analysis of Jurkat cells, using anti-CISD1 antibody ([TA500904]), (Red), compared to a nonspecific negative control antibody (TA50011), (Blue).