

## Product datasheet for **CF500883**

### HSP90AA1 Mouse Monoclonal Antibody [Clone ID: OTI3B5]

#### Product data:

Product Type:	Primary Antibodies
Clone Name:	OTI3B5
Applications:	WB
Recommended Dilution:	WB 1:2000
Reactivity:	Human, Mouse, Rat
Host:	Mouse
Isotype:	IgG1
Clonality:	Monoclonal
Immunogen:	Full length human recombinant protein of human HSP90AA1 (NP_005339) produced in HEK293T cell.
Formulation:	Lyophilized powder (original buffer 1X PBS, pH 7.3, 8% trehalose)
Reconstitution Method:	For reconstitution, we recommend adding 100uL distilled water to a final antibody concentration of about 1 mg/mL. To use this carrier-free antibody for conjugation experiment, we strongly recommend performing another round of desalting process. (OriGene recommends Zeba Spin Desalting Columns, 7KMWCO from Thermo Scientific)
Purification:	Purified from mouse ascites fluids or tissue culture supernatant by affinity chromatography (protein A/G)
Conjugation:	Unconjugated
Storage:	Store at -20°C as received.
Stability:	Stable for 12 months from date of receipt.
Predicted Protein Size:	84.7 kDa
Gene Name:	heat shock protein 90 alpha family class A member 1
Database Link:	<a href="#">NP_005339</a> <a href="#">Entrez Gene 15519 Mouse</a> <a href="#">Entrez Gene 299331 Rat</a> <a href="#">Entrez Gene 3320 Human</a> <a href="#">P07900</a>



[View online »](#)

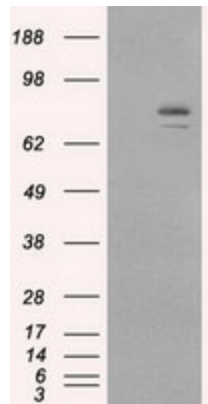
**Background:** HSP90 proteins are highly conserved molecular chaperones that have key roles in signal transduction, protein folding, protein degradation, and morphologic evolution. HSP90 proteins normally associate with other cochaperones and play important roles in folding newly synthesized proteins or stabilizing and refolding denatured proteins after stress. There are 2 major cytosolic HSP90 proteins, HSP90AA1, an inducible form, and HSP90AB1 (MIM 140572), a constitutive form. Other HSP90 proteins are found in endoplasmic reticulum (HSP90B1; MIM 191175) and mitochondria

**Synonyms:** EL52; HSP86; Hsp89; HSP89A; Hsp90; HSP90A; HSP90N; HSPC1; HSPCA; HSPCAL1; HSPCAL4; HSPN; LAP-2; LAP2

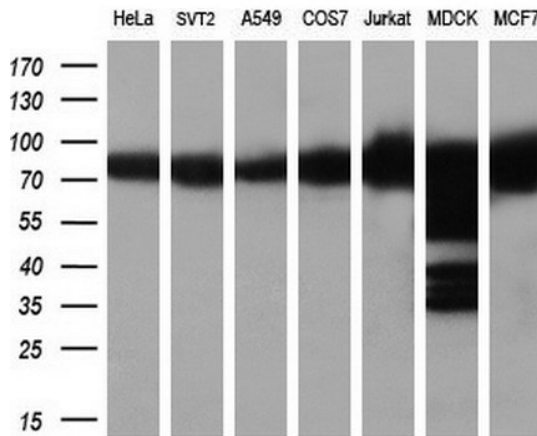
**Protein Families:** Druggable Genome

**Protein Pathways:** Antigen processing and presentation, NOD-like receptor signaling pathway, Pathways in cancer, Progesterone-mediated oocyte maturation, Prostate cancer

**Product images:**



HEK293T cells were transfected with the pCMV6-ENTRY control (Cat# [PS100001], Left lane) or pCMV6-ENTRY HSP90AA1 (Cat# [RC212496], Right lane) cDNA for 48 hrs and lysed. Equivalent amounts of cell lysates (5 ug per lane) were separated by SDS-PAGE and immunoblotted with anti-HSP90AA1 (Cat# [TA500883]). Positive lysates [LY417365] (100ug) and [LC417365] (20ug) can be purchased separately from OriGene.



Western blot analysis of extracts (10ug) from 7 different cell lines by using anti-HSP90AA1 monoclonal antibody (1:200).