

Product datasheet for **CF500876**

GRASP1 (GRIPAP1) Mouse Monoclonal Antibody [Clone ID: OTI1E3]

Product data:

Product Type:	Primary Antibodies
Clone Name:	OTI1E3
Applications:	FC, IF, IHC, WB
Recommended Dilution:	WB 1:1000, IHC 1:50, IF 1:100, Flow 1:100
Reactivity:	Human, Mouse, Rat
Host:	Mouse
Isotype:	IgG1
Clonality:	Monoclonal
Immunogen:	Full length human recombinant protein of human GRIPAP1 (NP_064522) produced in HEK293T cell.
Formulation:	Lyophilized powder (original buffer 1X PBS, pH 7.3, 8% trehalose)
Reconstitution Method:	For reconstitution, we recommend adding 100uL distilled water to a final antibody concentration of about 1 mg/mL. To use this carrier-free antibody for conjugation experiment, we strongly recommend performing another round of desalting process. (OriGene recommends Zeba Spin Desalting Columns, 7KMWCO from Thermo Scientific)
Purification:	Purified from mouse ascites fluids or tissue culture supernatant by affinity chromatography (protein A/G)
Conjugation:	Unconjugated
Storage:	Store at -20°C as received.
Stability:	Stable for 12 months from date of receipt.
Predicted Protein Size:	96.0 kDa
Gene Name:	GRIP1 associated protein 1
Database Link:	NP_064522 Entrez Gene 54645 Mouse Entrez Gene 116493 Rat Entrez Gene 56850 Human Q4V328



[View online »](#)

Background:

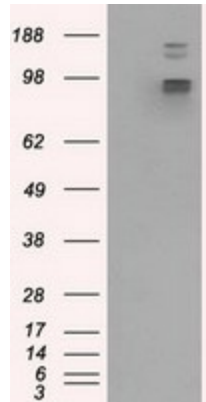
This gene encodes a guanine nucleotide exchange factor for the Ras family of small G proteins (RasGEF). In brain studies, the encoded protein was found with the GRIP/AMPA receptor complex. Multiple alternatively spliced transcript variants have been described that encode different protein isoforms; however, the full-length nature and biological validity of all of these variants have not been determined

Synonyms:

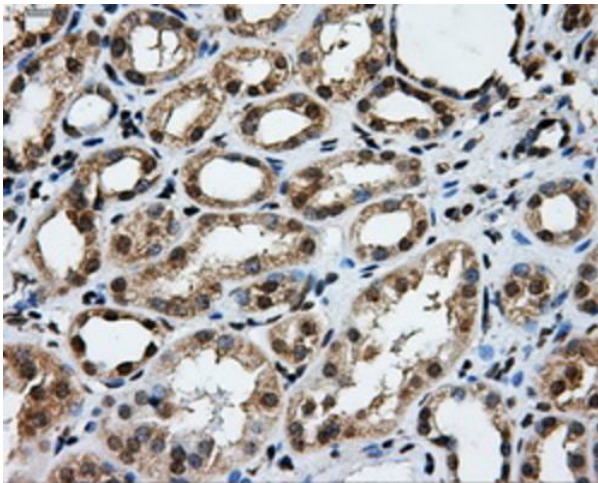
GRASP-1

Protein Families:

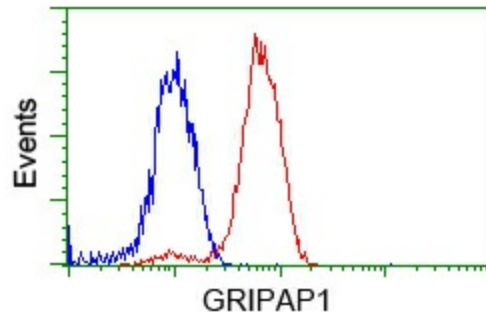
Druggable Genome

Product images:


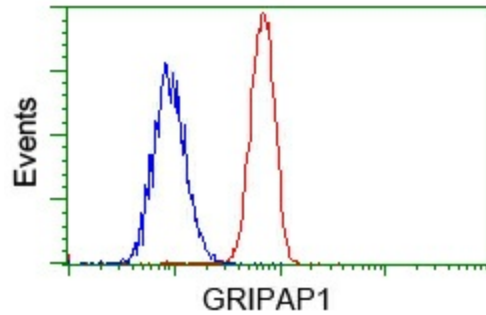
HEK293T cells were transfected with the pCMV6-ENTRY control (Cat# [PS100001], Left lane) or pCMV6-ENTRY GRIPAP1 (Cat# [RC210936], Right lane) cDNA for 48 hrs and lysed. Equivalent amounts of cell lysates (5 ug per lane) were separated by SDS-PAGE and immunoblotted with anti-GRIPAP1 (Cat# [TA500876]). Positive lysates [LY402754] (100ug) and [LC402754] (20ug) can be purchased separately from OriGene.



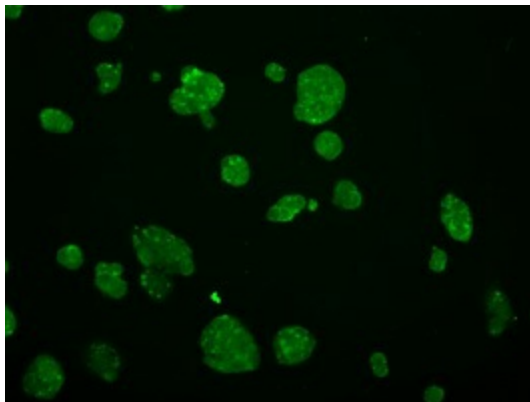
Immunohistochemical staining of paraffin-embedded Kidney tissue within the normal limits using anti-GRIPAP1 mouse monoclonal antibody. (Heat-induced epitope retrieval by 10mM citric buffer, pH6.0, 100°C for 10min, [TA500876], Dilution 1:50)



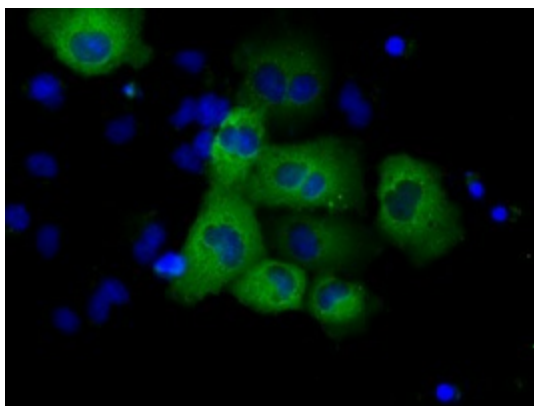
Flow cytometric analysis of Jurkat cells, using anti-GRIPAP1 antibody ([TA500876]), (Red) compared to a nonspecific negative control antibody (TA50011) (Blue).



Flow cytometric analysis of HeLa cells, using anti-GRIPAP1 antibody ([TA500876]), (Red) compared to a nonspecific negative control antibody (TA50011) (Blue).



Immunofluorescent staining of HepG2 cells using anti-GRIPAP1 mouse monoclonal antibody ([TA500876]).



Anti-GRIPAP1 mouse monoclonal antibody ([TA500876]) immunofluorescent staining of COS7 cells transiently transfected by pCMV6-ENTRY GRIPAP1 ([RC210936]).