

Product datasheet for **CF500872**

ELAVL1 Mouse Monoclonal Antibody [Clone ID: OTI14F11]

Product data:

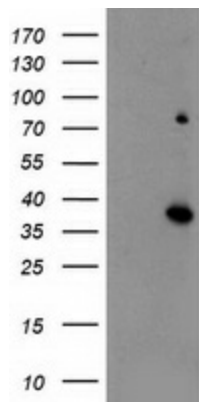
Product Type:	Primary Antibodies
Clone Name:	OTI14F11
Applications:	WB
Recommended Dilution:	WB 1:100
Reactivity:	Human, Mouse, Rat
Host:	Mouse
Isotype:	IgG1
Clonality:	Monoclonal
Immunogen:	Full length human recombinant protein of human ELAVL1 (NP_001410) produced in HEK293T cell.
Formulation:	Lyophilized powder (original buffer 1X PBS, pH 7.3, 8% trehalose)
Reconstitution Method:	For reconstitution, we recommend adding 100uL distilled water to a final antibody concentration of about 1 mg/mL. To use this carrier-free antibody for conjugation experiment, we strongly recommend performing another round of desalting process. (OriGene recommends Zeba Spin Desalting Columns, 7KMWCO from Thermo Scientific)
Purification:	Purified from mouse ascites fluids or tissue culture supernatant by affinity chromatography (protein A/G)
Conjugation:	Unconjugated
Storage:	Store at -20°C as received.
Stability:	Stable for 12 months from date of receipt.
Predicted Protein Size:	36.1 kDa
Gene Name:	ELAV like RNA binding protein 1
Database Link:	NP_001410 Entrez Gene 15568 MouseEntrez Gene 363854 RatEntrez Gene 1994 Human Q15717
Background:	The protein encoded by this gene is a member of the ELAVL protein family. This encoded protein contains 3 RNA-binding domains and binds cis-acting AU-rich elements. It destabilizes mRNAs and thereby regulates gene expression.



[View online »](#)

Synonyms: ELAV1; Hua; HUR; MeIG

Product images:



HEK293T cells were transfected with the pCMV6-ENTRY control (Left lane) or pCMV6-ENTRY ELAVL1 ([RC201562], Right lane) cDNA for 48 hrs and lysed. Equivalent amounts of cell lysates (5 ug per lane) were separated by SDS-PAGE and immunoblotted with anti-ELAVL1. Positive lysates [LY400549] (100ug) and [LC400549] (20ug) can be purchased separately from OriGene.