

Product datasheet for **CF500864**

LOX Mouse Monoclonal Antibody [Clone ID: OTI9B5]

Product data:

Product Type:	Primary Antibodies
Clone Name:	OTI9B5
Applications:	IF, WB
Recommended Dilution:	IF 1:100, FLOW 1:100
Reactivity:	Human, Mouse, Rat
Host:	Mouse
Isotype:	IgG1
Clonality:	Monoclonal
Immunogen:	Human recombinant protein fragment corresponding to amino acids 22-168 of human LOX (NP_002308) produced in HEK293T cell.
Formulation:	Lyophilized powder (original buffer 1X PBS, pH 7.3, 8% trehalose)
Reconstitution Method:	For reconstitution, we recommend adding 100uL distilled water to a final antibody concentration of about 1 mg/mL. To use this carrier-free antibody for conjugation experiment, we strongly recommend performing another round of desalting process. (OriGene recommends Zeba Spin Desalting Columns, 7KMWCO from Thermo Scientific)
Purification:	Purified from mouse ascites fluids or tissue culture supernatant by affinity chromatography (protein A/G)
Conjugation:	Unconjugated
Storage:	Store at -20°C as received.
Stability:	Stable for 12 months from date of receipt.
Predicted Protein Size:	46.8 kDa
Gene Name:	lysyl oxidase
Database Link:	NP_002308 Entrez Gene 16948 Mouse Entrez Gene 24914 Rat Entrez Gene 4015 Human P28300



[View online »](#)

Background:

The protein encoded by this gene is an extracellular copper enzyme that initiates the crosslinking of collagens and elastin. The enzyme catalyzes oxidative deamination of the epsilon-amino group in certain lysine and hydroxylysine residues of collagens and lysine residues of elastin. In addition to crosslinking extracellular matrix proteins, the encoded protein may have a role in tumor suppression. Defects in this gene are a cause of autosomal recessive cutis laxa type I (CL type I). Two transcript variants encoding different isoforms have been found for this gene. [provided by RefSeq]

Synonyms:

MGC105112

Protein Families:

Druggable Genome, Secreted Protein

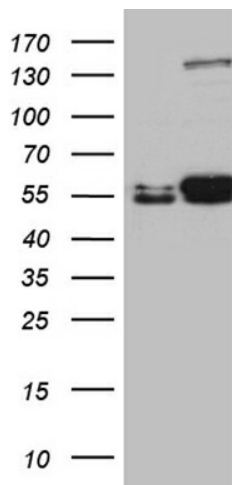
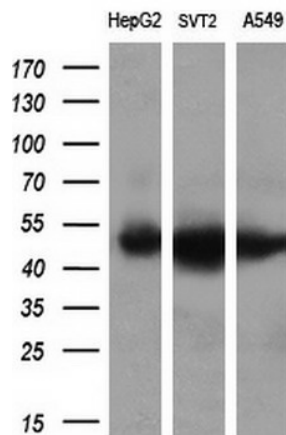
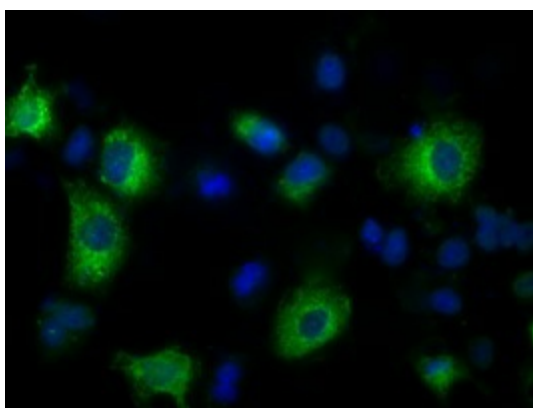
Product images:


Figure Legend: HEK293T cells were transfected with the pCMV6-ENTRY control (Left lane) or pCMV6-ENTRY LOX ([RC213323], Right lane) cDNA for 48 hrs and lysed. Equivalent amounts of cell lysates (5 ug per lane) were separated by SDS-PAGE and immunoblotted with anti-LOX (1:500). Positive lysates [LY400843] (100ug) and [LC400843] (20ug) can be purchased separately from OriGene.



Western blot analysis of extracts (10ug) from 3 different cell lines by using anti-LOX monoclonal antibody (1:200).



Anti-LOX mouse monoclonal antibody ([TA500864]) immunofluorescent staining of COS7 cells transiently transfected by pCMV6-ENTRY LOX ([RC213323]).