

Product datasheet for **CF500848**

Transferrin (TF) Mouse Monoclonal Antibody [Clone ID: OTI5G2]

Product data:

Product Type:	Primary Antibodies
Clone Name:	OTI5G2
Applications:	FC, IF, WB
Recommended Dilution:	IF 1:100, FLOW 1:100
Reactivity:	Human
Host:	Mouse
Isotype:	IgG1
Clonality:	Monoclonal
Immunogen:	Full length human recombinant protein of human TF(NP_001054) produced in HEK293T cell.
Formulation:	Lyophilized powder (original buffer 1X PBS, pH 7.3, 8% trehalose)
Reconstitution Method:	For reconstitution, we recommend adding 100uL distilled water to a final antibody concentration of about 1 mg/mL. To use this carrier-free antibody for conjugation experiment, we strongly recommend performing another round of desalting process. (OriGene recommends Zeba Spin Desalting Columns, 7KMWCO from Thermo Scientific)
Purification:	Purified from mouse ascites fluids or tissue culture supernatant by affinity chromatography (protein A/G)
Conjugation:	Unconjugated
Storage:	Store at -20°C as received.
Stability:	Stable for 12 months from date of receipt.
Predicted Protein Size:	75.1 kDa
Gene Name:	transferrin
Database Link:	NP_001054 Entrez Gene 7018 Human P02787



[View online »](#)

Background:

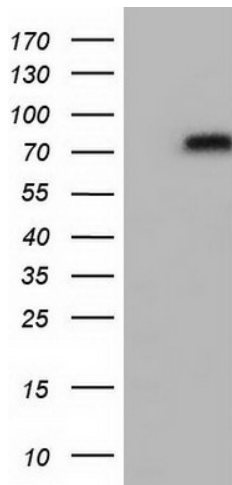
This gene encodes a glycoprotein with an approximate molecular weight of 76.5 kDa. It is thought to have been created as a result of an ancient gene duplication event that led to generation of homologous C and N-terminal domains each of which binds one ion of ferric iron. The function of this protein is to transport iron from the intestine, reticuloendothelial system, and liver parenchymal cells to all proliferating cells in the body. This protein may also have a physiologic role as granulocyte/pollen-binding protein (GPBP) involved in the removal of certain organic matter and allergens from serum. [provided by RefSeq]

Synonyms:

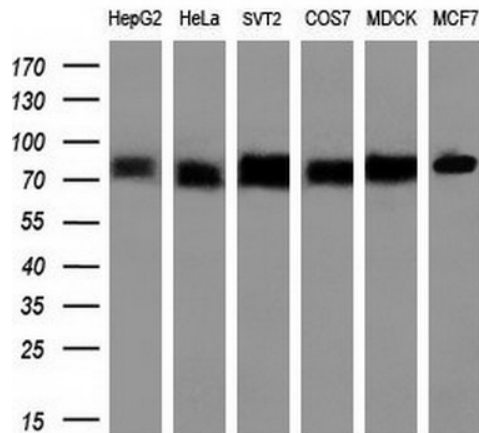
HEL-S-71p; PRO1557; PRO2086; TFQTL1

Protein Families:

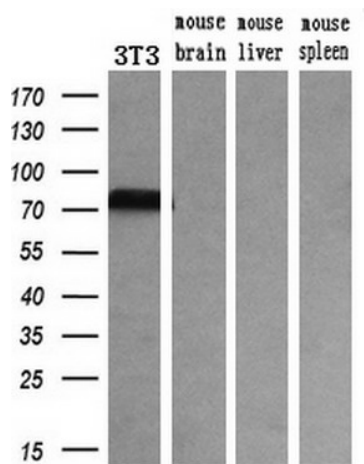
Druggable Genome, Secreted Protein

Product images:


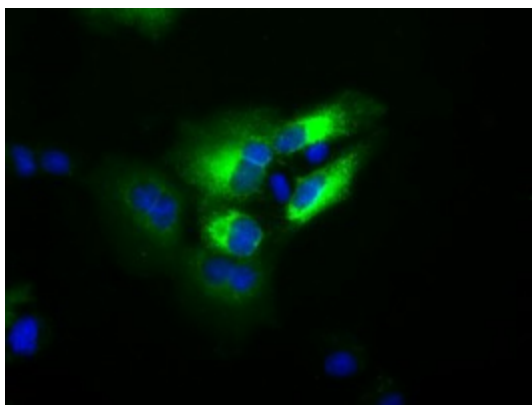
HEK293T cells were transfected with the pCMV6-ENTRY control (Cat# [PS100001], Left lane) or pCMV6-ENTRY TF (Cat# [RC209184], Right lane) cDNA for 48 hrs and lysed. Equivalent amounts of cell lysates (5 ug per lane) were separated by SDS-PAGE and immunoblotted with anti-TF (Cat# [TA500848])(1:2000). Positive lysates [LY400433] (100ug) and [LC400433] (20ug) can be purchased separately from OriGene.



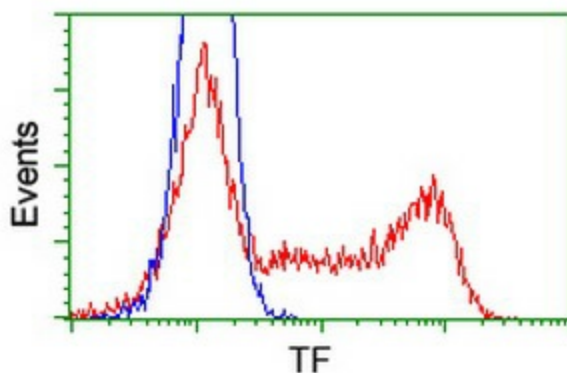
Western blot analysis of extracts (10ug) from 6 different cell lines by using anti-TF monoclonal antibody (1:1000).



Western blot analysis of extracts (10ug) from a mouse cell line and 3 different mouse tissues by using anti-TF monoclonal antibody (1:200).



Anti-TF mouse monoclonal antibody ([TA500848]) immunofluorescent staining of COS7 cells transiently transfected by pCMV6-ENTRY TF ([RC209184]).



HEK293T cells transfected with either [RC209184] overexpress plasmid (Red) or empty vector control plasmid (Blue) were immunostained by anti-TF antibody ([TA500848]), and then analyzed by flow cytometry.