

## Product datasheet for **CF500839**

### PKMYT1 Mouse Monoclonal Antibody [Clone ID: OTI2B4]

#### Product data:

|                         |  |
|-------------------------|--|
| Product Type:           | Primary Antibodies   |
| Clone Name:             | OTI2B4   |
| Applications:           | FC, IF, WB   |
| Recommended Dilution:   | IHC 1:100~200, WB: 1:200   |
| Reactivity:             | Human, Mouse, Rat  |
| Host:                   | Mouse  |
| Isotype:                | IgG2a  |
| Clonality:              | Monoclonal   |
| Immunogen:              | Full length human recombinant protein of human PKMYT1 (NP_004194) produced in HEK293T cell.  |
| Formulation:            | Lyophilized powder (original buffer 1X PBS, pH 7.3, 8% trehalose)  |
| Reconstitution Method:  | For reconstitution, we recommend adding 100uL distilled water to a final antibody concentration of about 1 mg/mL. To use this carrier-free antibody for conjugation experiment, we strongly recommend performing another round of desalting process. (OriGene recommends Zeba Spin Desalting Columns, 7KMWCO from Thermo Scientific) |
| Purification:           | Purified from mouse ascites fluids or tissue culture supernatant by affinity chromatography (protein A/G)  |
| Conjugation:            | Unconjugated   |
| Storage:                | Store at -20°C as received.  |
| Stability:              | Stable for 12 months from date of receipt.   |
| Predicted Protein Size: | 54.3 kDa   |
| Gene Name:              | protein kinase, membrane associated tyrosine/threonine 1   |
| Database Link:          | <a href="#">NP_004194</a><br><a href="#">Entrez Gene 268930</a> <a href="#">MouseEntrez Gene 287101</a> <a href="#">RatEntrez Gene 9088</a> <a href="#">Human Q99640</a>   |



[View online »](#)

**Background:**

The protein encoded by this gene is a member of the serine/threonine protein kinase family. This kinase preferentially phosphorylates and inactivates cell division cycle 2 protein (CDC2), and thus negatively regulates cell cycle G2/M transition. This kinase is associated with the membrane throughout the cell cycle. Its activity is highly regulated during the cell cycle. Protein kinases AKT1/PKB and PLK (Polo-like kinase) have been shown to phosphorylate and regulate the activity of this kinase. Alternatively spliced transcript variants encoding distinct isoforms have been reported. [provided by RefSeq]

**Synonyms:**

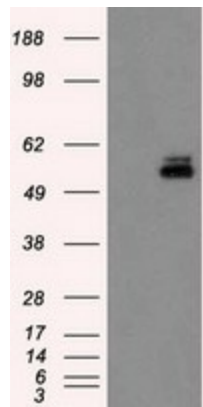
MYT1; PPP1R126

**Protein Families:**

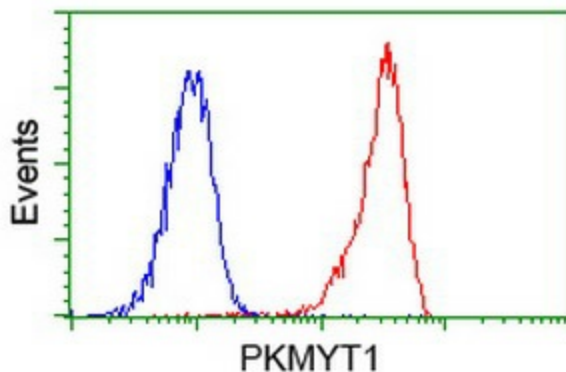
Druggable Genome, Protein Kinase

**Protein Pathways:**

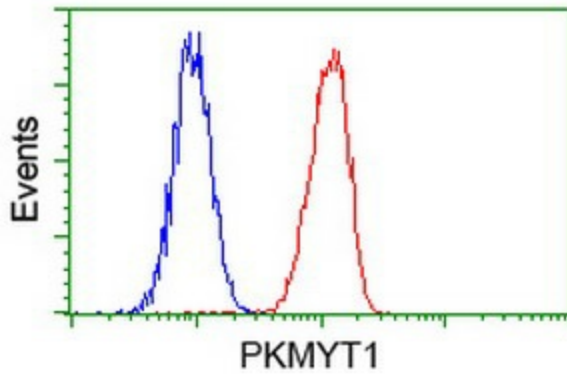
Cell cycle, Oocyte meiosis, Progesterone-mediated oocyte maturation

**Product images:**


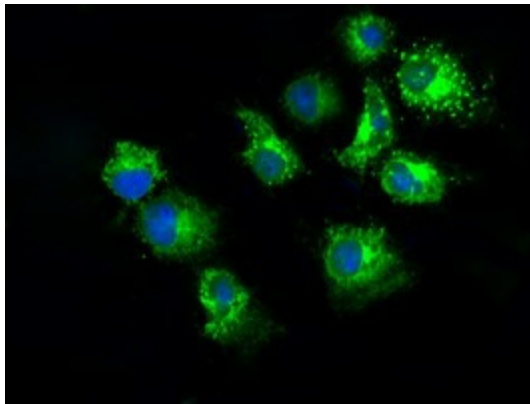
HEK293T cells were transfected with the pCMV6-ENTRY control (Left lane) or pCMV6-ENTRY PKMYT1 ([RC222657], Right lane) cDNA for 48 hrs and lysed. Equivalent amounts of cell lysates (5 ug per lane) were separated by SDS-PAGE and immunoblotted with anti-PKMYT1. Positive lysates [LY401358] (100ug) and [LC401358] (20ug) can be purchased separately from OriGene.



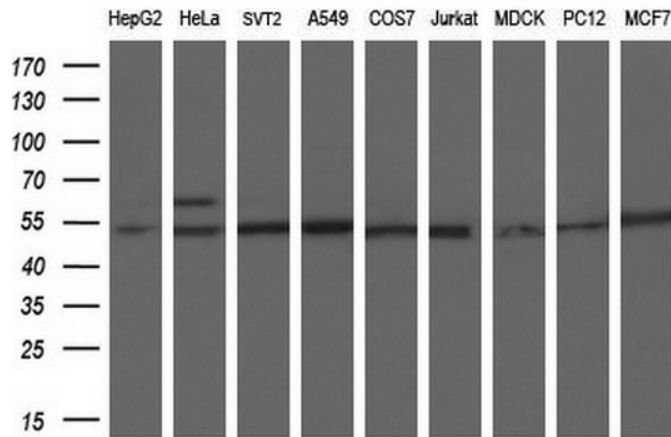
Flow cytometric Analysis of Jurkat cells, using anti-PKMYT1 antibody ([TA500839]), (Red), compared to a nonspecific negative control antibody, (Blue).



Flow cytometric Analysis of HeLa cells, using anti-PKMYT1 antibody ([TA500839]), (Red), compared to a nonspecific negative control antibody, (Blue).



Anti-PKMYT1 mouse monoclonal antibody ([TA500839]) immunofluorescent staining of COS7 cells transiently transfected by pCMV6-ENTRY PKMYT1 ([RC222657]).



Western blot analysis of extracts (35ug) from 9 different cell lines by using anti-PKMYT1 monoclonal antibody (HepG2: human; HeLa: human; SVT2: mouse; A549: human; COS7: monkey; Jurkat: human; MDCK: canine; PC12: rat; MCF7: human) (1:200).