

Product datasheet for **CF500820**

DCXR Mouse Monoclonal Antibody [Clone ID: OTI4D11]

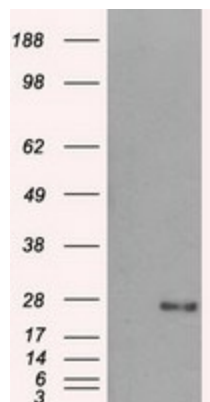
Product data:

Product Type:	Primary Antibodies
Clone Name:	OTI4D11
Applications:	FC, IF, IHC, WB
Recommended Dilution:	WB 1:500, IHC 1:50, IF 1:100, Flow 1:100
Reactivity:	Human
Host:	Mouse
Isotype:	IgG1
Clonality:	Monoclonal
Immunogen:	Full length human recombinant protein of human DCXR (NP_057370) produced in HEK293T cell.
Formulation:	Lyophilized powder (original buffer 1X PBS, pH 7.3, 8% trehalose)
Reconstitution Method:	For reconstitution, we recommend adding 100uL distilled water to a final antibody concentration of about 1 mg/mL. To use this carrier-free antibody for conjugation experiment, we strongly recommend performing another round of desalting process. (OriGene recommends Zeba Spin Desalting Columns, 7KMWCO from Thermo Scientific)
Purification:	Purified from mouse ascites fluids or tissue culture supernatant by affinity chromatography (protein A/G)
Conjugation:	Unconjugated
Storage:	Store at -20°C as received.
Stability:	Stable for 12 months from date of receipt.
Predicted Protein Size:	25.9 kDa
Gene Name:	dicarbonyl and L-xylulose reductase
Database Link:	NP_057370 Entrez Gene 51181 Human Q7Z4W1
Background:	DCXR is an enzyme that has both diacetyl reductase (EC 1.1.1.5) and L-xylulose reductase (EC 1.1.1.10) activities

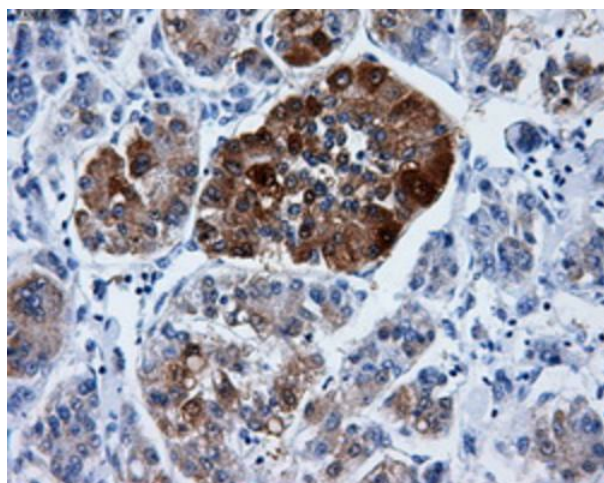


[View online »](#)

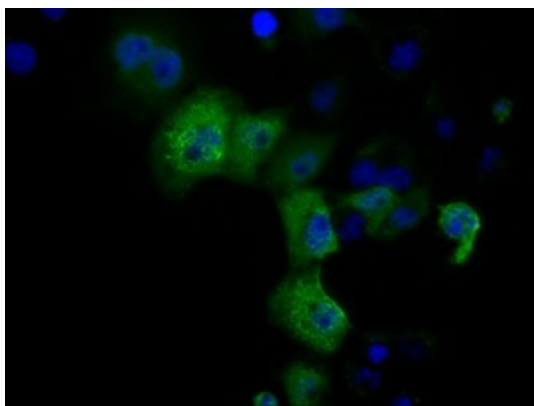
Synonyms: DCR; HCR2; HCR2I; KIDCR; P34H; PNTSU; SDR20C1; XR
Protein Families: Druggable Genome
Protein Pathways: Metabolic pathways, Pentose and glucuronate interconversions

Product images:

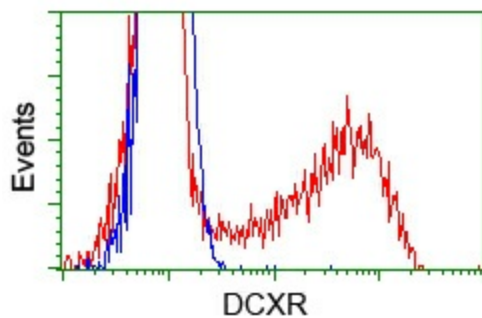
HEK293T cells were transfected with the pCMV6-ENTRY control (Cat# [PS100001], Left lane) or pCMV6-ENTRY DCXR (Cat# [RC200023], Right lane) cDNA for 48 hrs and lysed. Equivalent amounts of cell lysates (5 ug per lane) were separated by SDS-PAGE and immunoblotted with anti-DCXR antibody (Cat# [TA500820]). Positive lysates [LY402535] (100ug) and [LC402535] (20ug) can be purchased separately from OriGene.



Immunohistochemical staining of paraffin-embedded Carcinoma of liver tissue using anti-DCXR mouse monoclonal antibody. (Heat-induced epitope retrieval by 10mM citric buffer, pH6.0, 100°C for 10min, [TA500820], Dilution 1:50)



Anti-DCXR mouse monoclonal antibody ([TA500820]) immunofluorescent staining of COS7 cells transiently transfected by pCMV6-ENTRY DCXR ([RC200023]).



HEK293T cells transfected with either pCMV6-ENTRY DCXR ([RC200023]) (Red) or empty vector control plasmid (Blue) were immunostained with anti-DCXR mouse monoclonal ([TA500820]), and then analyzed by flow cytometry.