

## Product datasheet for **CF500812**

### **RPA34 (RPA2) Mouse Monoclonal Antibody [Clone ID: OTI7F4]**

#### **Product data:**

<b>Product Type:</b>	Primary Antibodies
<b>Clone Name:</b>	OTI7F4
<b>Applications:</b>	IHC, WB
<b>Recommended Dilution:</b>	WB 1:2000, IHC 1:50
<b>Reactivity:</b>	Human, Mouse, Rat
<b>Host:</b>	Mouse
<b>Isotype:</b>	IgG1
<b>Clonality:</b>	Monoclonal
<b>Immunogen:</b>	Full length human recombinant protein of human RPA2 (NP_002937) produced in HEK293T cell.
<b>Formulation:</b>	Lyophilized powder (original buffer 1X PBS, pH 7.3, 8% trehalose)
<b>Reconstitution Method:</b>	For reconstitution, we recommend adding 100uL distilled water to a final antibody concentration of about 1 mg/mL. To use this carrier-free antibody for conjugation experiment, we strongly recommend performing another round of desalting process. (OriGene recommends Zeba Spin Desalting Columns, 7KMWCO from Thermo Scientific)
<b>Purification:</b>	Purified from mouse ascites fluids or tissue culture supernatant by affinity chromatography (protein A/G)
<b>Conjugation:</b>	Unconjugated
<b>Storage:</b>	Store at -20°C as received.
<b>Stability:</b>	Stable for 12 months from date of receipt.
<b>Predicted Protein Size:</b>	29.2 kDa
<b>Gene Name:</b>	replication protein A2
<b>Database Link:</b>	<a href="#">NP_002937</a> <a href="#">Entrez Gene 19891 Mouse</a> <a href="#">Entrez Gene 59102 Rat</a> <a href="#">Entrez Gene 6118 Human</a> <a href="#">P15927</a>
<b>Background:</b>	Required for DNA recombination, repair and replication. The activity of RP-A is mediated by single-stranded DNA binding and protein interactions



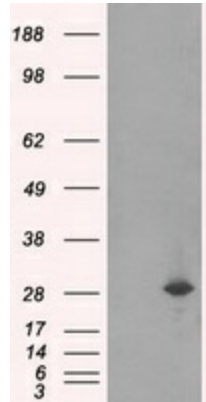
[View online »](#)

**Synonyms:** REPA2; RP-A p32; RP-A p34; RPA32

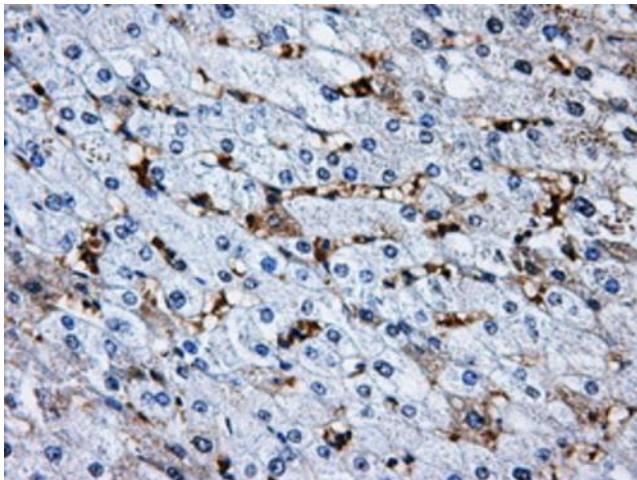
**Protein Families:** Druggable Genome, Stem cell - Pluripotency

**Protein Pathways:** DNA replication, Homologous recombination, Mismatch repair, Nucleotide excision repair

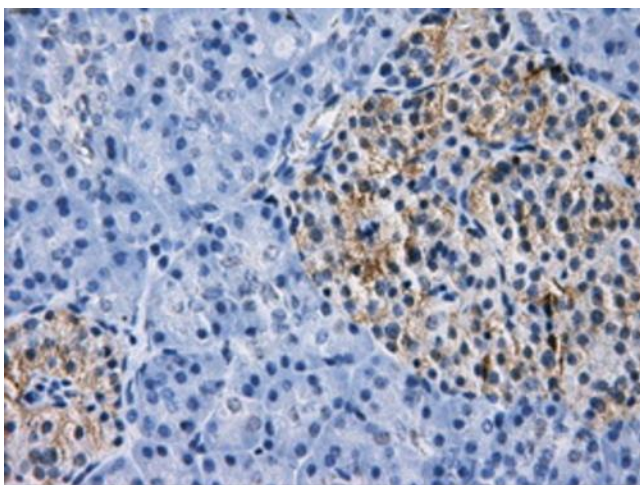
**Product images:**



HEK293T cells were transfected with the pCMV6-ENTRY control (Left lane) or pCMV6-ENTRY RPA2 ([RC205715], Right lane) cDNA for 48 hrs and lysed. Equivalent amounts of cell lysates (5 ug per lane) were separated by SDS-PAGE and immunoblotted with anti-RPA2. Positive lysates [LY401031] (100ug) and [LC401031] (20ug) can be purchased separately from OriGene.



Immunohistochemical staining of paraffin-embedded liver tissue within the normal limits using anti-RPA2 mouse monoclonal antibody. (Heat-induced epitope retrieval by 10mM citric buffer, pH6.0, 100°C for 10min, [TA500812], Dilution 1:50)



Immunohistochemical staining of paraffin-embedded pancreas tissue within the normal limits using anti-RPA2 mouse monoclonal antibody. (Heat-induced epitope retrieval by 10mM citric buffer, pH6.0, 100°C for 10min, [TA500812], Dilution 1:50)