

Product datasheet for **CF500775**

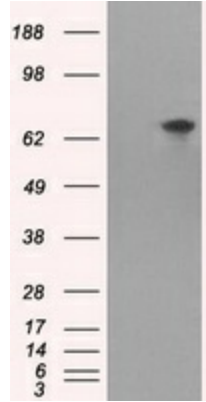
TTL12 Mouse Monoclonal Antibody [Clone ID: OTI13H9]

Product data:

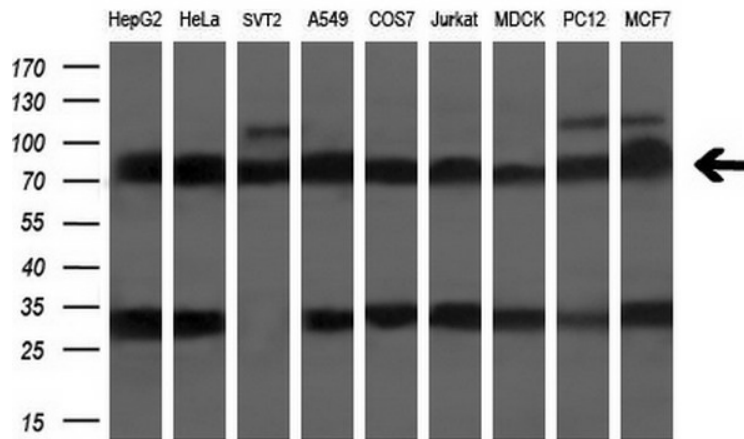
Product Type:	Primary Antibodies
Clone Name:	OTI13H9
Applications:	FC, IF, WB
Recommended Dilution:	IHC 1:100~200, WB: 1:200
Reactivity:	Human, Mouse, Rat
Host:	Mouse
Isotype:	IgG1
Clonality:	Monoclonal
Immunogen:	Full length human recombinant protein of human TTL12 (NP_055955) produced in HEK293T cell.
Formulation:	Lyophilized powder (original buffer 1X PBS, pH 7.3, 8% trehalose)
Reconstitution Method:	For reconstitution, we recommend adding 100uL distilled water to a final antibody concentration of about 1 mg/mL. To use this carrier-free antibody for conjugation experiment, we strongly recommend performing another round of desalting process. (OriGene recommends Zeba Spin Desalting Columns, 7KMWCO from Thermo Scientific)
Purification:	Purified from mouse ascites fluids or tissue culture supernatant by affinity chromatography (protein A/G)
Conjugation:	Unconjugated
Storage:	Store at -20°C as received.
Stability:	Stable for 12 months from date of receipt.
Predicted Protein Size:	74.4 kDa
Gene Name:	tubulin tyrosine ligase like 12
Database Link:	NP_055955 Entrez Gene 300105 Rat Entrez Gene 23170 Human Q14166
Synonyms:	dj526l14.2



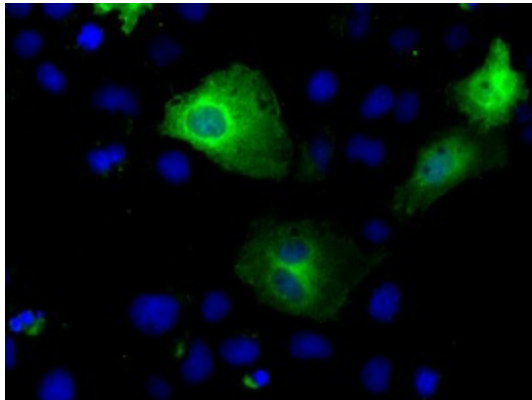
[View online »](#)

Product images:


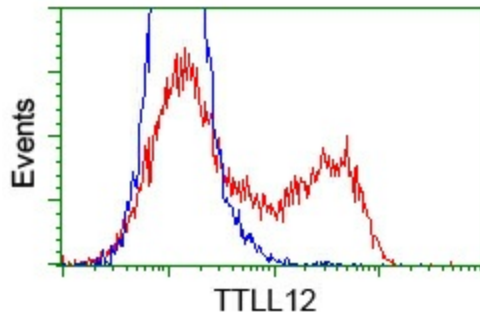
HEK293T cells were transfected with the pCMV6-ENTRY control (Left lane) or pCMV6-ENTRY TLL12 ([RC200841], Right lane) cDNA for 48 hrs and lysed. Equivalent amounts of cell lysates (5 ug per lane) were separated by SDS-PAGE and immunoblotted with anti-TLL12. Positive lysates [LY402417] (100ug) and [LC402417] (20ug) can be purchased separately from OriGene.



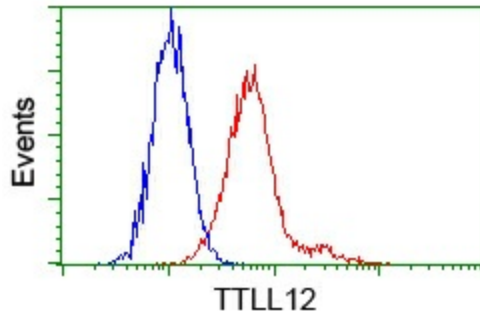
Western blot analysis of extracts (35ug) from 9 different cell lines by using anti-TLL12 monoclonal antibody (HepG2: human; HeLa: human; SVT2: mouse; A549: human; COS7: monkey; Jurkat: human; MDCK: canine; PC12: rat; MCF7: human) (1:200).



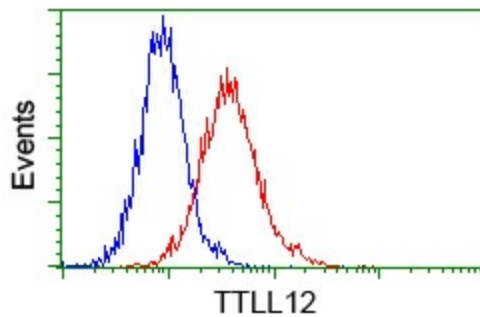
Anti-TLL12 mouse monoclonal antibody ([TA500775]) immunofluorescent staining of COS7 cells transiently transfected by pCMV6-ENTRY TLL12 ([RC200841]).



HEK293T cells transfected with either pCMV6-ENTRY TTLL12 ([RC200841]) (Red) or empty vector control plasmid (Blue) were immunostained with anti-TTLL12 mouse monoclonal ([TA500775], Dilution 1:1,000), and then analyzed by flow cytometry.



Flow cytometric analysis of HeLa cells, using anti-TTLL12 antibody ([TA500775]), (Red) compared to a nonspecific negative control antibody (TA50011) (Blue).



Flow cytometric analysis of Jurkat cells, using anti-TTLL12 antibody ([TA500775]), (Red) compared to a nonspecific negative control antibody (TA50011) (Blue).