

## Product datasheet for **CF500766**

### **RPA34 (RPA2) Mouse Monoclonal Antibody [Clone ID: OTI4C3]**

#### **Product data:**

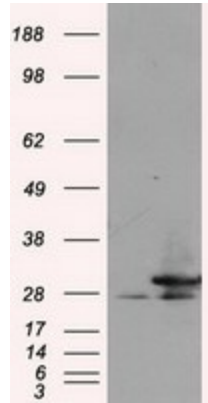
<b>Product Type:</b>	Primary Antibodies
<b>Clone Name:</b>	OTI4C3
<b>Applications:</b>	IF, IP, WB
<b>Recommended Dilution:</b>	WB 1:2000, IF 1:100, IP 2ug/500ul
<b>Reactivity:</b>	Human, Mouse, Rat
<b>Host:</b>	Mouse
<b>Isotype:</b>	IgG1
<b>Clonality:</b>	Monoclonal
<b>Immunogen:</b>	Full length human recombinant protein of human RPA2 (NP_002937) produced in HEK293T cell.
<b>Formulation:</b>	Lyophilized powder (original buffer 1X PBS, pH 7.3, 8% trehalose)
<b>Reconstitution Method:</b>	For reconstitution, we recommend adding 100uL distilled water to a final antibody concentration of about 1 mg/mL. To use this carrier-free antibody for conjugation experiment, we strongly recommend performing another round of desalting process. (OriGene recommends Zeba Spin Desalting Columns, 7KMWCO from Thermo Scientific)
<b>Purification:</b>	Purified from mouse ascites fluids or tissue culture supernatant by affinity chromatography (protein A/G)
<b>Conjugation:</b>	Unconjugated
<b>Storage:</b>	Store at -20°C as received.
<b>Stability:</b>	Stable for 12 months from date of receipt.
<b>Predicted Protein Size:</b>	29.1 kDa
<b>Gene Name:</b>	replication protein A2
<b>Database Link:</b>	<a href="#">NP_002937</a> <a href="#">Entrez Gene 19891 Mouse</a> <a href="#">Entrez Gene 59102 Rat</a> <a href="#">Entrez Gene 6118 Human</a> <a href="#">P15927</a>
<b>Synonyms:</b>	REPA2; RP-A p32; RP-A p34; RPA32
<b>Protein Families:</b>	Druggable Genome, Stem cell - Pluripotency



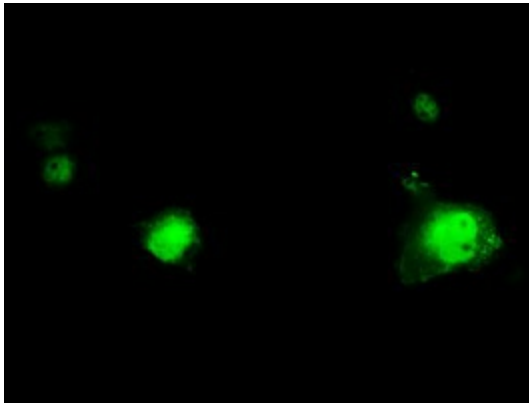
[View online »](#)

**Protein Pathways:** DNA replication, Homologous recombination, Mismatch repair, Nucleotide excision repair

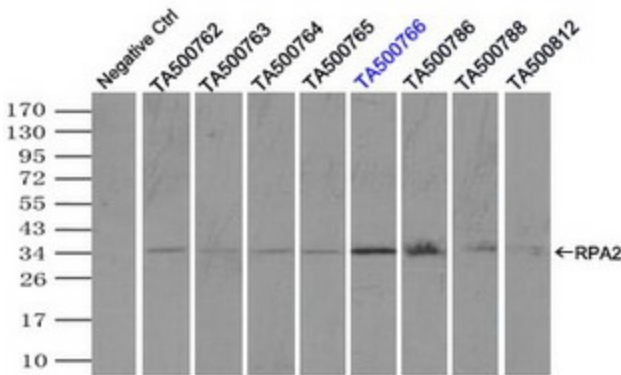
**Product images:**



HEK293T cells were transfected with the pCMV6-ENTRY control (Left lane) or pCMV6-ENTRY RPA2 ([RC205715], Right lane) cDNA for 48 hrs and lysed. Equivalent amounts of cell lysates (5 ug per lane) were separated by SDS-PAGE and immunoblotted with anti-RPA2. Positive lysates [LY401031] (100ug) and [LC401031] (20ug) can be purchased separately from OriGene.



Anti-RPA2 mouse monoclonal antibody ([TA500766]) immunofluorescent staining of COS7 cells transiently transfected by pCMV6-ENTRY RPA2 ([RC205715]).



Immunoprecipitation (IP) of RPA2 by using TrueMab monoclonal anti-RPA2 antibodies (Negative control: IP without adding anti-RPA2 antibody.). For each experiment, 500ul of DDK tagged RPA2 overexpression lysates (at 1:5 dilution with HEK293T lysate), 2ug of anti-RPA2 antibody and 20ul (0.1mg) of goat anti-mouse conjugated magnetic beads were mixed and incubated overnight. After extensive wash to remove any non-specific binding, the immunoprecipitated products were analyzed with rabbit anti-DDK polyclonal antibody.