

## Product datasheet for **CF500748**

### Sorbitol Dehydrogenase (SORD) Mouse Monoclonal Antibody [Clone ID: OTI17E7]

#### Product data:

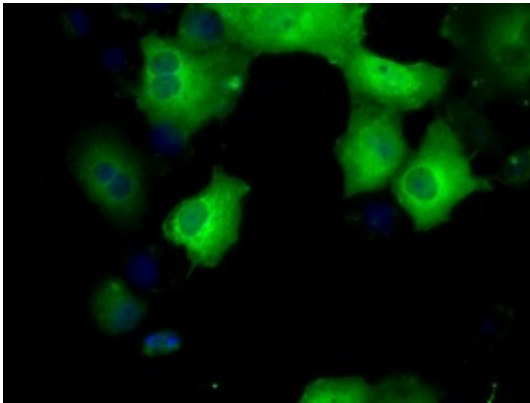
Product Type:	Primary Antibodies
Clone Name:	OTI17E7
Applications:	FC, IF
Recommended Dilution:	IF 1:100, Flow 1:100
Reactivity:	Human
Host:	Mouse
Isotype:	IgG1
Clonality:	Monoclonal
Immunogen:	Full length human recombinant protein of human SORD (NP_003095) produced in HEK293T cell.
Formulation:	Lyophilized powder (original buffer 1X PBS, pH 7.3, 8% trehalose)
Reconstitution Method:	For reconstitution, we recommend adding 100uL distilled water to a final antibody concentration of about 1 mg/mL. To use this carrier-free antibody for conjugation experiment, we strongly recommend performing another round of desalting process. (OriGene recommends Zeba Spin Desalting Columns, 7KMWCO from Thermo Scientific)
Purification:	Purified from mouse ascites fluids or tissue culture supernatant by affinity chromatography (protein A/G)
Conjugation:	Unconjugated
Storage:	Store at -20°C as received.
Stability:	Stable for 12 months from date of receipt.
Predicted Protein Size:	38.3 kDa
Gene Name:	sorbitol dehydrogenase
Database Link:	<a href="#">NP_003095</a> <a href="#">Entrez Gene 6652 Human Q00796</a>
Synonyms:	HEL-S-95n; SORD1
Protein Families:	Druggable Genome



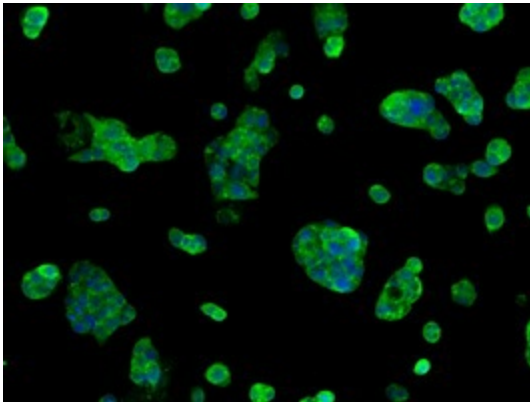
[View online »](#)

Protein Pathways: Fructose and mannose metabolism, Metabolic pathways

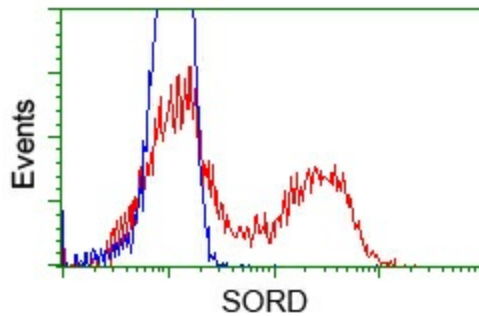
### Product images:



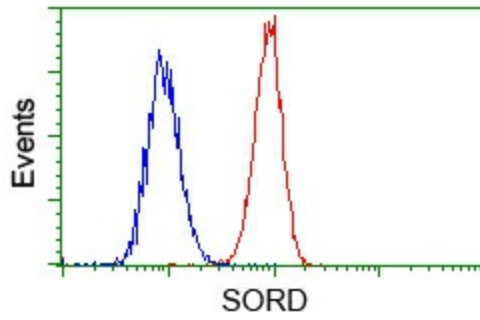
Anti-SORD mouse monoclonal antibody ([TA500748]) immunofluorescent staining of COS7 cells transiently transfected by pCMV6-ENTRY SORD ([RC200415]).



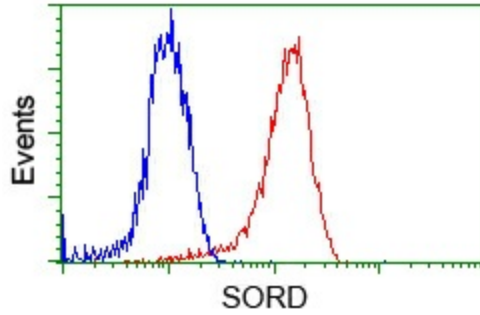
Immunofluorescent staining of HepG2 cells using anti-SORD mouse monoclonal antibody ([TA500748]).



HEK293T cells transfected with either pCMV6-ENTRY SORD ([RC200415]) (Red) or empty vector control plasmid (Blue) were immunostained with anti-SORD mouse monoclonal ([TA500748]), and then analyzed by flow cytometry.



Flow cytometric analysis of HeLa cells, using anti-SORD antibody ([TA500748]), (Red) compared to a nonspecific negative control antibody (TA50011) (Blue).



Flow cytometric analysis of Jurkat cells, using anti-SORD antibody ([TA500748]), (Red) compared to a nonspecific negative control antibody (TA50011) (Blue).