

## Product datasheet for **CF500733**

### CD26 (DPP4) Mouse Monoclonal Antibody [Clone ID: OTI11D7]

#### Product data:

|                         |  |
|-------------------------|--|
| Product Type:           | Primary Antibodies   |
| Clone Name:             | OTI11D7  |
| Applications:           | FC, IF, IHC, WB  |
| Recommended Dilution:   | WB 1:500, IHC 1:50, IF 1:100, Flow 1:100   |
| Reactivity:             | Human  |
| Host:                   | Mouse  |
| Isotype:                | IgG1   |
| Clonality:              | Monoclonal   |
| Immunogen:              | Full length human recombinant protein of human DPP4 (NP_001926) produced in HEK293T cell.  |
| Formulation:            | Lyophilized powder (original buffer 1X PBS, pH 7.3, 8% trehalose)  |
| Reconstitution Method:  | For reconstitution, we recommend adding 100uL distilled water to a final antibody concentration of about 1 mg/mL. To use this carrier-free antibody for conjugation experiment, we strongly recommend performing another round of desalting process. (OriGene recommends Zeba Spin Desalting Columns, 7KMWCO from Thermo Scientific) |
| Purification:           | Purified from mouse ascites fluids or tissue culture supernatant by affinity chromatography (protein A/G)  |
| Conjugation:            | Unconjugated   |
| Storage:                | Store at -20°C as received.  |
| Stability:              | Stable for 12 months from date of receipt.   |
| Predicted Protein Size: | 88.3 kDa   |
| Gene Name:              | dipeptidyl peptidase 4   |
| Database Link:          | <a href="#">NP_001926</a><br><a href="#">Entrez Gene 1803 Human P27487</a>   |
| Background:             | The protein encoded by this gene is identical to adenosine deaminase complexing protein-2, and to the T-cell activation antigen CD26. It is an intrinsic membrane glycoprotein and a serine exopeptidase that cleaves X-proline dipeptides from the N-terminus of polypeptides.  |



[View online »](#)

**Synonyms:** ADABP; ADCP2; CD26; DPPIV; TP103

**Protein Families:** Druggable Genome, Protease, Secreted Protein, Transmembrane

**Product images:**

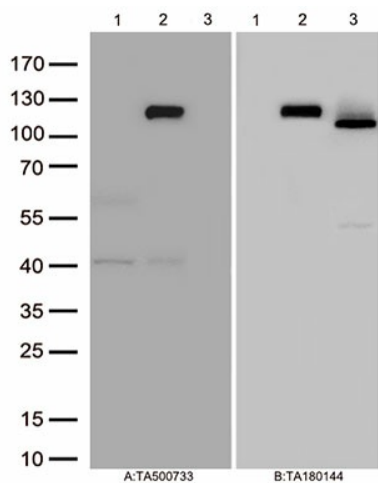
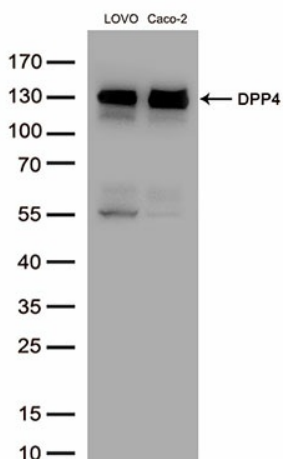


Figure A, Western blot analysis of overexpressed lysates(25ug per lane) from HEK293T cells transfected with empty plasmid ([PS100001], lane 1) , human DPP4 plasmid ([RC209466], lane 2), mouse DPP4 plasmid ([MR222698], lane 3) using anti-DPP4 antibody [TA500733] (1:500). Figure B, Western blot analysis of the same samples as figure A with anti-DDK antibody ([TA180144], 1:1000)



Western blot analysis of extracts (50ug per lane) from 2 cell lines lysates by using anti-DPP4 monoclonal antibody([TA500733], 1:500)

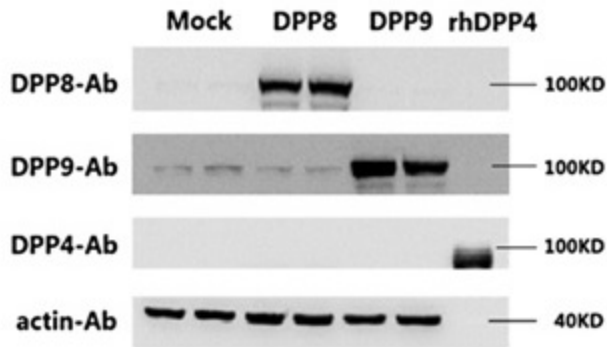


Figure from citation: Western blot analysis of protein levels of DPP4/8/9 in 293E cells transfected with pcDNA3.1 (Mock), pcDNA3.1-hDPP8 (DPP8) and pcDNA3.1-hDPP9 (DPP9), the purified recombinant human DPP4 protein (rhDPP4) was used as a positive control for the DPP4 antibody, antibodies targeting human DPP4/8/9 ([TA500733]/[TA504366]/[TA504040]) and  $\beta$ -actin ([TA310155]) were purchased from OriGene. [View Citation](#)

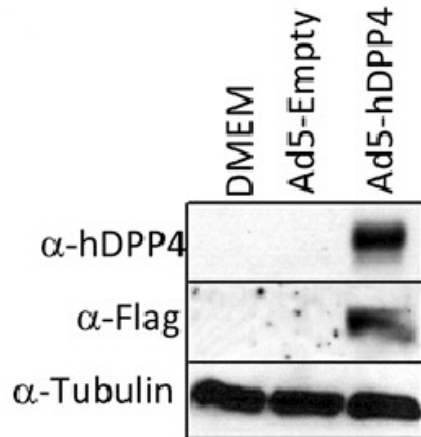
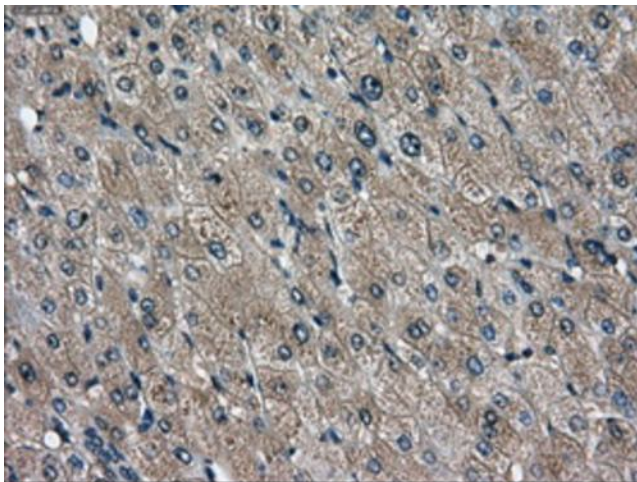


Figure from citation: Western Blot of DPP4 protein level by using anti-DPP4 antibody in mouse MLE15 cells. [View Citation](#)



Immunohistochemical staining of paraffin-embedded liver tissue within the normal limits using anti-DPP4 mouse monoclonal antibody. Heat-induced epitope retrieval by EDTA solution buffer pH 8.0 at 120°C for 3 min.

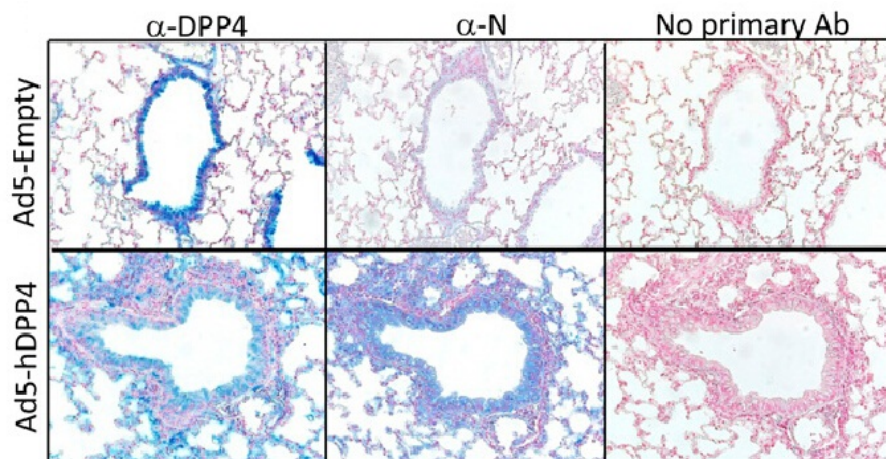
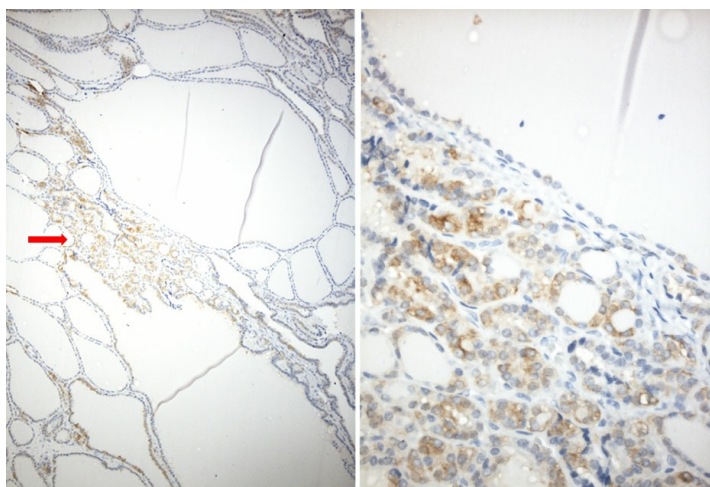
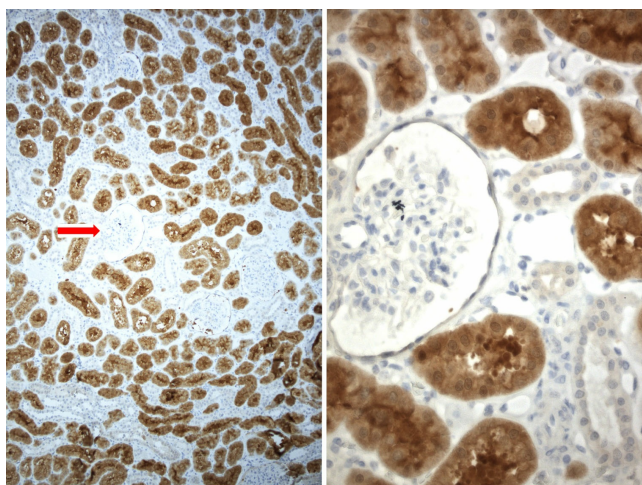


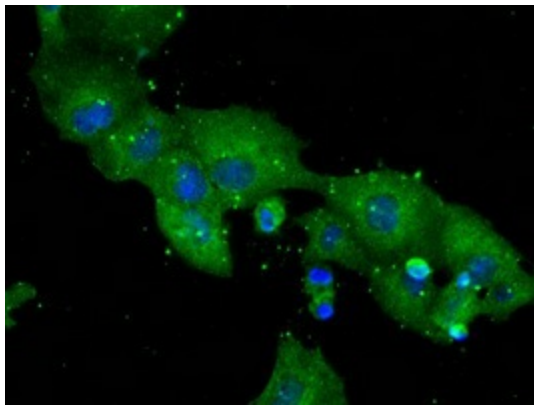
Figure from citation: Immunohistochemistry of DPP4 protein level by using anti-DPP4 antibody in lungs harvested from BALB/c mice at day 3. Dilution: 1:800 [View Citation](#). Heat-induced epitope retrieval by EDTA solution buffer pH 8.0 at 120°C for 3 min.



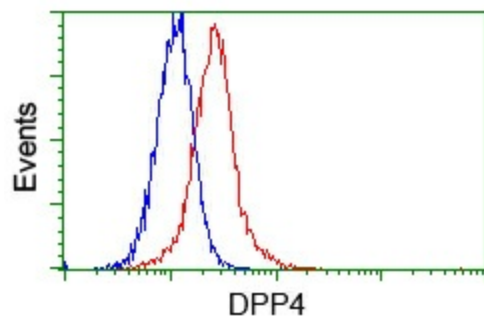
Immunohistochemical staining of paraffin-embedded normal human thyroid tissue using anti-DPP4 C/N [TA500733] clone OTI11D7 mouse monoclonal antibody. HIER Citrate buffer pH6 ([B05-100]) at 110C for 10 min, anti-DPP4 diluted to 1:200. Detection was done with Polink1 Broad Mouse and Rabbit C/N [D11-18] with DAB Kit. Image on left is at 10x magnification and image on the right is at 40x magnification of area indicated by red arrow on 10x.



Immunohistochemical staining of paraffin-embedded normal human kidney tissue using anti-DPP4 C/N [TA500733] clone OTI11D7 mouse monoclonal antibody. HIER Citrate buffer pH6 ([B05-100]) at 110C for 10 min, anti-DPP4 diluted to 1:100. Detection was done with Polink1 Broad Mouse and Rabbit C/N [D11-18] with DAB Kit. Image on left is at 10x magnification and image on the right is at 40x magnification of area indicated by red arrow on 10x.



Anti-DPP4 mouse monoclonal antibody (TA500733) immunofluorescent staining of COS7 cells transiently transfected by pCMV6-ENTRY DPP4 (RC209466).



Flow cytometric analysis of HeLa cells, using anti-DPP4 antibody (TA500733), (Red) compared to a nonspecific negative control antibody (TA50011) (Blue).