

Product datasheet for **CF500730**

BTN3A2 Mouse Monoclonal Antibody [Clone ID: OTI1A6]

Product data:

Product Type:	Primary Antibodies
Clone Name:	OTI1A6
Applications:	IF, IHC, WB
Recommended Dilution:	WB 1:2000, IHC 1:50, IF 1:100
Reactivity:	Human
Host:	Mouse
Isotype:	IgG1
Clonality:	Monoclonal
Immunogen:	Full length human recombinant protein of human BTN3A2 (NP_008978) produced in HEK293T cell.
Formulation:	Lyophilized powder (original buffer 1X PBS, pH 7.3, 8% trehalose)
Reconstitution Method:	For reconstitution, we recommend adding 100uL distilled water to a final antibody concentration of about 1 mg/mL. To use this carrier-free antibody for conjugation experiment, we strongly recommend performing another round of desalting process. (OriGene recommends Zeba Spin Desalting Columns, 7KMWCO from Thermo Scientific)
Purification:	Purified from mouse ascites fluids or tissue culture supernatant by affinity chromatography (protein A/G)
Conjugation:	Unconjugated
Storage:	Store at -20°C as received.
Stability:	Stable for 12 months from date of receipt.
Predicted Protein Size:	36.4 kDa
Gene Name:	butyrophilin subfamily 3 member A2
Database Link:	NP_008978 Entrez Gene 11118 Human P78410



[View online »](#)

Background:

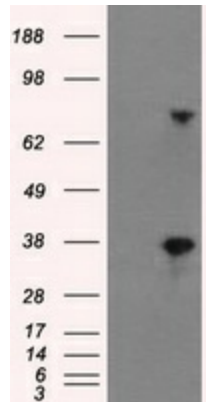
This gene encodes a member of the immunoglobulin superfamily, containing two Ig domains with similarity to Ig variable and Ig constant domains. The gene resides in the juxta-telomeric region of the major histocompatibility class 1 locus on chromosome 6 in the seven member BTN cluster, which includes butyrophilin, and three members each of the BTN2 and BTN3 subfamilies. Alternatively spliced transcript variants have been described but their full-length nature has yet to be determined.

Synonyms:

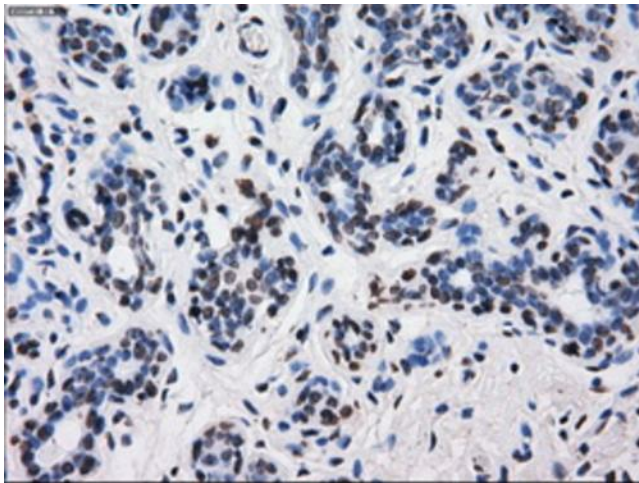
BT3.2; BTF4; BTN3.2; CD277

Protein Families:

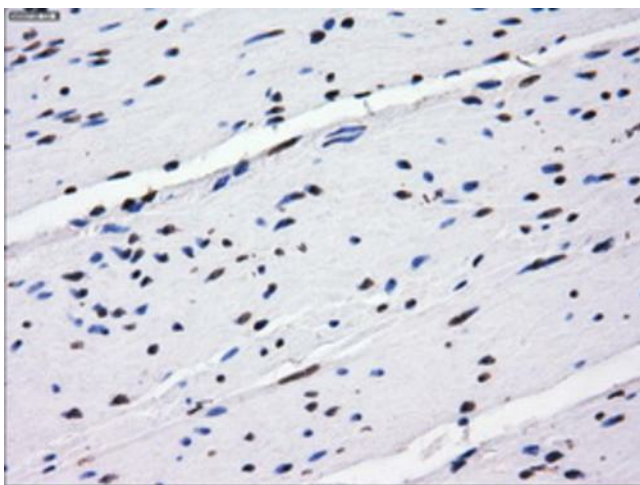
Druggable Genome, Transmembrane

Product images:

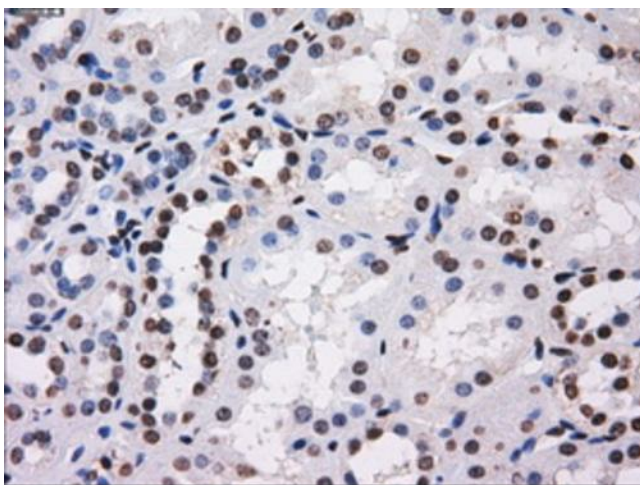
HEK293T cells were transfected with the pCMV6-ENTRY control (Cat# [PS100001], Left lane) or pCMV6-ENTRY BTN3A2 (Cat# [RC201183], Right lane) cDNA for 48 hrs and lysed. Equivalent amounts of cell lysates (5 ug per lane) were separated by SDS-PAGE and immunoblotted with anti-BTN3A2 (Cat# [TA500730]). Positive lysates [LY402082] (100ug) and [LC402082] (20ug) can be purchased separately from OriGene.



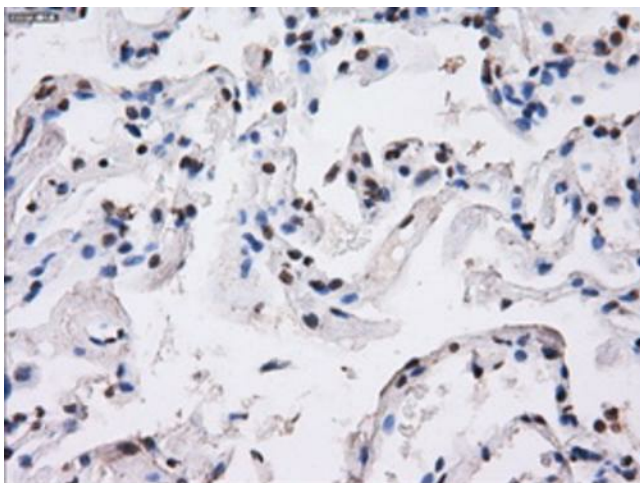
Immunohistochemical staining of paraffin-embedded breast tissue within the normal limits using anti-BTN3A2 mouse monoclonal antibody. (Heat-induced epitope retrieval by 10mM citric buffer, pH6.0, 100°C for 10min, [TA500730], Dilution 1:50)



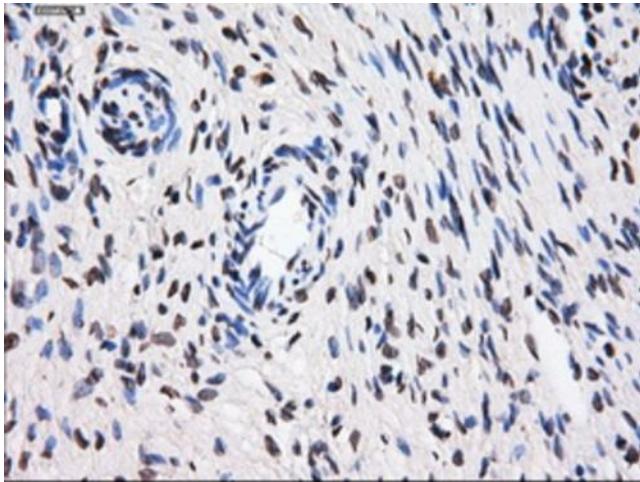
Immunohistochemical staining of paraffin-embedded colon tissue within the normal limits using anti-BTN3A2 mouse monoclonal antibody. (Heat-induced epitope retrieval by 10mM citric buffer, pH6.0, 100°C for 10min, [TA500730], Dilution 1:50)



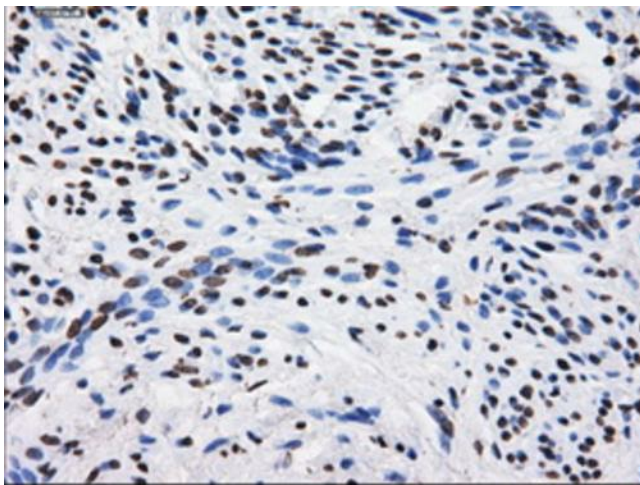
Immunohistochemical staining of paraffin-embedded Kidney tissue within the normal limits using anti-BTN3A2 mouse monoclonal antibody. (Heat-induced epitope retrieval by 10mM citric buffer, pH6.0, 100°C for 10min, [TA500730], Dilution 1:50)



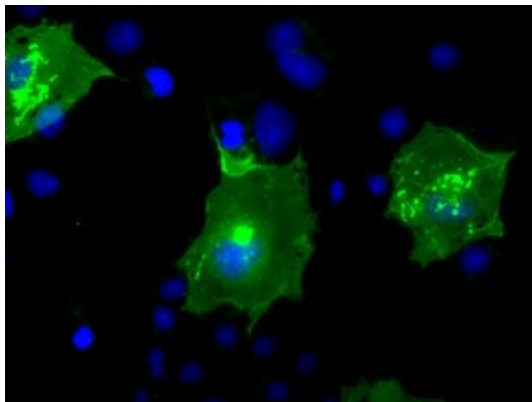
Immunohistochemical staining of paraffin-embedded lung tissue within the normal limits using anti-BTN3A2 mouse monoclonal antibody. (Heat-induced epitope retrieval by 10mM citric buffer, pH6.0, 100°C for 10min, [TA500730], Dilution 1:50)



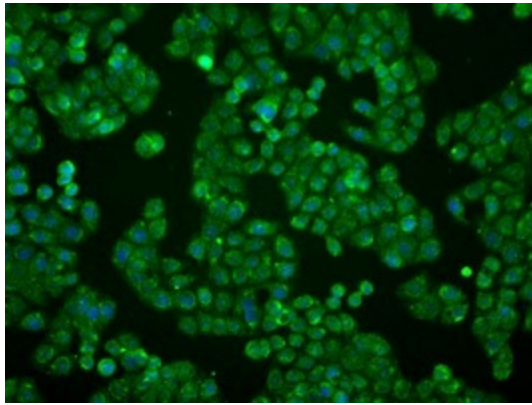
Immunohistochemical staining of paraffin-embedded Ovary tissue within the normal limits using anti-BTN3A2 mouse monoclonal antibody. (Heat-induced epitope retrieval by 10mM citric buffer, pH6.0, 100°C for 10min, [TA500730], Dilution 1:50)



Immunohistochemical staining of paraffin-embedded endometrium tissue within the normal limits using anti-BTN3A2 mouse monoclonal antibody. (Heat-induced epitope retrieval by 10mM citric buffer, pH6.0, 100°C for 10min, [TA500730], Dilution 1:50)



Anti-BTN3A2 mouse monoclonal antibody ([TA500730]) immunofluorescent staining of COS7 cells transiently transfected by pCMV6-ENTRY BTN3A2 ([RC201183]).



Immunofluorescent staining of HT29 cells using anti-BTN3A2 mouse monoclonal antibody ([TA500730]).

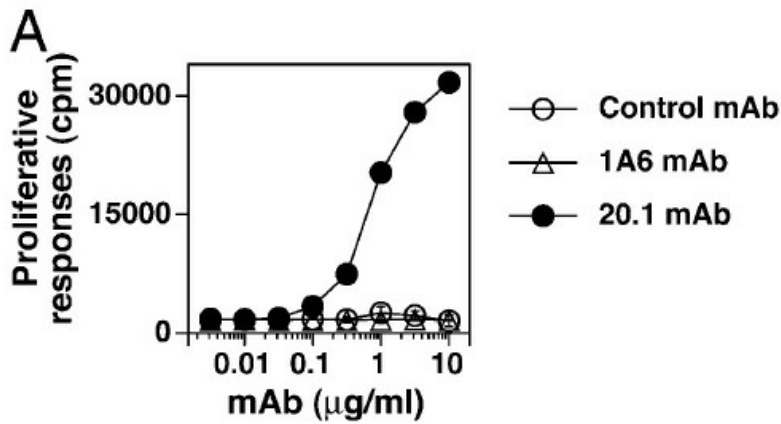


Figure from citation: Vg2Vd2 T cells proliferate in response to the 20.1 but not the 1A6 mAb, although both are specific for BTN3. The 12G12 Vg2Vd2 T cell clone was cultured with control IgG1 mAb, BTN3A2 (1A6) mAb, or 20.1 mAb in the presence of mitomycin C-treated Va2 cells. The cells were pulsed with [3H]thymidine after 24 h and harvested 18 h later. [View Citation](#)