

Product datasheet for **CF500726**

IFIT3 Mouse Monoclonal Antibody [Clone ID: OTI1G1]

Product data:

Product Type:	Primary Antibodies
Clone Name:	OTI1G1
Applications:	FC, IF, WB
Recommended Dilution:	WB 1:2000, IF 1:100, Flow 1:100
Reactivity:	Human
Host:	Mouse
Isotype:	IgG1
Clonality:	Monoclonal
Immunogen:	Full length human recombinant protein of human IFIT3 (NP_001540) produced in HEK293T cell.
Formulation:	Lyophilized powder (original buffer 1X PBS, pH 7.3, 8% trehalose)
Reconstitution Method:	For reconstitution, we recommend adding 100uL distilled water to a final antibody concentration of about 1 mg/mL. To use this carrier-free antibody for conjugation experiment, we strongly recommend performing another round of desalting process. (OriGene recommends Zeba Spin Desalting Columns, 7KMWCO from Thermo Scientific)
Purification:	Purified from mouse ascites fluids or tissue culture supernatant by affinity chromatography (protein A/G)
Conjugation:	Unconjugated
Storage:	Store at -20°C as received.
Stability:	Stable for 12 months from date of receipt.
Predicted Protein Size:	56.0 kDa
Gene Name:	interferon induced protein with tetratricopeptide repeats 3
Database Link:	NP_001540 Entrez Gene 3437 Human Q14879
Synonyms:	CIG-49; cig41; GARG-49; IFI60; IFIT4; IRG2; ISG60; P60; RIG-G



[View online »](#)

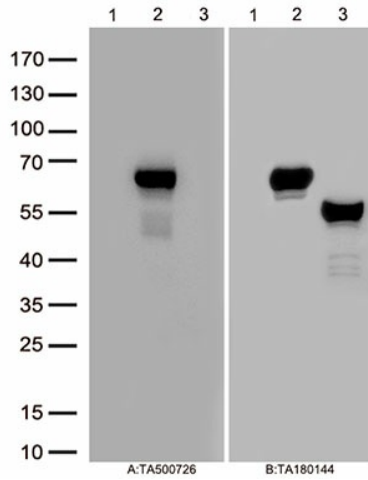
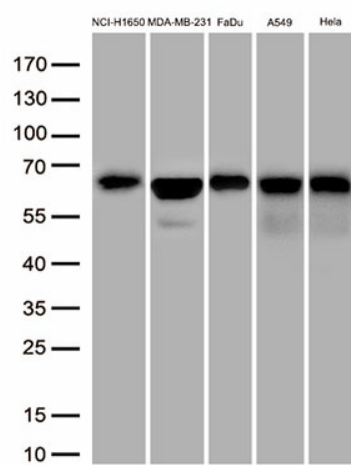
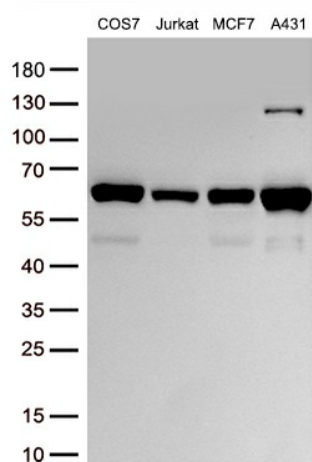
Product images:


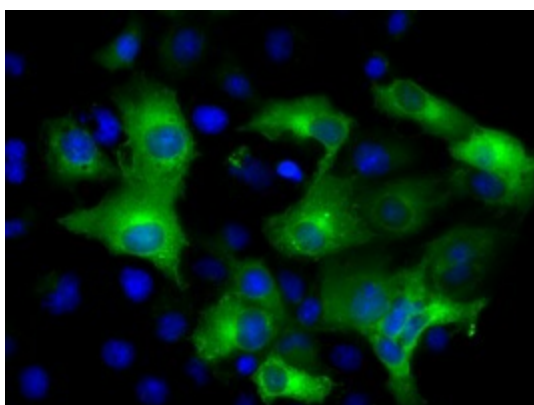
Figure A, Western blot analysis of overexpressed lysates(25ug per lane) from HEK293T cells transfected with empty plasmid ([PS100001], lane 1) , human IFIT3 plasmid ([RC200610], lane 2), mouse IFIT3 plasmid ([MR206340], lane 3) using anti-IFIT3 antibody [TA500726] (1:1000). Figure B, Western blot analysis of the same samples as figure A with anti-DDK antibody ([TA180144], 1:1000)



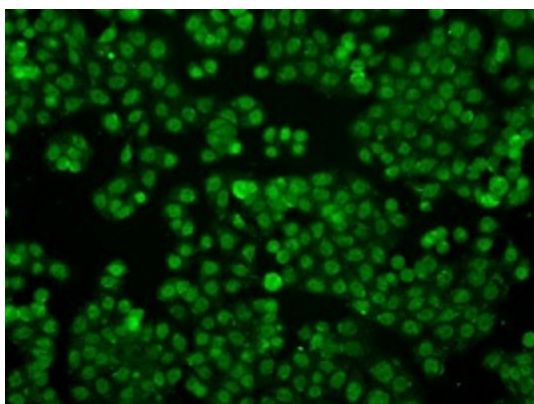
Western blot analysis of extracts (50ug per lane) from 5 cell lines lysates by using anti-IFIT3 monoclonal antibody([TA500726], 1:1000)



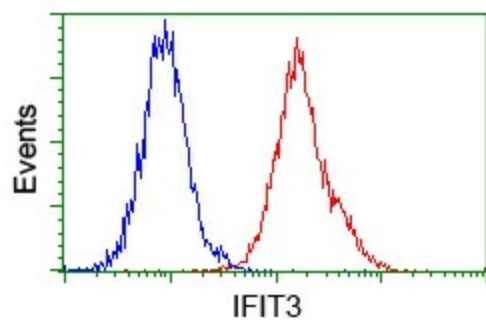
Western blot analysis of extracts (30ug per lane) from 4 cell lines lysates by using anti-IFIT3 monoclonal antibody([TA500726], 1:500)



Anti-IFIT3 mouse monoclonal antibody ([TA500726]) immunofluorescent staining of COS7 cells transiently transfected by pCMV6-ENTRY IFIT3 ([RC200610]).



Immunofluorescent staining of HT29 cells using anti-IFIT3 mouse monoclonal antibody ([TA500726]).



Flow cytometric analysis of Jurkat cells, using anti-IFIT3 antibody ([TA500726]), (Red) compared to a nonspecific negative control antibody (TA50011) (Blue).