

## Product datasheet for **CF500658**

### GBP2 Mouse Monoclonal Antibody [Clone ID: OT11G1]

#### Product data:

Product Type:	Primary Antibodies
Clone Name:	OT11G1
Applications:	FC, IF, IHC, WB
Recommended Dilution:	WB 1:2000, IHC 1:50, IF 1:100, FLOW 1:100
Reactivity:	Human
Host:	Mouse
Isotype:	IgG2b
Clonality:	Monoclonal
Immunogen:	Full length human recombinant protein of human GBP2 (NP_004111) produced in HEK293T cell.
Formulation:	Lyophilized powder (original buffer 1X PBS, pH 7.3, 8% trehalose)
Reconstitution Method:	For reconstitution, we recommend adding 100uL distilled water to a final antibody concentration of about 1 mg/mL. To use this carrier-free antibody for conjugation experiment, we strongly recommend performing another round of desalting process. (OriGene recommends Zeba Spin Desalting Columns, 7KMWCO from Thermo Scientific)
Purification:	Purified from mouse ascites fluids or tissue culture supernatant by affinity chromatography (protein A/G)
Conjugation:	Unconjugated
Storage:	Store at -20°C as received.
Stability:	Stable for 12 months from date of receipt.
Predicted Protein Size:	67 kDa
Gene Name:	guanylate binding protein 2
Database Link:	<a href="#">NP_004111</a> <a href="#">Entrez Gene 2634 Human</a> <a href="#">P32456</a>



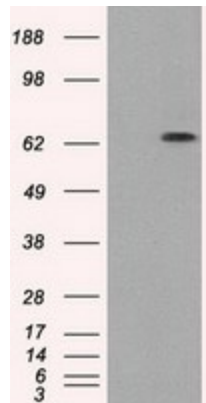
[View online »](#)

**Background:**

Interferons are cytokines that have antiviral effects and inhibit tumor cell proliferation. They induce a large number of genes in their target cells, including those coding for the guanylate-binding proteins (GBPs). GBPs are characterized by their ability to specifically bind guanine nucleotides (GMP, GDP, and GTP). The protein encoded by this gene is a GTPase that converts GTP to GDP and GMP. [provided by RefSeq]

**Synonyms:**

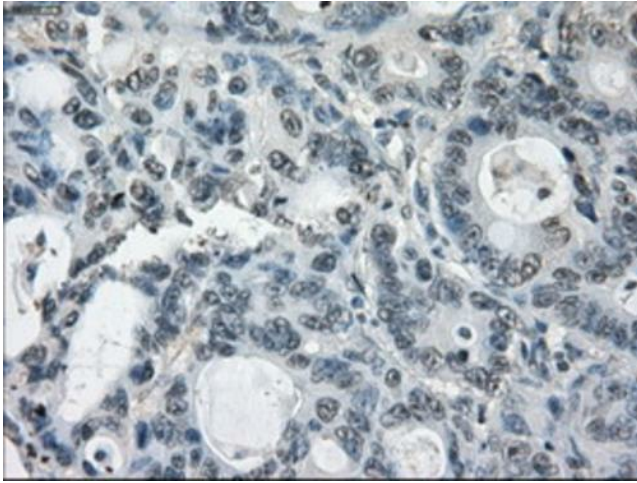
DKFZp451C2311

**Product images:**


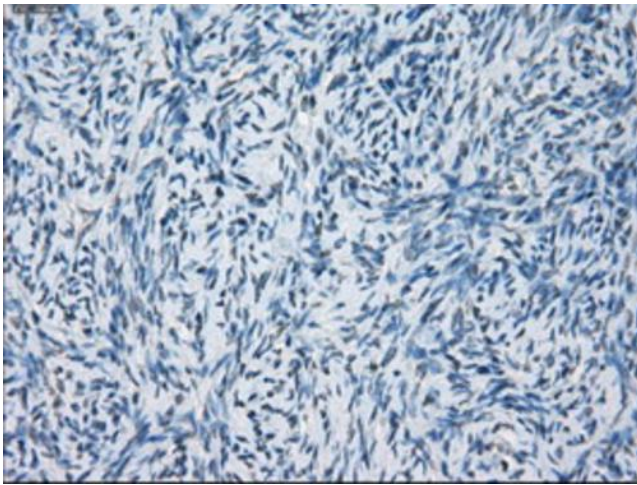
HEK293T cells were transfected with the pCMV6-ENTRY control (Left lane) or pCMV6-ENTRY GBP2 ([RC209939], Right lane) cDNA for 48 hrs and lysed. Equivalent amounts of cell lysates (5 ug per lane) were separated by SDS-PAGE and immunoblotted with anti-GBP2. Positive lysates [LY401329] (100ug) and [LC401329] (20ug) can be purchased separately from OriGene.



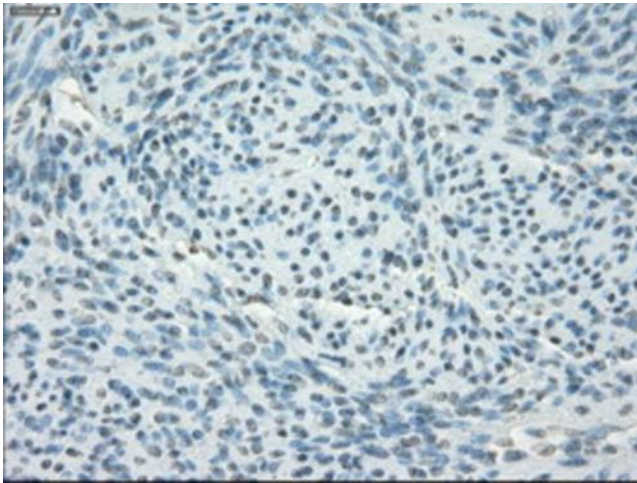
Immunohistochemical staining of paraffin-embedded Human colon tissue within the normal limits using anti-GBP2 mouse monoclonal antibody. (Heat-induced epitope retrieval by 10mM citric buffer, pH6.0, 100°C for 10min, [TA500658])



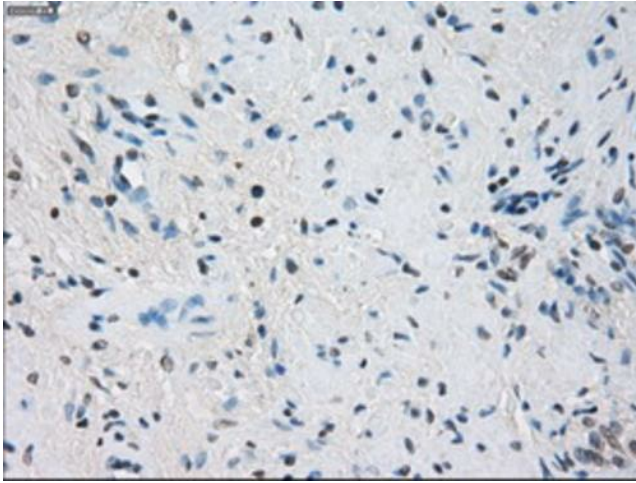
Immunohistochemical staining of paraffin-embedded Adenocarcinoma of Human colon tissue using anti-GBP2 mouse monoclonal antibody. (Heat-induced epitope retrieval by 10mM citric buffer, pH6.0, 100°C for 10min, [TA500658])



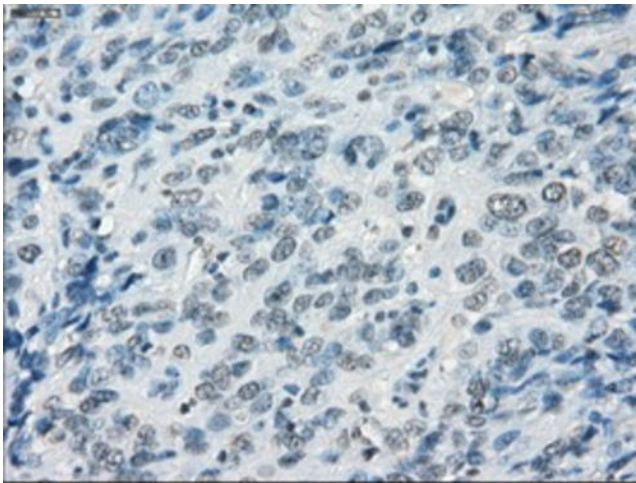
Immunohistochemical staining of paraffin-embedded Human Ovary tissue within the normal limits using anti-GBP2 mouse monoclonal antibody. (Heat-induced epitope retrieval by 10mM citric buffer, pH6.0, 100°C for 10min, [TA500658])



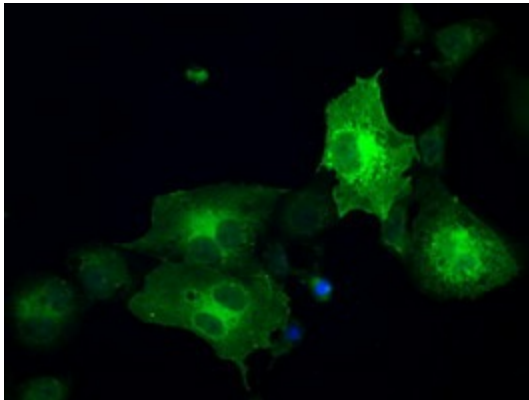
Immunohistochemical staining of paraffin-embedded Human endometrium tissue within the normal limits using anti-GBP2 mouse monoclonal antibody. (Heat-induced epitope retrieval by 10mM citric buffer, pH6.0, 100°C for 10min, [TA500658])



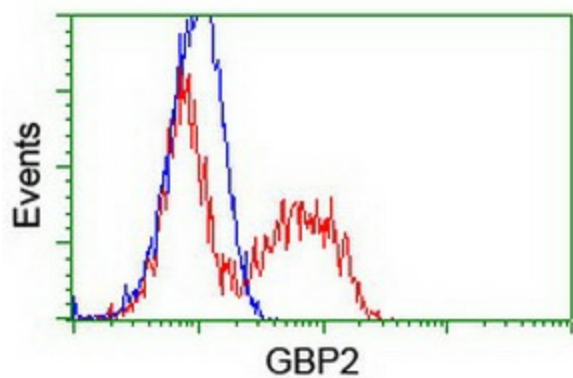
Immunohistochemical staining of paraffin-embedded Human prostate tissue within the normal limits using anti-GBP2 mouse monoclonal antibody. (Heat-induced epitope retrieval by 10mM citric buffer, pH6.0, 100°C for 10min, [TA500658])



Immunohistochemical staining of paraffin-embedded Carcinoma of Human bladder tissue using anti-GBP2 mouse monoclonal antibody. (Heat-induced epitope retrieval by 10mM citric buffer, pH6.0, 100°C for 10min, [TA500658])



Anti-GBP2 mouse monoclonal antibody ([TA500658]) immunofluorescent staining of COS7 cells transiently transfected by pCMV6-ENTRY GBP2 ([RC209939]).



HEK293T cells transfected with either [RC209939] overexpress plasmid (Red) or empty vector control plasmid (Blue) were immunostained by anti-GBP2 antibody ([TA500658]), and then analyzed by flow cytometry.