

Product datasheet for **CF500656**

GBP2 Mouse Monoclonal Antibody [Clone ID: OTI3B8]

Product data:

Product Type:	Primary Antibodies
Clone Name:	OTI3B8
Applications:	IF, IHC, WB
Recommended Dilution:	WB 1:1000, IHC 1:50, IF 1:100
Reactivity:	Human
Host:	Mouse
Isotype:	IgG2b
Clonality:	Monoclonal
Immunogen:	Full-length protein expressed in 293T cell transfected with human GBP2 expression vector
Formulation:	Lyophilized powder (original buffer 1X PBS, pH 7.3, 8% trehalose)
Reconstitution Method:	For reconstitution, we recommend adding 100uL distilled water to a final antibody concentration of about 1 mg/mL. To use this carrier-free antibody for conjugation experiment, we strongly recommend performing another round of desalting process. (OriGene recommends Zeba Spin Desalting Columns, 7KMWCO from Thermo Scientific)
Purification:	Purified from mouse ascites fluids or tissue culture supernatant by affinity chromatography (protein A/G)
Conjugation:	Unconjugated
Storage:	Store at -20°C as received.
Stability:	Stable for 12 months from date of receipt.
Predicted Protein Size:	67.2 kDa
Gene Name:	guanylate binding protein 2
Database Link:	NP_004111 Entrez Gene 2634 Human P32456



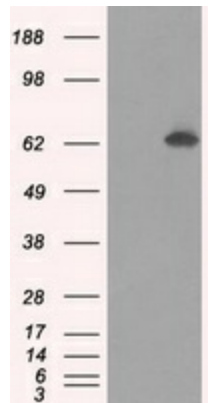
[View online »](#)

Background:

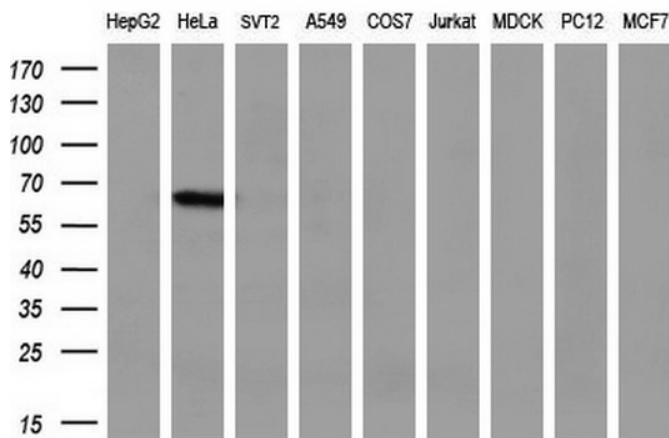
Interferons are cytokines that have antiviral effects and inhibit tumor cell proliferation. They induce a large number of genes in their target cells, including those coding for the guanylate-binding proteins (GBPs). GBPs are characterized by their ability to specifically bind guanine nucleotides (GMP, GDP, and GTP). The protein encoded by this gene is a GTPase that converts GTP to GDP and GMP.

Synonyms:

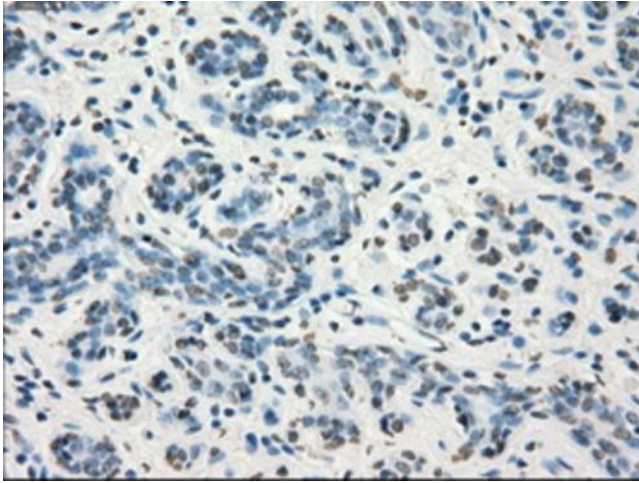
DKFZp451C2311

Product images:


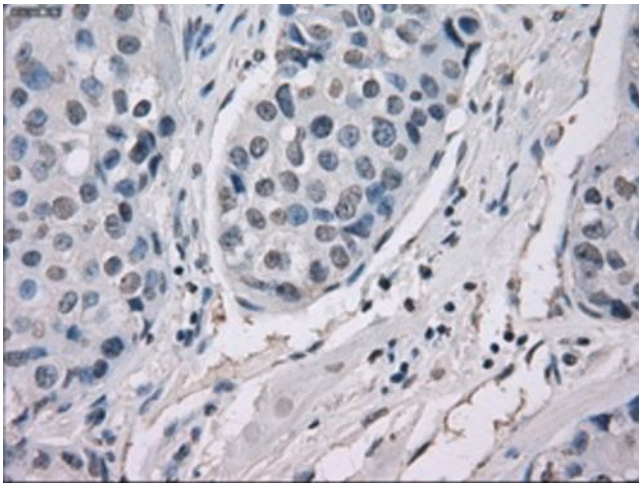
HEK293T cells were transfected with the pCMV6-ENTRY control (Left lane) or pCMV6-ENTRY GBP2 ([RC209939], Right lane) cDNA for 48 hrs and lysed. Equivalent amounts of cell lysates (5 ug per lane) were separated by SDS-PAGE and immunoblotted with anti-GBP2. Positive lysates [LY401329] (100ug) and [LC401329] (20ug) can be purchased separately from OriGene.



Western blot analysis of extracts (35ug) from 9 different cell lines by using anti-GBP2 monoclonal antibody (HepG2: human; HeLa: human; SVT2: mouse; A549: human; COS7: monkey; Jurkat: human; MDCK: canine; PC12: rat; MCF7: human) (1:200).



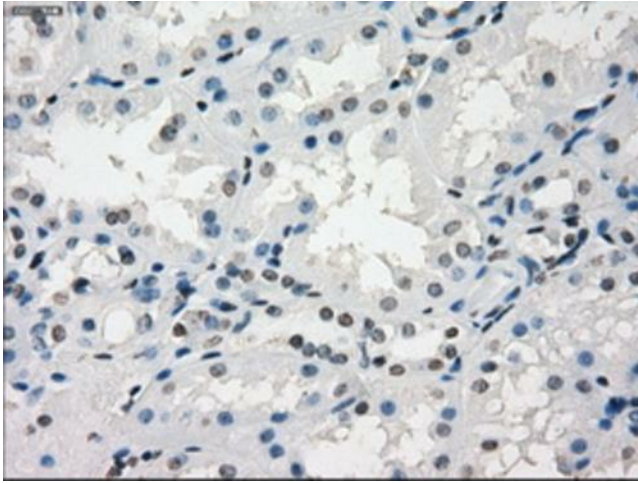
Immunohistochemical staining of paraffin-embedded breast tissue within the normal limits using anti-GBP2 mouse monoclonal antibody. Heat-induced epitope retrieval by EDTA solution buffer pH 8.0 at 120°C for 3 min.



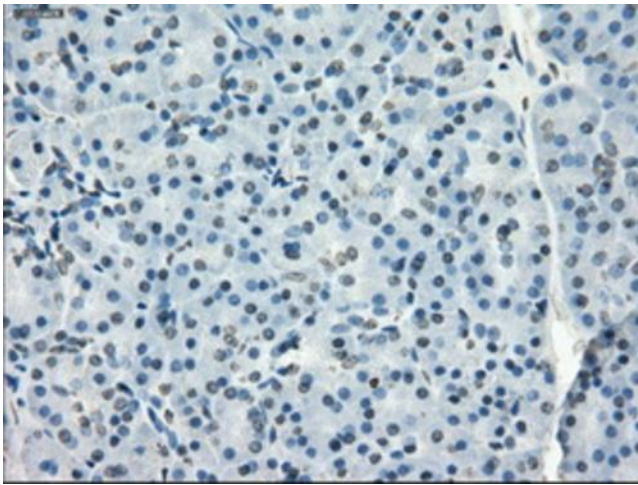
Immunohistochemical staining of paraffin-embedded Adenocarcinoma of breast tissue using anti-GBP2 mouse monoclonal antibody. Heat-induced epitope retrieval by EDTA solution buffer pH 8.0 at 120°C for 3 min.



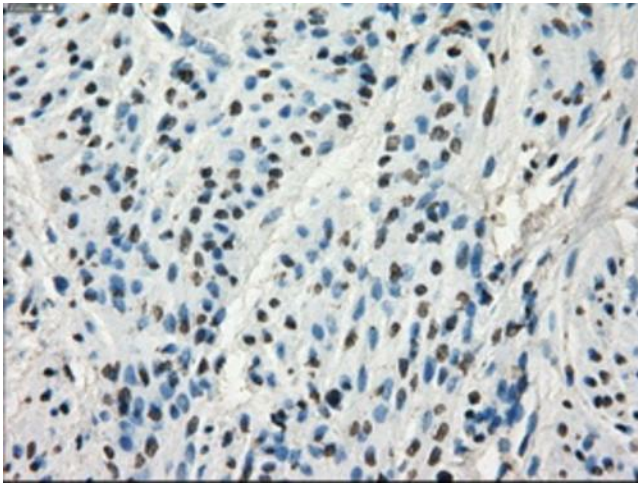
Immunohistochemical staining of paraffin-embedded colon tissue within the normal limits using anti-GBP2 mouse monoclonal antibody. Heat-induced epitope retrieval by EDTA solution buffer pH 8.0 at 120°C for 3 min.



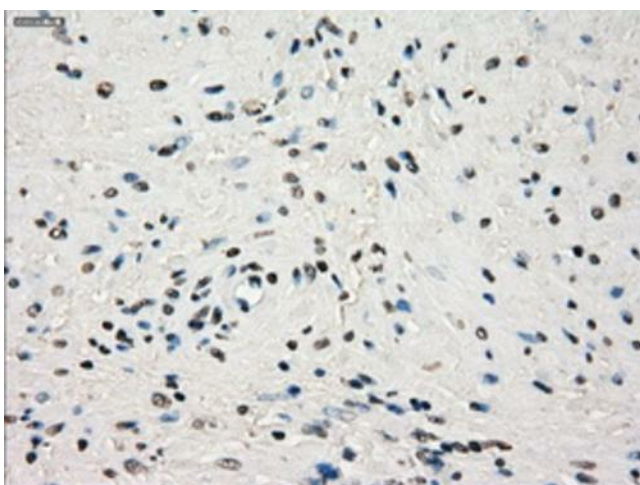
Immunohistochemical staining of paraffin-embedded Kidney tissue within the normal limits using anti-GBP2mouse monoclonal antibody. Heat-induced epitope retrieval by EDTA solution buffer pH 8.0 at 120°C for 3 min.



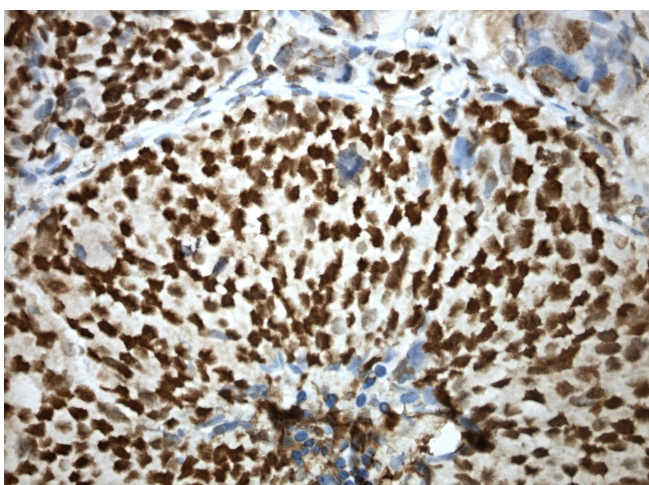
Immunohistochemical staining of paraffin-embedded pancreas tissue within the normal limits using anti-GBP2mouse monoclonal antibody. Heat-induced epitope retrieval by EDTA solution buffer pH 8.0 at 120°C for 3 min.



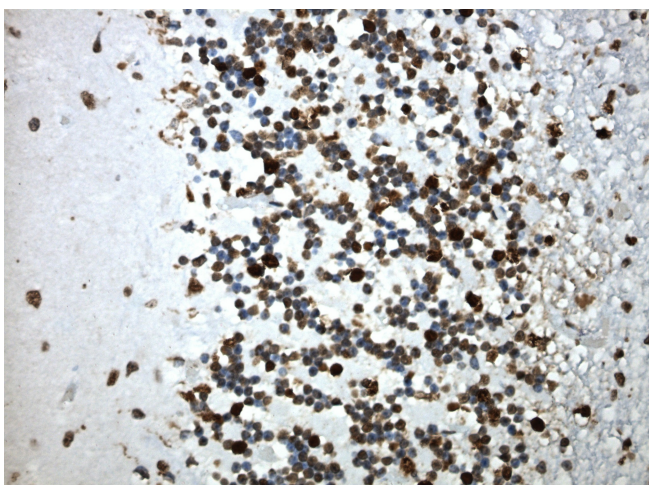
Immunohistochemical staining of paraffin-embedded endometrium tissue within the normal limits using anti-GBP2mouse monoclonal antibody. Heat-induced epitope retrieval by EDTA solution buffer pH 8.0 at 120°C for 3 min.



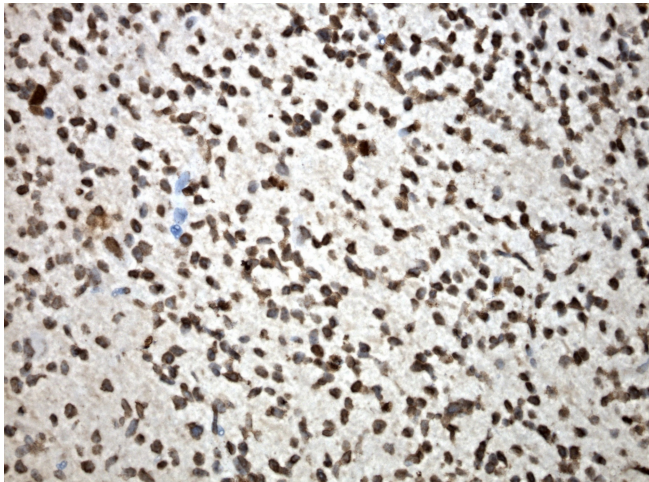
Immunohistochemical staining of paraffin-embedded prostate tissue within the normal limits using anti-GBP2 mouse monoclonal antibody. Heat-induced epitope retrieval by EDTA solution buffer pH 8.0 at 120°C for 3 min.



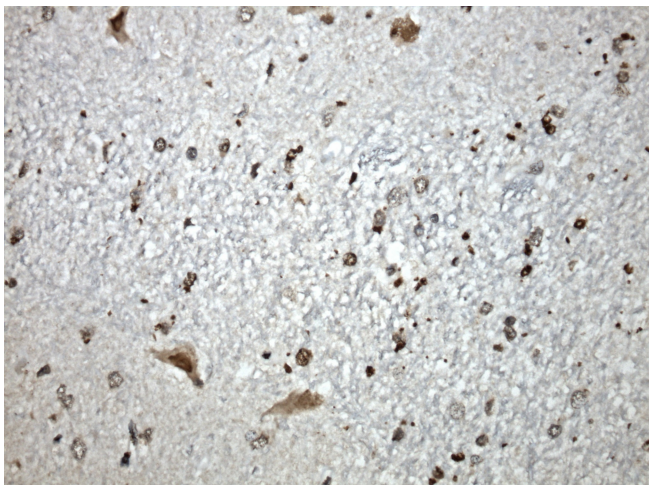
Immunohistochemical staining of paraffin-embedded ovarian cancer using GBP2 antibody [TA500656] clone OTI3B8 mouse monoclonal antibody. Protocol used HIER TEE pH9.0 (cat# [B21-100]) and anti-GBP2 at 1:100 dilution. Detection was done with Polink1 Broad Mouse and Rabbit C/N [D11-18] with DAB Kit. Image 40x magnification.



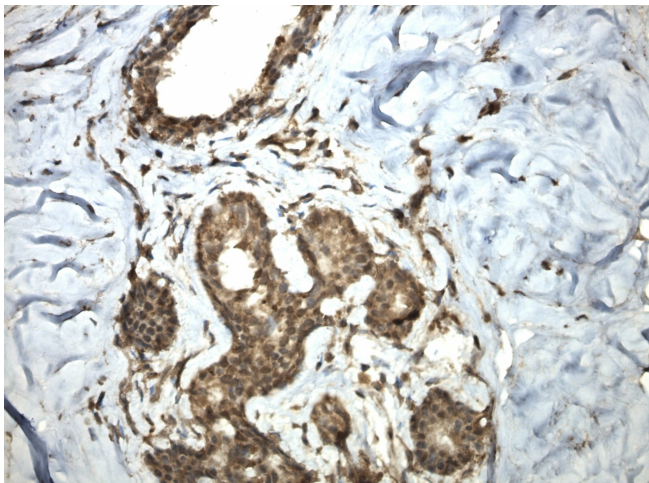
Immunohistochemical staining of paraffin-embedded cerebellum using GBP2 antibody [TA500656] clone OTI3B8 mouse monoclonal antibody. Protocol used HIER TEE pH9.0 (cat# [B21-100]) and anti-GBP2 at 1:100 dilution. Detection was done with Polink1 Broad Mouse and Rabbit C/N [D11-18] with DAB Kit. Image 40x magnification.



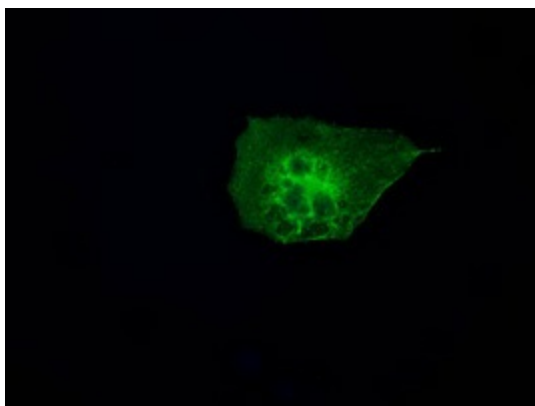
Immunohistochemical staining of paraffin-embedded glioma using GBP2 antibody [TA500656] clone OTI3B8 mouse monoclonal antibody. Protocol used HIER TEE pH9.0 (cat# [B21-100]) and anti-GBP2 at 1:100 dilution. Detection was done with Polink1 Broad Mouse and Rabbit C/N [D11-18] with DAB Kit. Image 40x magnification.



Immunohistochemical staining of paraffin-embedded brain using GBP2 antibody [TA500656] clone OTI3B8 mouse monoclonal antibody. Protocol used HIER TEE pH9.0 (cat# [B21-100]) and anti-GBP2 at 1:100 dilution. Detection was done with Polink1 Broad Mouse and Rabbit C/N [D11-18] with DAB Kit. Image 40x magnification.



Immunohistochemical staining of paraffin-embedded breast cancer using GBP2 antibody [TA500656] clone OTI3B8 mouse monoclonal antibody. Protocol used HIER TEE pH9.0 (cat# [B21-100]) and anti-GBP2 at 1:100 dilution. Detection was done with Polink1 Broad Mouse and Rabbit C/N [D11-18] with DAB Kit. Image 40x magnification.



Anti-GBP2 mouse monoclonal antibody ([TA500656]) immunofluorescent staining of COS7 cells transiently transfected by pCMV6-ENTRY GBP2 ([RC209939]).