

## Product datasheet for **CF500651**

### CD32A (FCGR2A) Mouse Monoclonal Antibody [Clone ID: OTI16E7]

#### Product data:

Product Type:	Primary Antibodies
Clone Name:	OTI16E7
Applications:	IF, WB
Recommended Dilution:	WB 1:2000, IHC 1:50, IF 1:100
Reactivity:	Human
Host:	Mouse
Isotype:	IgG1
Clonality:	Monoclonal
Immunogen:	Full-length protein expressed in 293T cell transfected with human FCGR2A expression vector
Formulation:	Lyophilized powder (original buffer 1X PBS, pH 7.3, 8% trehalose)
Reconstitution Method:	For reconstitution, we recommend adding 100uL distilled water to a final antibody concentration of about 1 mg/mL. To use this carrier-free antibody for conjugation experiment, we strongly recommend performing another round of desalting process. (OriGene recommends Zeba Spin Desalting Columns, 7KMWCO from Thermo Scientific)
Purification:	Purified from mouse ascites fluids or tissue culture supernatant by affinity chromatography (protein A/G)
Conjugation:	Unconjugated
Storage:	Store at -20°C as received.
Stability:	Stable for 12 months from date of receipt.
Predicted Protein Size:	35.0 kDa
Gene Name:	Fc fragment of IgG receptor IIa
Database Link:	<a href="#">NP_067674</a> <a href="#">Entrez Gene 2212 Human</a> <a href="#">P12318</a>



[View online »](#)

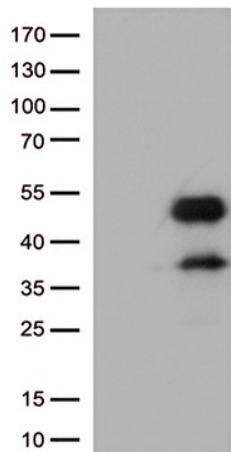
**Background:** This gene encodes one member of a family of immunoglobulin Fc receptor genes found on the surface of many immune response cells. The protein encoded by this gene is a cell surface receptor found on phagocytic cells such as macrophages and neutrophils, and is involved in the process of phagocytosis and clearing of immune complexes. Alternative splicing results in multiple transcript variants.

**Synonyms:** CD32; CD32A; CDw32; FCG2; FcGR; FCGR2; FCGR2A1; IGFR2

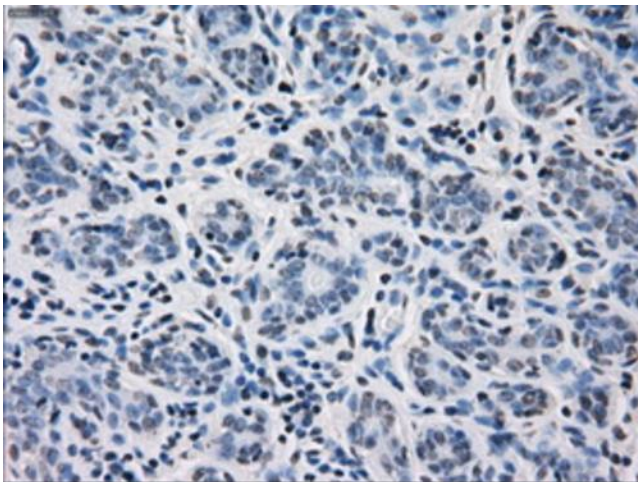
**Protein Families:** ES Cell Differentiation/IPS, Transmembrane

**Protein Pathways:** Fc gamma R-mediated phagocytosis, Systemic lupus erythematosus

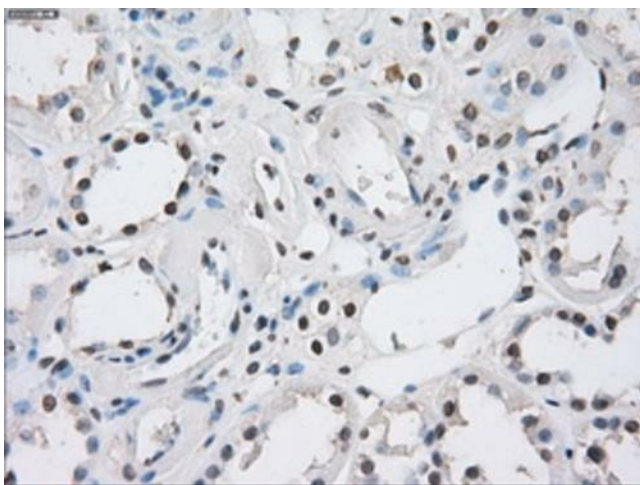
### Product images:



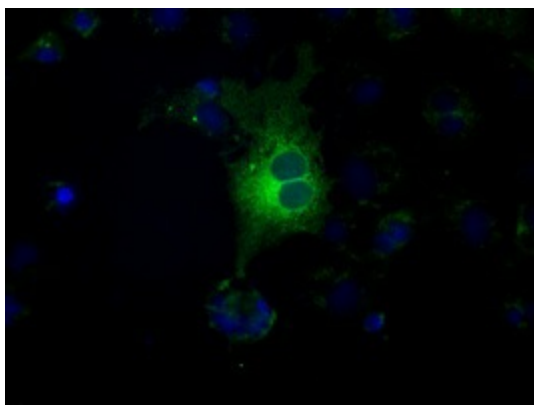
HEK293T cells were transfected with the pCMV6-ENTRY control (Left lane) or pCMV6-ENTRY FCGR2A ([RC227758], Right lane) cDNA for 48 hrs and lysed. Equivalent amounts of cell lysates (5 ug per lane) were separated by SDS-PAGE and immunoblotted with anti-FCGR2A (1:500).



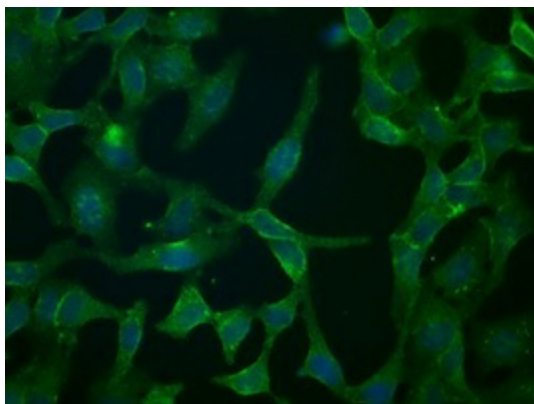
Immunohistochemical staining of paraffin-embedded breast tissue within the normal limits using anti-FCGR2A mouse monoclonal antibody. (Heat-induced epitope retrieval by 10mM citric buffer, pH6.0, 100°C for 10min, [TA500651], Dilution 1:50)



Immunohistochemical staining of paraffin-embedded Kidney tissue within the normal limits using anti-FCGR2A mouse monoclonal antibody. (Heat-induced epitope retrieval by 10mM citric buffer, pH6.0, 100°C for 10min, [TA500651], Dilution 1:50)



Anti-FCGR2A mouse monoclonal antibody ([TA500651]) immunofluorescent staining of COS7 cells transiently transfected by pCMV6-ENTRY FCGR2A ([RC205786]).



Immunofluorescent staining of HeLa cells using anti-FCGR2A mouse monoclonal antibody ([TA500651]).