

## Product datasheet for **CF500639**

### SLC2A6 Mouse Monoclonal Antibody [Clone ID: OTI7E3]

#### Product data:

|                         |  |
|-------------------------|--|
| Product Type:           | Primary Antibodies   |
| Clone Name:             | OTI7E3   |
| Applications:           | IF, IHC  |
| Recommended Dilution:   | IHC 1:200, IF 1:100  |
| Reactivity:             | Human  |
| Host:                   | Mouse  |
| Isotype:                | IgG2a  |
| Clonality:              | Monoclonal   |
| Immunogen:              | Full-length protein expressed in 293T cell transfected with human SLC2A6 expression vector   |
| Formulation:            | Lyophilized powder (original buffer 1X PBS, pH 7.3, 8% trehalose)  |
| Reconstitution Method:  | For reconstitution, we recommend adding 100uL distilled water to a final antibody concentration of about 1 mg/mL. To use this carrier-free antibody for conjugation experiment, we strongly recommend performing another round of desalting process. (OriGene recommends Zeba Spin Desalting Columns, 7KMWCO from Thermo Scientific) |
| Purification:           | Purified from mouse ascites fluids or tissue culture supernatant by affinity chromatography (protein A/G)  |
| Conjugation:            | Unconjugated   |
| Storage:                | Store at -20°C as received.  |
| Stability:              | Stable for 12 months from date of receipt.   |
| Predicted Protein Size: | 54.5 kDa   |
| Gene Name:              | solute carrier family 2 member 6   |
| Database Link:          | <a href="#">NP_060055</a><br><a href="#">Entrez Gene 11182 Human</a><br><a href="#">Q9UGQ3</a>   |
| Background:             | Hexose transport into mammalian cells is catalyzed by a family of membrane proteins, including SLC2A6, that contain 12 transmembrane domains and a number of critical conserved residues.  |

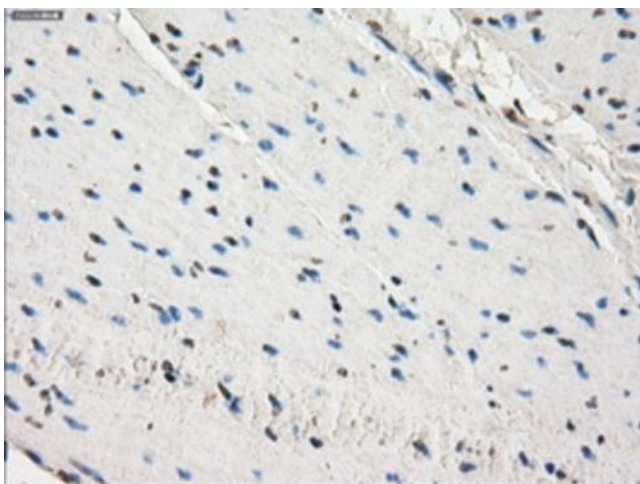


[View online »](#)

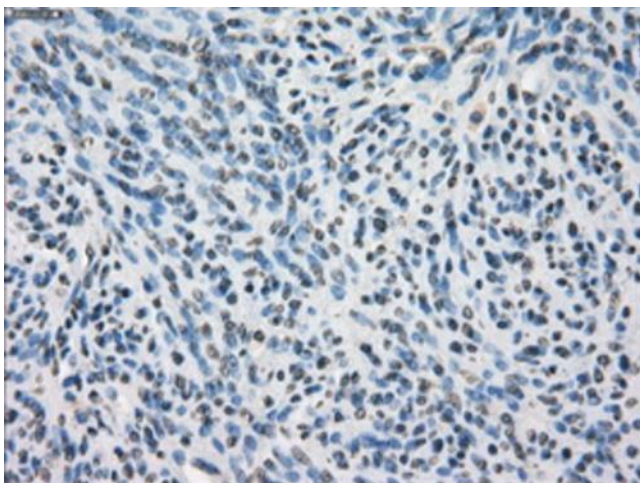
Synonyms: GLUT6; GLUT9; HSA011372

Protein Families: Transmembrane

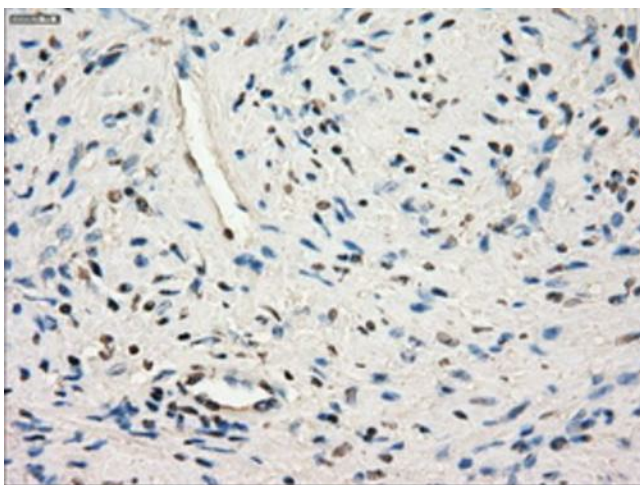
### Product images:



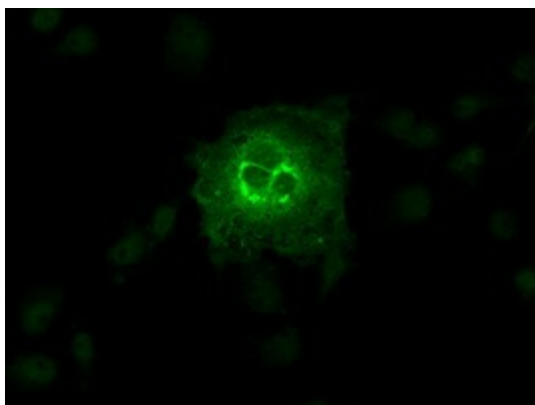
Immunohistochemical staining of paraffin-embedded colon tissue within the normal limits using anti-SLC2A6 mouse monoclonal antibody. Heat-induced epitope retrieval by EDTA solution buffer pH 8.0 at 120°C for 3 min.



Immunohistochemical staining of paraffin-embedded endometrium tissue within the normal limits using anti-SLC2A6 mouse monoclonal antibody. Heat-induced epitope retrieval by EDTA solution buffer pH 8.0 at 120°C for 3 min.



Immunohistochemical staining of paraffin-embedded prostate tissue within the normal limits using anti-SLC2A6 mouse monoclonal antibody. Heat-induced epitope retrieval by EDTA solution buffer pH 8.0 at 120°C for 3 min.



Anti-SLC2A6 mouse monoclonal antibody ([TA500639]) immunofluorescent staining of COS7 cells transiently transfected by pCMV6-ENTRY SLC2A6 ([RC204391]).