

Product datasheet for **CF500638**

PDE10A Mouse Monoclonal Antibody [Clone ID: OTI3G9]

Product data:

Product Type:	Primary Antibodies
Clone Name:	OTI3G9
Applications:	FC, IF
Recommended Dilution:	IF 1:100, FLOW 1:100
Reactivity:	Human, Mouse, Rat
Host:	Mouse
Isotype:	IgG2b
Clonality:	Monoclonal
Immunogen:	Full length human recombinant protein of human PDE10A (NP_006652) produced in HEK293T cell.
Formulation:	Lyophilized powder (original buffer 1X PBS, pH 7.3, 8% trehalose)
Reconstitution Method:	For reconstitution, we recommend adding 100uL distilled water to a final antibody concentration of about 1 mg/mL. To use this carrier-free antibody for conjugation experiment, we strongly recommend performing another round of desalting process. (OriGene recommends Zeba Spin Desalting Columns, 7KMWCO from Thermo Scientific)
Purification:	Purified from mouse ascites fluids or tissue culture supernatant by affinity chromatography (protein A/G)
Conjugation:	Unconjugated
Storage:	Store at -20°C as received.
Stability:	Stable for 12 months from date of receipt.
Gene Name:	phosphodiesterase 10A
Database Link:	NP_006652 Entrez Gene 63885 Rat Entrez Gene 10846 Human Q9Y233
Background:	Various cellular responses are regulated by the second messengers cAMP and cGMP. Phosphodiesterases, such as PDE10A, eliminate cAMP- and cGMP-mediated intracellular signaling by hydrolyzing the cyclic nucleotide to the corresponding nucleoside 5-prime monophosphate (Fujishige et al., 2000 [PubMed 10998054]). [supplied by OMIM]



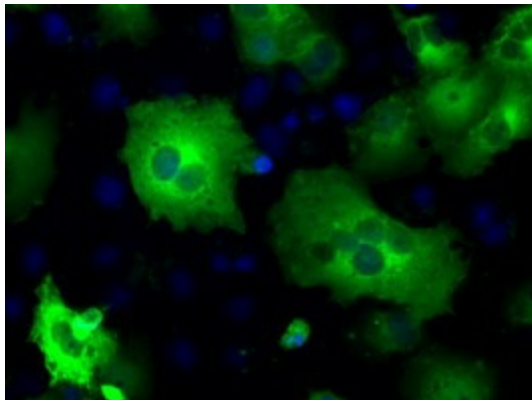
[View online »](#)

Synonyms: FLJ11894; FLJ25677; HSPDE10A

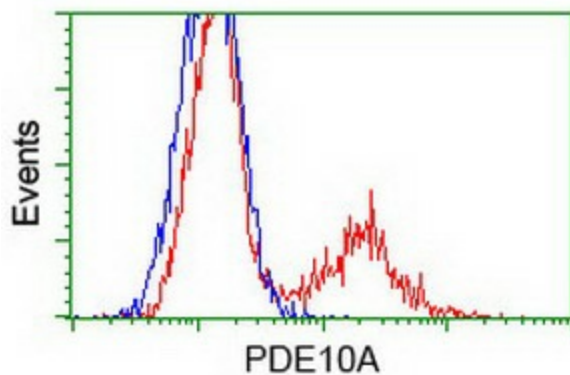
Protein Families: Druggable Genome

Protein Pathways: Progesterone-mediated oocyte maturation, Purine metabolism

Product images:



Anti-PDE10A mouse monoclonal antibody ([TA500638]) immunofluorescent staining of COS7 cells transiently transfected by pCMV6-ENTRY PDE10A ([RC211181]).



HEK293T cells transfected with either [RC211181] overexpress plasmid (Red) or empty vector control plasmid (Blue) were immunostained by anti-PDE10A antibody ([TA500638]), and then analyzed by flow cytometry.