

Product datasheet for **CF500628**

PCSK7 Mouse Monoclonal Antibody [Clone ID: OTI1B8]

Product data:

| | |
|-------------------------|--|
| Product Type: | Primary Antibodies |
| Clone Name: | OTI1B8 |
| Applications: | FC, IF |
| Recommended Dilution: | IF 1:100, FLOW 1:100 |
| Reactivity: | Human, Mouse, Rat |
| Host: | Mouse |
| Isotype: | IgG2a |
| Clonality: | Monoclonal |
| Immunogen: | Full length human recombinant protein of human PCSK7 (NP_004707) produced in HEK293T cell. |
| Formulation: | Lyophilized powder (original buffer 1X PBS, pH 7.3, 8% trehalose) |
| Reconstitution Method: | For reconstitution, we recommend adding 100uL distilled water to a final antibody concentration of about 1 mg/mL. To use this carrier-free antibody for conjugation experiment, we strongly recommend performing another round of desalting process. (OriGene recommends Zeba Spin Desalting Columns, 7KMWCO from Thermo Scientific) |
| Purification: | Purified from mouse ascites fluids or tissue culture supernatant by affinity chromatography (protein A/G) |
| Conjugation: | Unconjugated |
| Storage: | Store at -20°C as received. |
| Stability: | Stable for 12 months from date of receipt. |
| Predicted Protein Size: | 86.2 kDa |
| Gene Name: | proprotein convertase subtilisin/kexin type 7 |
| Database Link: | NP_004707 Entrez Gene 9159 Human Q16549 |



[View online »](#)

Background:

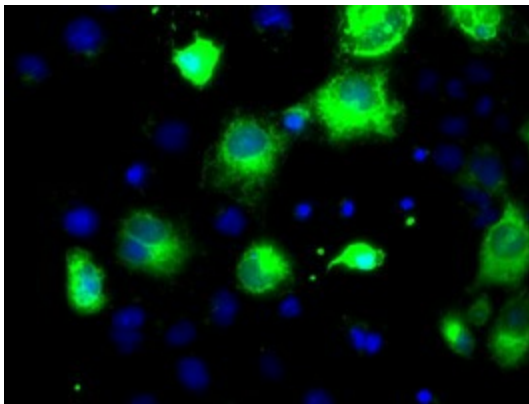
The protein encoded by this gene belongs to the subtilisin-like proprotein convertase family. The members of this family are proprotein convertases that process latent precursor proteins into their biologically active products. This encoded protein is a calcium-dependent serine endoprotease. It is structurally related to its family members, PACE and PACE4. This protein is concentrated in the trans-Golgi network, associated with the membranes, and is not secreted. It can process proalbumin and is thought to be responsible for the activation of HIV envelope glycoproteins gp160 and gp140. This gene has been implicated in the transcriptional regulation of housekeeping genes. Multiple alternatively spliced transcripts are described for this gene but their full length nature is not yet known. Downstream of this gene's map location at 11q23-q24, nucleotides that match part of this gene's 3' end are duplicated and inverted. A translocation breakpoint associated with lymphoma occurs between this gene and its inverted counterpart.

Synonyms:

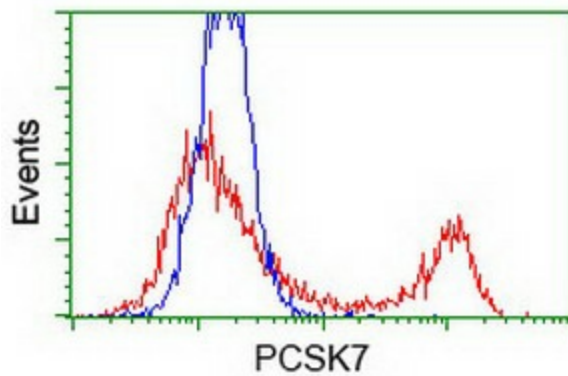
LPC; PC7; PC8; SPC7

Protein Families:

Druggable Genome, Protease, Transmembrane

Product images:

Anti-PCSK7 mouse monoclonal antibody ([TA500628]) immunofluorescent staining of COS7 cells transiently transfected by pCMV6-ENTRY PCSK7 ([RC203896]).



HEK293T cells transfected with either [RC203896] overexpress plasmid (Red) or empty vector control plasmid (Blue) were immunostained by anti-PCSK7 antibody ([TA500628]), and then analyzed by flow cytometry.