

Product datasheet for CF500621

Tristetraprolin (ZFP36) Mouse Monoclonal Antibody [Clone ID: OTI3D10]

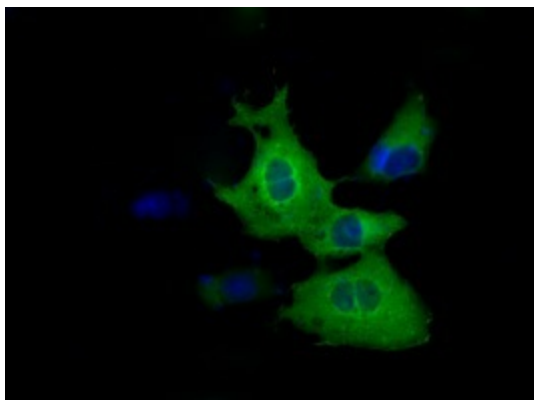
Product data:

Product Type:	Primary Antibodies
Clone Name:	OTI3D10
Applications:	FC, IF, WB
Recommended Dilution:	IF 1:100, Flow 1:100
Reactivity:	Human, Mouse, Rat
Host:	Mouse
Isotype:	IgG1
Clonality:	Monoclonal
Immunogen:	Full length human recombinant protein of human ZFP36 (NP_003398) produced in HEK293T cell.
Formulation:	Lyophilized powder (original buffer 1X PBS, pH 7.3, 8% trehalose)
Reconstitution Method:	For reconstitution, we recommend adding 100uL distilled water to a final antibody concentration of about 1 mg/mL. To use this carrier-free antibody for conjugation experiment, we strongly recommend performing another round of desalting process. (OriGene recommends Zeba Spin Desalting Columns, 7KMWCO from Thermo Scientific)
Purification:	Purified from mouse ascites fluids or tissue culture supernatant by affinity chromatography (protein A/G)
Conjugation:	Unconjugated
Storage:	Store at -20°C as received.
Stability:	Stable for 12 months from date of receipt.
Predicted Protein Size:	34.0 kDa
Gene Name:	ZFP36 ring finger protein
Database Link:	NP_003398 Entrez Gene 7538 Human P26651
Background:	Probable regulatory protein with a novel zinc finger structure involved in regulating the response to growth factors. Has been experimentally shown to be able to bind zinc

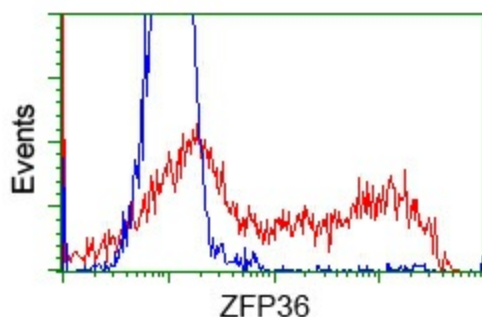
[View online »](#)

Synonyms: GOS24; GOS24; NUP475; RNF162A; TIS11; TTP; zfp-36

Product images:



Anti-ZFP36 mouse monoclonal antibody ([TA500621]) immunofluorescent staining of COS7 cells transiently transfected by pCMV6-ENTRY ZFP36 ([RC202049]).



HEK293T cells transfected with either pCMV6-ENTRY ZFP36 ([RC202049]) (Red) or empty vector control plasmid (Blue) were immunostained with anti-ZFP36 mouse monoclonal ([TA500621]), and then analyzed by flow cytometry.