

## Product datasheet for **CF500587**

### **KDM4C Mouse Monoclonal Antibody [Clone ID: OTI4B1]**

#### **Product data:**

<b>Product Type:</b>	Primary Antibodies
<b>Clone Name:</b>	OTI4B1
<b>Applications:</b>	FC, IF, IHC
<b>Recommended Dilution:</b>	IHC 1:50, IF 1:100, FLOW 1:100
<b>Reactivity:</b>	Human, Rat
<b>Host:</b>	Mouse
<b>Isotype:</b>	IgG1
<b>Clonality:</b>	Monoclonal
<b>Immunogen:</b>	Full length human recombinant protein of human KDM4C (NP_055876) produced in HEK293T cell.
<b>Formulation:</b>	Lyophilized powder (original buffer 1X PBS, pH 7.3, 8% trehalose)
<b>Reconstitution Method:</b>	For reconstitution, we recommend adding 100uL distilled water to a final antibody concentration of about 1 mg/mL. To use this carrier-free antibody for conjugation experiment, we strongly recommend performing another round of desalting process. (OriGene recommends Zeba Spin Desalting Columns, 7KMWCO from Thermo Scientific)
<b>Purification:</b>	Purified from mouse ascites fluids or tissue culture supernatant by affinity chromatography (protein A/G)
<b>Conjugation:</b>	Unconjugated
<b>Storage:</b>	Store at -20°C as received.
<b>Stability:</b>	Stable for 12 months from date of receipt.
<b>Predicted Protein Size:</b>	119.8 kDa
<b>Gene Name:</b>	lysine demethylase 4C
<b>Database Link:</b>	<a href="#">NP_055876</a> <a href="#">Entrez Gene 23081 Human</a> <a href="#">Q9H3R0</a>



[View online »](#)

**Background:**

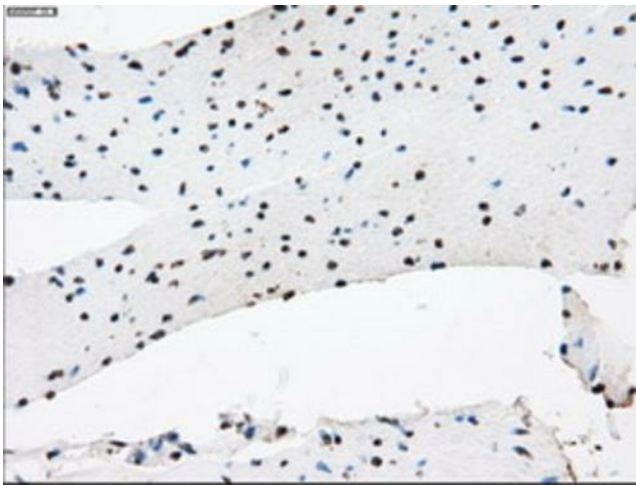
This gene is a member of the Jumonji domain 2 (JMJD2) family and encodes a protein with one JmjC domain, one JmjN domain, two PHD-type zinc fingers, and two Tudor domains. This nuclear protein functions as a trimethylation-specific demethylase, converting specific trimethylated histone residues to the dimethylated form. Chromosomal aberrations and increased transcriptional expression of this gene are associated with esophageal squamous cell carcinoma. Alternative splicing results in multiple transcript variants. [provided by RefSeq]

**Synonyms:**

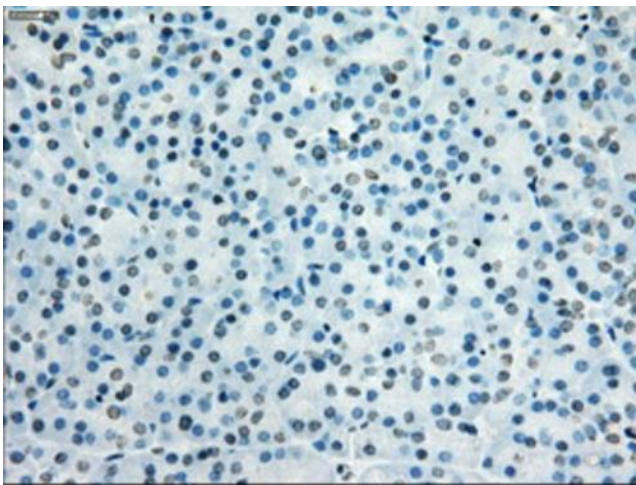
GASC1; JHDM3C; JMJD2C; TDRD14C

**Protein Families:**

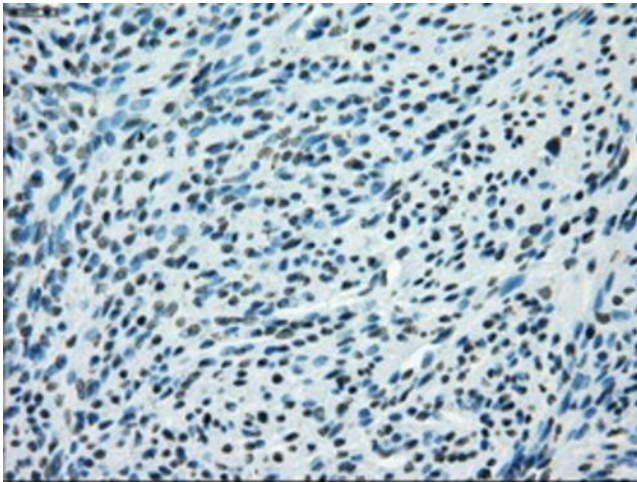
Druggable Genome, Transcription Factors

**Product images:**

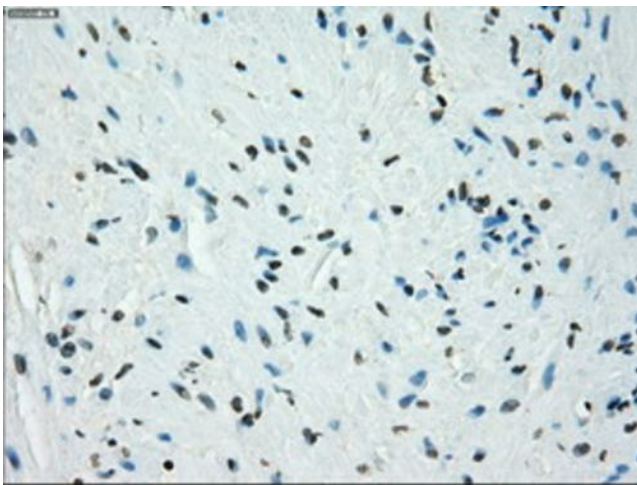
Immunohistochemical staining of paraffin-embedded Human colon tissue within the normal limits using anti-KDM4C mouse monoclonal antibody. (Heat-induced epitope retrieval by 10mM citric buffer, pH6.0, 100°C for 10min, [TA500587])



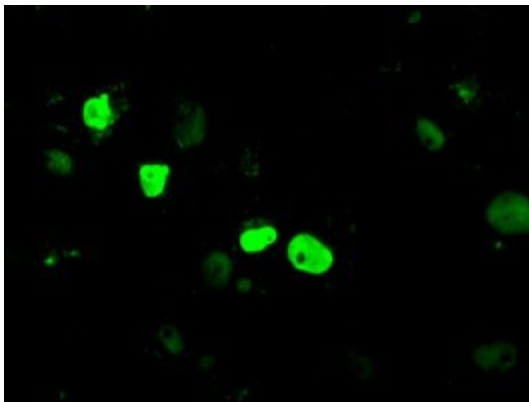
Immunohistochemical staining of paraffin-embedded Human pancreas tissue within the normal limits using anti-KDM4C mouse monoclonal antibody. (Heat-induced epitope retrieval by 10mM citric buffer, pH6.0, 100°C for 10min, [TA500587])



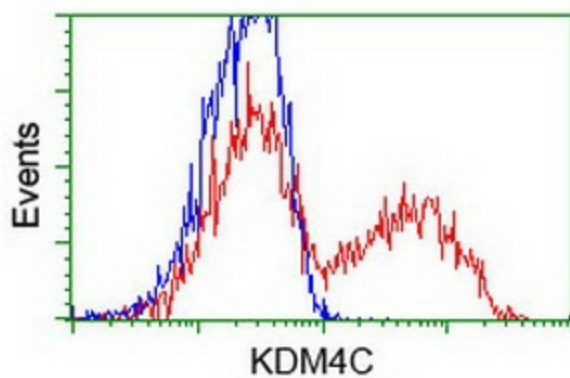
Immunohistochemical staining of paraffin-embedded Human endometrium tissue within the normal limits using anti-KDM4C mouse monoclonal antibody. (Heat-induced epitope retrieval by 10mM citric buffer, pH6.0, 100°C for 10min, [TA500587])



Immunohistochemical staining of paraffin-embedded Human prostate tissue within the normal limits using anti-KDM4C mouse monoclonal antibody. (Heat-induced epitope retrieval by 10mM citric buffer, pH6.0, 100°C for 10min, [TA500587])



Anti-KDM4C mouse monoclonal antibody ([TA500587]) immunofluorescent staining of COS7 cells transiently transfected by pCMV6-ENTRY KDM4C ([RC211182]).



HEK293T cells transfected with either [RC211182] overexpress plasmid (Red) or empty vector control plasmid (Blue) were immunostained by anti-KDM4C antibody ([TA500587]), and then analyzed by flow cytometry.