

Product datasheet for **CF500572**

Cytochrome P450 Reductase (POR) Mouse Monoclonal Antibody [Clone ID: OTI3H10]

Product data:

Product Type:	Primary Antibodies
Clone Name:	OTI3H10
Applications:	FC, IF, IHC, WB
Recommended Dilution:	WB 1:1000, IHC 1:50, IF 1:100, Flow 1:100
Reactivity:	Human, Mouse, Rat
Host:	Mouse
Isotype:	IgG1
Clonality:	Monoclonal
Immunogen:	Full-length protein expressed in 293T cell transfected with human POR expression vector
Formulation:	Lyophilized powder (original buffer 1X PBS, pH 7.3, 8% trehalose)
Reconstitution Method:	For reconstitution, we recommend adding 100uL distilled water to a final antibody concentration of about 1 mg/mL. To use this carrier-free antibody for conjugation experiment, we strongly recommend performing another round of desalting process. (OriGene recommends Zeba Spin Desalting Columns, 7KMWCO from Thermo Scientific)
Purification:	Purified from mouse ascites fluids or tissue culture supernatant by affinity chromatography (protein A/G)
Conjugation:	Unconjugated
Storage:	Store at -20°C as received.
Stability:	Stable for 12 months from date of receipt.
Predicted Protein Size:	76.7 kDa
Gene Name:	cytochrome p450 oxidoreductase
Database Link:	NP_000932 Entrez Gene 18984 Mouse Entrez Gene 29441 Rat Entrez Gene 5447 Human P16435



[View online »](#)

Background:

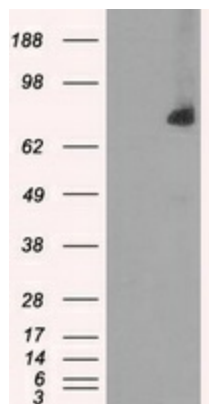
This gene encodes an endoplasmic reticulum membrane oxidoreductase with an FAD-binding domain and a flavodoxin-like domain. The protein binds two cofactors, FAD and FMN, which allow it to donate electrons directly from NADPH to all microsomal P450 enzymes. Mutations in this gene have been associated with various diseases, including apparent combined P450C17 and P450C21 deficiency, amenorrhea and disordered steroidogenesis, congenital adrenal hyperplasia and Antley-Bixler syndrome.

Synonyms:

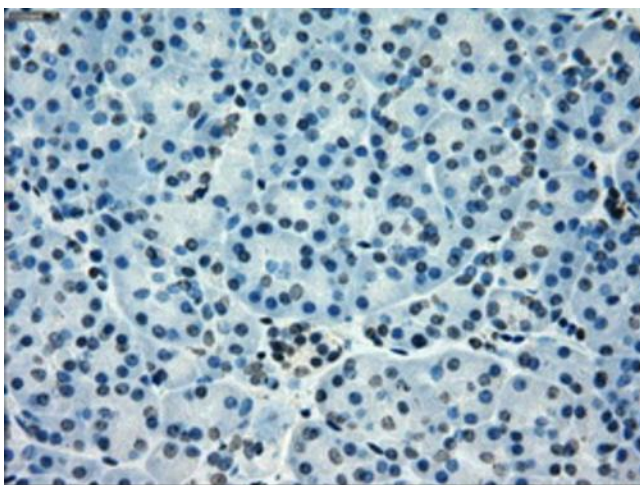
CPR; CYPOR; P450R

Protein Families:

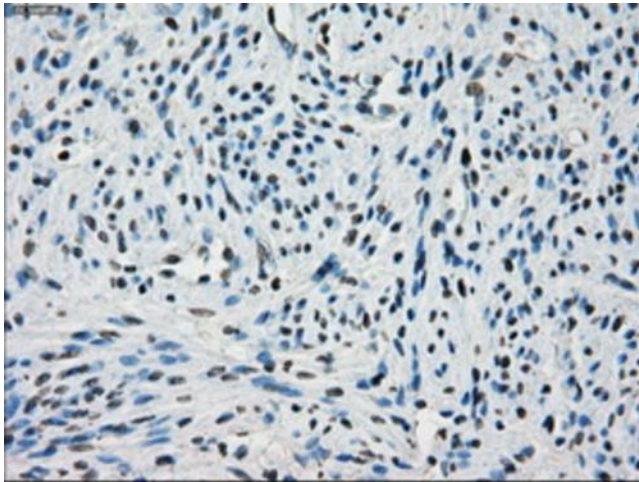
Druggable Genome, P450, Transmembrane

Product images:

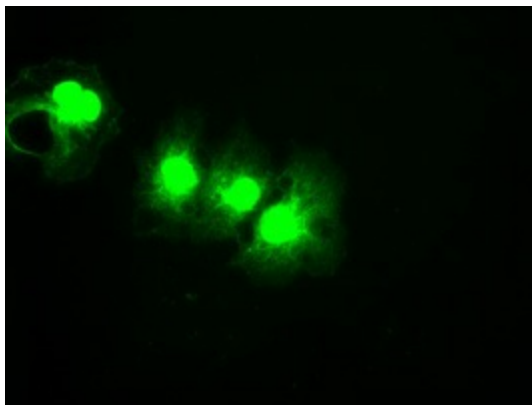
HEK293T cells were transfected with the pCMV6-ENTRY control (Left lane) or pCMV6-ENTRY POR ([RC202172], Right lane) cDNA for 48 hrs and lysed. Equivalent amounts of cell lysates (5 ug per lane) were separated by SDS-PAGE and immunoblotted with anti-POR. Positive lysates [LY424436] (100ug) and [LC424436] (20ug) can be purchased separately from OriGene.



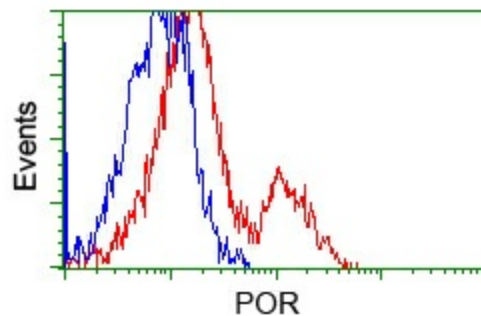
Immunohistochemical staining of paraffin-embedded pancreas tissue within the normal limits using anti-POR mouse monoclonal antibody. (Heat-induced epitope retrieval by 10mM citric buffer, pH6.0, 100°C for 10min, [TA500572], Dilution 1:50)



Immunohistochemical staining of paraffin-embedded endometrium tissue within the normal limits using anti-POR mouse monoclonal antibody. (Heat-induced epitope retrieval by 10mM citric buffer, pH6.0, 100°C for 10min, [TA500572], Dilution 1:50)



Anti-POR mouse monoclonal antibody ([TA500572]) immunofluorescent staining of COS7 cells transiently transfected by pCMV6-ENTRY POR ([RC202172]).



HEK293T cells transfected with either pCMV6-ENTRY POR ([RC202172]) (Red) or empty vector control plasmid (Blue) were immunostained with anti-POR mouse monoclonal ([TA500572], Dilution 1:1,000), and then analyzed by flow cytometry.