

Product datasheet for **CF500571**

PP5 (PPP5C) Mouse Monoclonal Antibody [Clone ID: OTI4E1]

Product data:

Product Type:	Primary Antibodies
Clone Name:	OTI4E1
Applications:	IHC, WB
Recommended Dilution:	WB 1:500, IHC 1:50
Reactivity:	Human, Mouse, Rat
Host:	Mouse
Isotype:	IgG1
Clonality:	Monoclonal
Immunogen:	Full length human recombinant protein of human PPP5C (NP_006238) produced in HEK293T cell.
Formulation:	Lyophilized powder (original buffer 1X PBS, pH 7.3, 8% trehalose)
Reconstitution Method:	For reconstitution, we recommend adding 100uL distilled water to a final antibody concentration of about 1 mg/mL. To use this carrier-free antibody for conjugation experiment, we strongly recommend performing another round of desalting process. (OriGene recommends Zeba Spin Desalting Columns, 7KMWCO from Thermo Scientific)
Purification:	Purified from mouse ascites fluids or tissue culture supernatant by affinity chromatography (protein A/G)
Conjugation:	Unconjugated
Storage:	Store at -20°C as received.
Stability:	Stable for 12 months from date of receipt.
Predicted Protein Size:	56.7 kDa
Gene Name:	protein phosphatase 5 catalytic subunit
Database Link:	NP_006238 Entrez Gene 65179 Rat Entrez Gene 5536 Human P53041
Background:	May play a role in the regulation of RNA biogenesis and/or mitosis. In vitro, dephosphorylates serine residues of skeletal muscle phosphorylase and histone H1



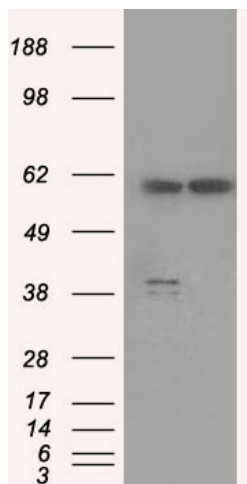
[View online »](#)

Synonyms: PP5; PPP5; PPT

Protein Families: Druggable Genome, Transcription Factors

Protein Pathways: MAPK signaling pathway

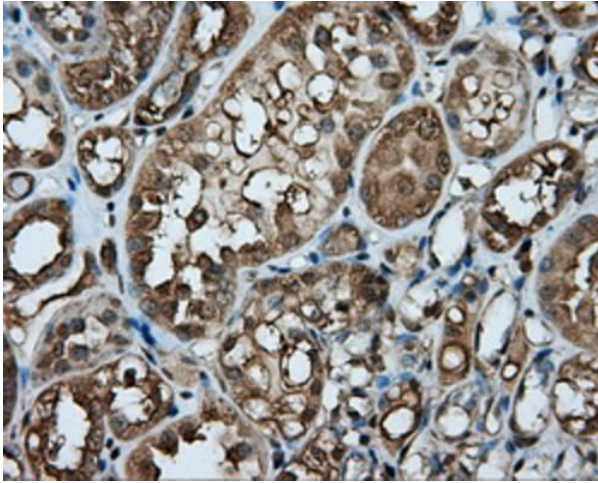
Product images:



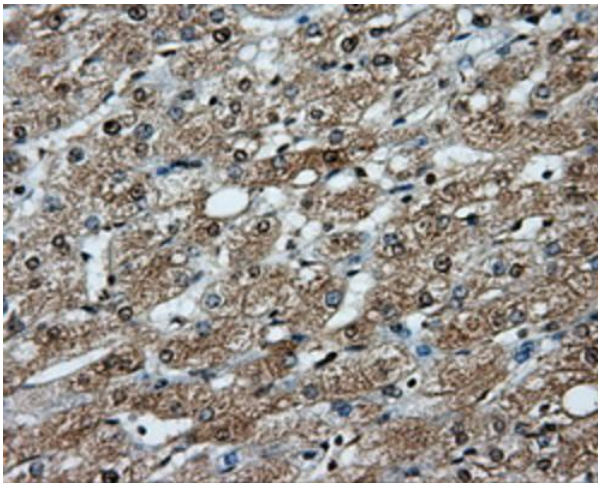
HEK293T cells were transfected with the pCMV6-ENTRY control (Left lane) or pCMV6-ENTRY PPP5C ([RC201650], Right lane) cDNA for 48 hrs and lysed. Equivalent amounts of cell lysates (5 ug per lane) were separated by SDS-PAGE and immunoblotted with anti-PPP5C. Positive lysates [LY416767] (100ug) and [LC416767] (20ug) can be purchased separately from OriGene.



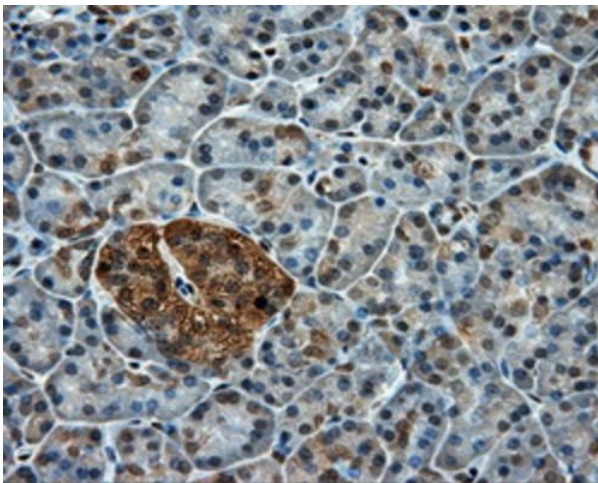
Immunohistochemical staining of paraffin-embedded colon tissue within the normal limits using anti-PPP5C mouse monoclonal antibody. Heat-induced epitope retrieval by EDTA solution buffer pH 8.0 at 120°C for 3 min.



Immunohistochemical staining of paraffin-embedded Kidney tissue within the normal limits using anti-PPP5C mouse monoclonal antibody. Heat-induced epitope retrieval by EDTA solution buffer pH 8.0 at 120°C for 3 min.



Immunohistochemical staining of paraffin-embedded liver tissue within the normal limits using anti-PPP5C mouse monoclonal antibody. Heat-induced epitope retrieval by EDTA solution buffer pH 8.0 at 120°C for 3 min.



Immunohistochemical staining of paraffin-embedded pancreas tissue within the normal limits using anti-PPP5C mouse monoclonal antibody. Heat-induced epitope retrieval by EDTA solution buffer pH 8.0 at 120°C for 3 min.