

## Product datasheet for **CF500531**

### LDHA Mouse Monoclonal Antibody [Clone ID: OTI2B11]

#### Product data:

Product Type:	Primary Antibodies
Clone Name:	OTI2B11
Applications:	IHC, IP, WB
Recommended Dilution:	WB 1:5000, IHC 1:50, IP 2ug/500ul
Reactivity:	Human, Mouse
Host:	Mouse
Isotype:	IgG1
Clonality:	Monoclonal
Immunogen:	Full length human recombinant protein of human LDHA (NP_005557) produced in HEK293T cell.
Formulation:	Lyophilized powder (original buffer 1X PBS, pH 7.3, 8% trehalose)
Reconstitution Method:	For reconstitution, we recommend adding 100uL distilled water to a final antibody concentration of about 1 mg/mL. To use this carrier-free antibody for conjugation experiment, we strongly recommend performing another round of desalting process. (OriGene recommends Zeba Spin Desalting Columns, 7KMWCO from Thermo Scientific)
Purification:	Purified from mouse ascites fluids or tissue culture supernatant by affinity chromatography (protein A/G)
Conjugation:	Unconjugated
Storage:	Store at -20°C as received.
Stability:	Stable for 12 months from date of receipt.
Predicted Protein Size:	36.5 kDa
Gene Name:	lactate dehydrogenase A
Database Link:	<a href="#">NP_005557</a> <a href="#">Entrez Gene 16828 Mouse</a> <a href="#">Entrez Gene 3939 Human</a> <a href="#">P00338</a>



[View online »](#)

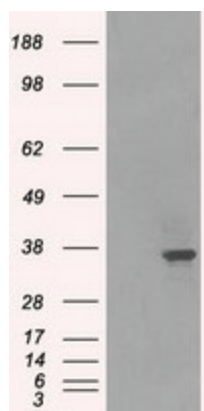
**Background:** The protein encoded by this gene catalyzes the conversion of L-lactate and NAD to pyruvate and NADH in the final step of anaerobic glycolysis. The protein is found predominantly in muscle tissue and belongs to the lactate dehydrogenase family. Mutations in this gene have been linked to exertional myoglobinuria. Multiple transcript variants encoding different isoforms have been found for this gene. The human genome contains several non-transcribed pseudogenes of this gene. [provided by RefSeq]

**Synonyms:** GSD11; HEL-S-133P; LDHM; PIG19

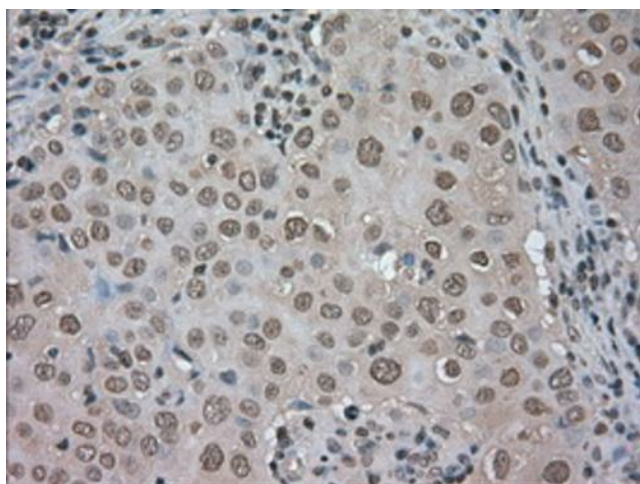
**Protein Families:** Druggable Genome

**Protein Pathways:** Cysteine and methionine metabolism, Glycolysis / Gluconeogenesis, Metabolic pathways, Propanoate metabolism, Pyruvate metabolism

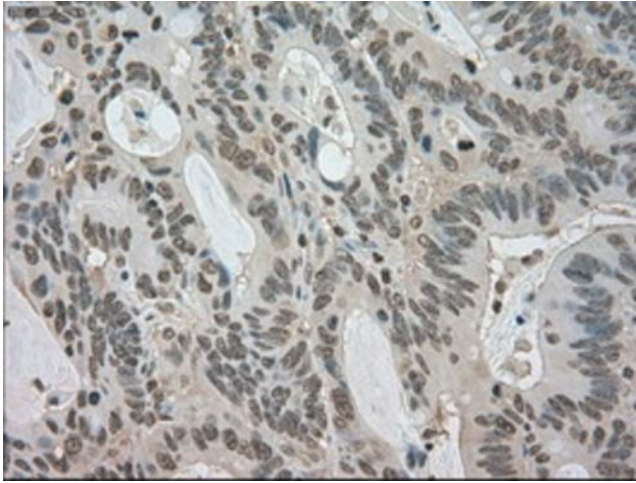
### Product images:



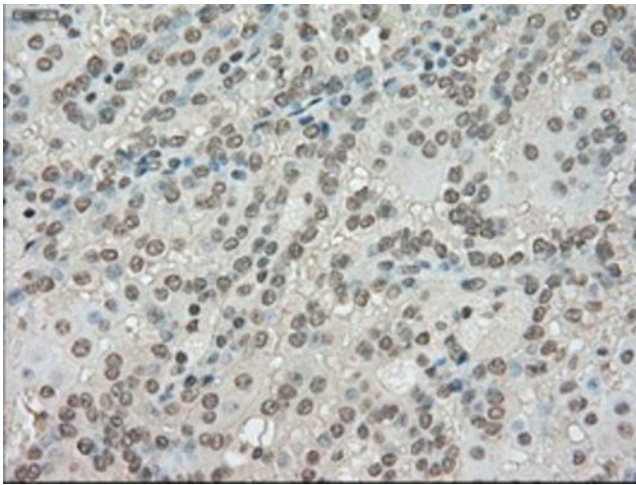
HEK293T cells were transfected with the pCMV6-ENTRY control (Cat# [PS100001], Left lane) or pCMV6-ENTRY LDHA (Cat# [RC209378], Right lane) cDNA for 48 hrs and lysed. Equivalent amounts of cell lysates (5 ug per lane) were separated by SDS-PAGE and immunoblotted with anti-LDHA (Cat# [TA500531]). Positive lysates [LY401712] (100ug) and [LC401712] (20ug) can be purchased separately from OriGene.



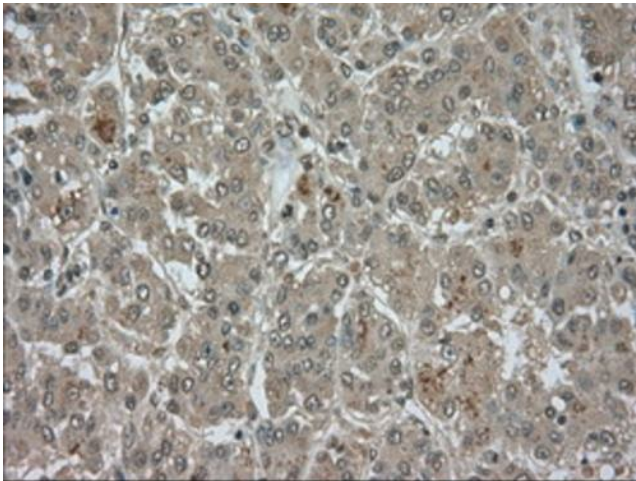
Immunohistochemical staining of paraffin-embedded Adenocarcinoma of Human breast tissue using anti-LDHA mouse monoclonal antibody. (Heat-induced epitope retrieval by 10mM citric buffer, pH6.0, 100°C for 10min, [TA500531])



Immunohistochemical staining of paraffin-embedded Adenocarcinoma of Human colon tissue using anti-LDHA mouse monoclonal antibody. (Heat-induced epitope retrieval by 10mM citric buffer, pH6.0, 100°C for 10min, [TA500531])

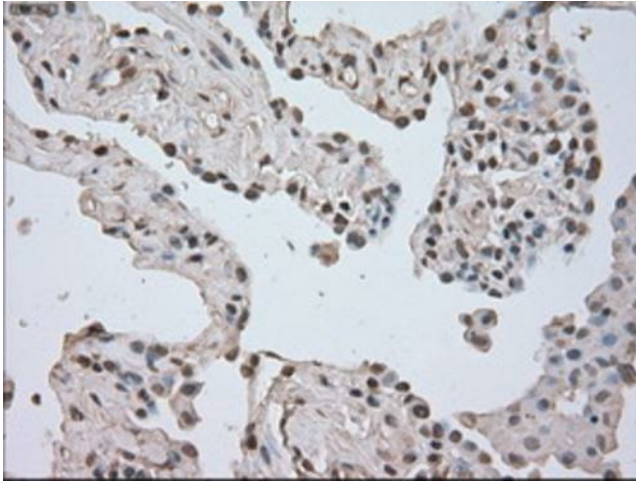


Immunohistochemical staining of paraffin-embedded Carcinoma of Human kidney tissue using anti-LDHA mouse monoclonal antibody. (Heat-induced epitope retrieval by 10mM citric buffer, pH6.0, 100°C for 10min, [TA500531])

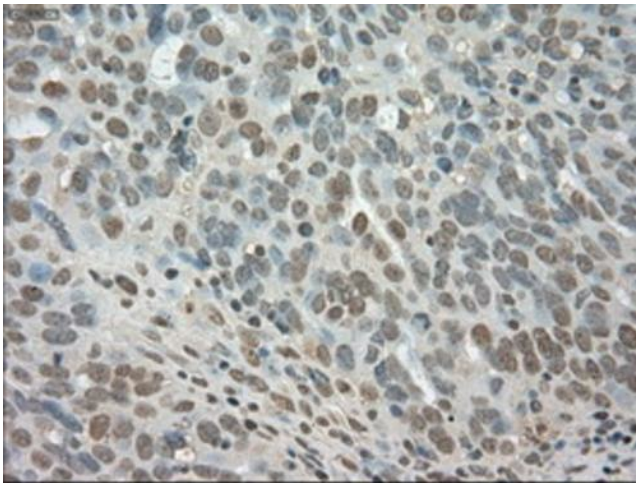


Immunohistochemical staining of paraffin-embedded Carcinoma of Human liver tissue using anti-LDHA mouse monoclonal antibody. (Heat-induced epitope retrieval by 10mM citric buffer, pH6.0, 100°C for 10min, [TA500531])

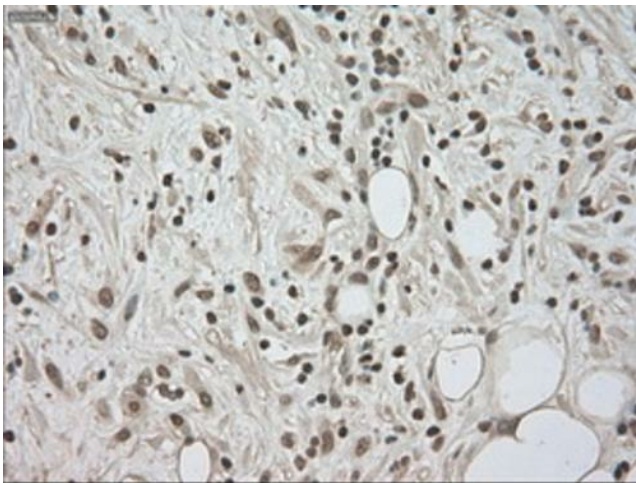




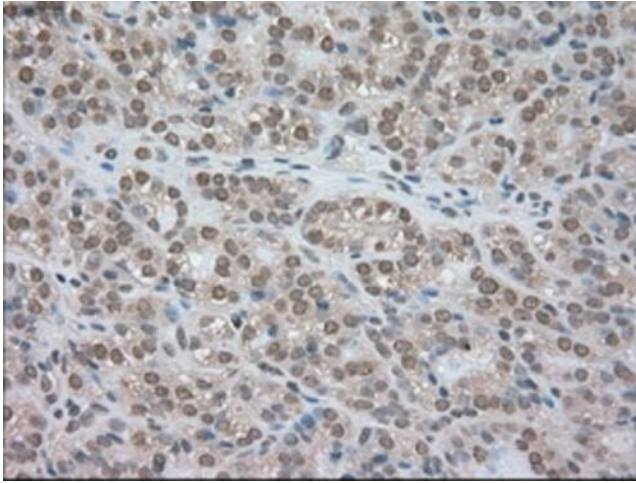
Immunohistochemical staining of paraffin-embedded Carcinoma of Human lung tissue using anti-LDHA mouse monoclonal antibody. (Heat-induced epitope retrieval by 10mM citric buffer, pH6.0, 100°C for 10min, [TA500531])



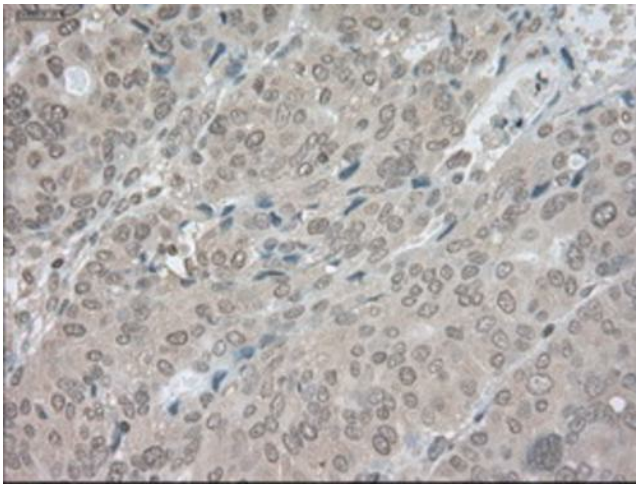
Immunohistochemical staining of paraffin-embedded Adenocarcinoma of Human ovary tissue using anti-LDHA mouse monoclonal antibody. (Heat-induced epitope retrieval by 10mM citric buffer, pH6.0, 100°C for 10min, [TA500531])



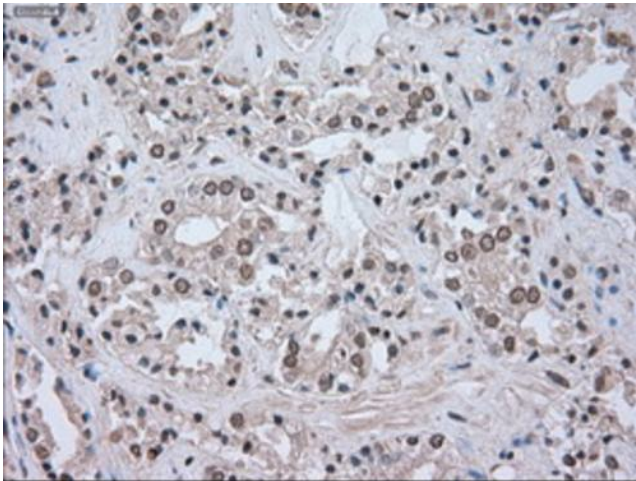
Immunohistochemical staining of paraffin-embedded Carcinoma of Human pancreas tissue using anti-LDHA mouse monoclonal antibody. (Heat-induced epitope retrieval by 10mM citric buffer, pH6.0, 100°C for 10min, [TA500531])



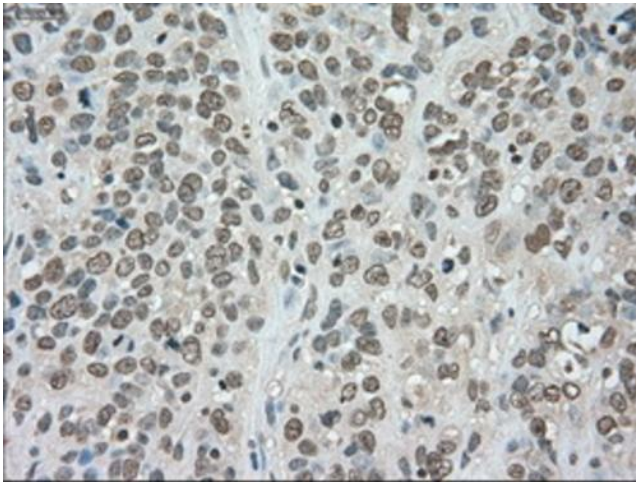
Immunohistochemical staining of paraffin-embedded Carcinoma of Human thyroid tissue using anti-LDHA mouse monoclonal antibody. (Heat-induced epitope retrieval by 10mM citric buffer, pH6.0, 100°C for 10min, [TA500531])



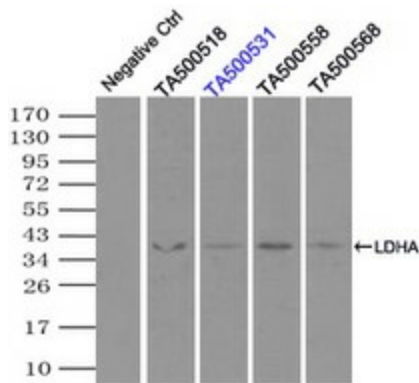
Immunohistochemical staining of paraffin-embedded Adenocarcinoma of Human endometrium tissue using anti-LDHA mouse monoclonal antibody. (Heat-induced epitope retrieval by 10mM citric buffer, pH6.0, 100°C for 10min, [TA500531])



Immunohistochemical staining of paraffin-embedded Carcinoma of Human prostate tissue using anti-LDHA mouse monoclonal antibody. (Heat-induced epitope retrieval by 10mM citric buffer, pH6.0, 100°C for 10min, [TA500531])



Immunohistochemical staining of paraffin-embedded Carcinoma of Human bladder tissue using anti-LDHA mouse monoclonal antibody. (Heat-induced epitope retrieval by 10mM citric buffer, pH6.0, 100°C for 10min, [TA500531])



Immunoprecipitation (IP) of LDHA by using TrueMab monoclonal anti-LDHA antibodies (Negative control: IP without adding anti-LDHA antibody.). For each experiment, 500ul of DDK tagged LDHA overexpression lysates (at 1:5 dilution with HEK293T lysate), 2ug of anti-LDHA antibody and 20ul (0.1mg) of goat anti-mouse conjugated magnetic beads were mixed and incubated overnight. After extensive wash to remove any non-specific binding, the immunoprecipitated products were analyzed with rabbit anti-DDK polyclonal antibody.