

Product datasheet for **CF500506**

VMAT2 (SLC18A2) Mouse Monoclonal Antibody [Clone ID: OTI9E11]

Product data:

Product Type:	Primary Antibodies
Clone Name:	OTI9E11
Applications:	FC, IF, IHC, WB
Recommended Dilution:	WB 1:2000, IHC 1:50, IF 1:100, FLOW 1:100
Reactivity:	Human, Mouse, Rat
Host:	Mouse
Isotype:	IgG1
Clonality:	Monoclonal
Immunogen:	Full-length protein expressed in 293T cell transfected with human SLC18A2 expression vector .
Formulation:	Lyophilized powder (original buffer 1X PBS, pH 7.3, 8% trehalose)
Reconstitution Method:	For reconstitution, we recommend adding 100uL distilled water to a final antibody concentration of about 1 mg/mL. To use this carrier-free antibody for conjugation experiment, we strongly recommend performing another round of desalting process. (OriGene recommends Zeba Spin Desalting Columns, 7KMWCO from Thermo Scientific)
Purification:	Purified from mouse ascites fluids or tissue culture supernatant by affinity chromatography (protein A/G)
Conjugation:	Unconjugated
Storage:	Store at -20°C as received.
Stability:	Stable for 12 months from date of receipt.
Predicted Protein Size:	55.7 kDa
Gene Name:	solute carrier family 18 member A2
Database Link:	NP_003045 Entrez Gene 25549 Rat Entrez Gene 214084 Mouse Entrez Gene 6571 Human Q05940



[View online »](#)

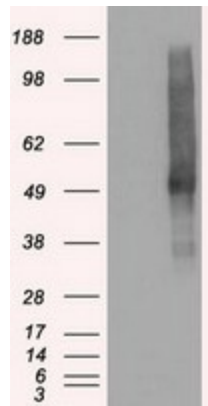
Background: The vesicular monoamine transporter acts to accumulate cytosolic monoamines into synaptic vesicles, using the proton gradient maintained across the synaptic vesicular membrane. Its proper function is essential to the correct activity of the monoaminergic systems that have been implicated in several human neuropsychiatric disorders. The transporter is a site of action of important drugs, including reserpine and tetrabenazine.

Synonyms: SVAT; SVMT; VAT2; VMAT2

Protein Families: Transmembrane

Protein Pathways: Parkinson's disease

Product images:



HEK293T cells were transfected with the pCMV6-ENTRY control (Cat# [PS100001], Left lane) or pCMV6-ENTRY SLC18A2 (Cat# [RC221342], Right lane) cDNA for 48 hrs and lysed. Equivalent amounts of cell lysates (5 ug per lane) were separated by SDS-PAGE and immunoblotted with anti-SLC18A2 (Cat# [TA500506]). Positive lysates [LY401066] (100ug) and [LC401066] (20ug) can be purchased separately from OriGene.

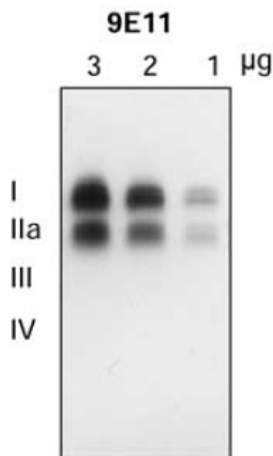
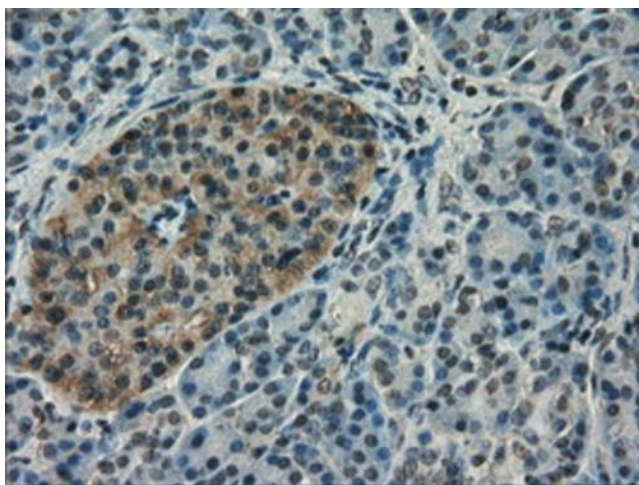
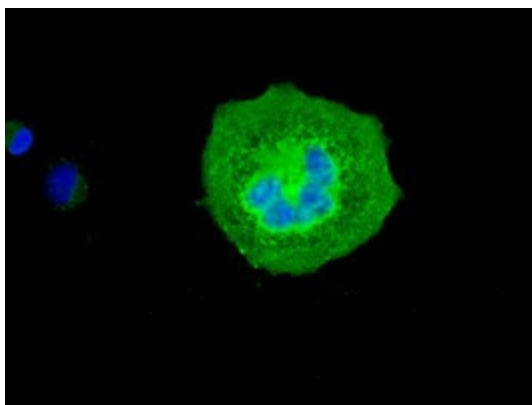


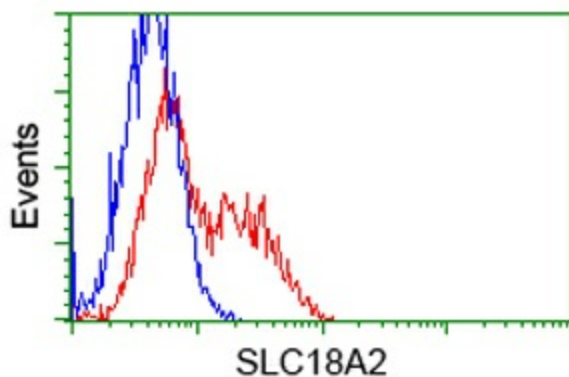
Figure from citation: Western Blot of SLC18A2 protein level by using anti-SLC18A2 (9E11) antibody in the striatum of autopsied human brain. [View Citation](#)



Immunohistochemical staining of paraffin-embedded Human pancreas tissue within the normal limits using anti-SLC18A2 mouse monoclonal antibody. Heat-induced epitope retrieval by EDTA solution buffer pH 8.0 at 120°C for 3 min.



Anti-SLC18A2 mouse monoclonal antibody ([TA500506]) immunofluorescent staining of COS7 cells transiently transfected by pCMV6-ENTRY SLC18A2 ([RC221342]).



HEK293T cells transfected with either [RC221342] overexpress plasmid (Red) or empty vector control plasmid (Blue) were immunostained by anti-SLC18A2 antibody ([TA500506]), and then analyzed by flow cytometry.