

Product datasheet for **CF500462**

B Raf (BRAF) Mouse Monoclonal Antibody [Clone ID: OTI4C11]

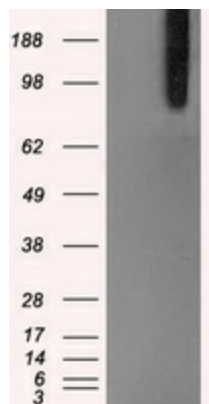
Product data:

Product Type:	Primary Antibodies
Clone Name:	OTI4C11
Applications:	ELISA, IHC, IP, WB
Recommended Dilution:	WB 1:2000
Reactivity:	Human, Mouse, Rat, Dog
Host:	Mouse
Isotype:	IgG1
Clonality:	Monoclonal
Immunogen:	Full-length protein expressed in 293T cell transfected with human BRAF expression vector
Formulation:	Lyophilized powder (original buffer 1X PBS, pH 7.3, 8% trehalose)
Reconstitution Method:	For reconstitution, we recommend adding 100uL distilled water to a final antibody concentration of about 1 mg/mL. To use this carrier-free antibody for conjugation experiment, we strongly recommend performing another round of desalting process. (OriGene recommends Zeba Spin Desalting Columns, 7KMWCO from Thermo Scientific)
Purification:	Purified from mouse ascites fluids or tissue culture supernatant by affinity chromatography (protein A/G)
Conjugation:	Unconjugated
Storage:	Store at -20°C as received.
Stability:	Stable for 12 months from date of receipt.
Predicted Protein Size:	84.4 kDa
Gene Name:	Homo sapiens B-Raf proto-oncogene, serine/threonine kinase (BRAF), transcript variant 1, mRNA.
Database Link:	NP_004324 Entrez Gene 109880 MouseEntrez Gene 114486 RatEntrez Gene 475526 DogEntrez Gene 673 Human P15056

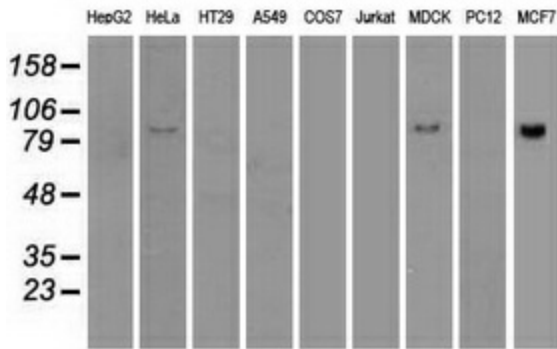


[View online »](#)

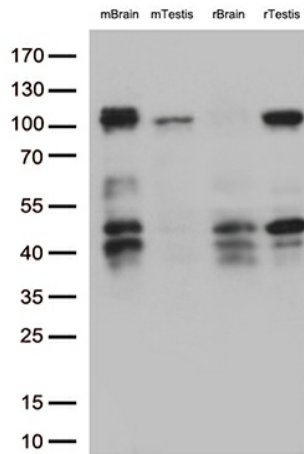
Background:	This gene encodes a protein belonging to the raf/mil family of serine/threonine protein kinases. This protein plays a role in regulating the MAP kinase/ERKs signaling pathway, which affects cell division, differentiation, and secretion. Mutations in this gene are associated with cardiofaciocutaneous syndrome, a disease characterized by heart defects, mental retardation and a distinctive facial appearance. Mutations in this gene have also been associated with various cancers, including non-Hodgkin lymphoma, colorectal cancer, malignant melanoma, thyroid carcinoma, non-small cell lung carcinoma, and adenocarcinoma of lung. A pseudogene, which is located on chromosome X, has been identified for this gene. [provided by RefSeq]
Synonyms:	B-raf; B-RAF1; BRAF1; NS7; RAFB1
Protein Families:	Druggable Genome, Protein Kinase
Protein Pathways:	Acute myeloid leukemia, Bladder cancer, Chemokine signaling pathway, Chronic myeloid leukemia, Colorectal cancer, Endometrial cancer, ErbB signaling pathway, Focal adhesion, Glioma, Insulin signaling pathway, Long-term depression, Long-term potentiation, MAPK signaling pathway, Melanoma, mTOR signaling pathway, Natural killer cell mediated cytotoxicity, Neurotrophin signaling pathway, Non-small cell lung cancer, Pancreatic cancer, Pathways in cancer, Progesterone-mediated oocyte maturation, Prostate cancer, Regulation of actin cytoskeleton, Renal cell carcinoma, Thyroid cancer, Vascular smooth muscle contraction

Product images:

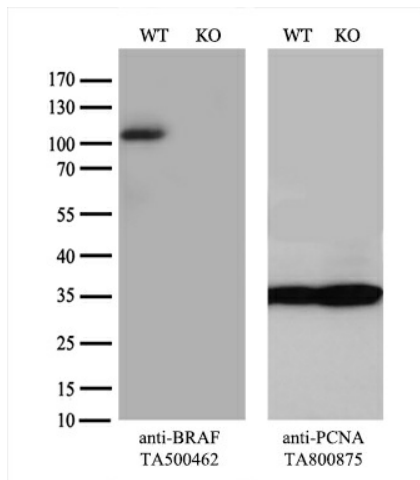
HEK293T cells were transfected with the pCMV6-ENTRY control (Left lane) or pCMV6-ENTRY BRAF ([RC211013], Right lane) cDNA for 48 hrs and lysed. Equivalent amounts of cell lysates (5 ug per lane) were separated by SDS-PAGE and immunoblotted with anti-BRAF. Positive lysates [LY401382] (100ug) and [LC401382] (20ug) can be purchased separately from OriGene.



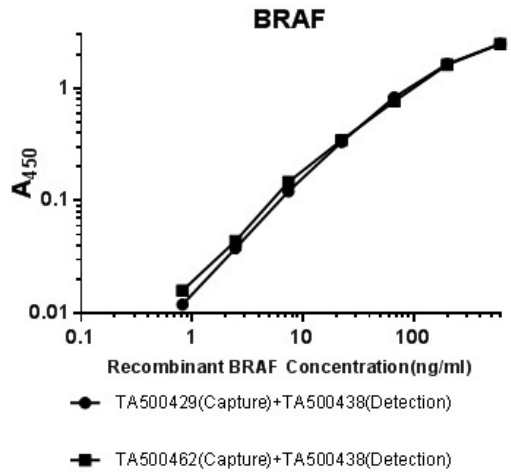
Western blot analysis of extracts (35ug) from 9 different cell lines by using anti-anti-BRAF monoclonal antibody.



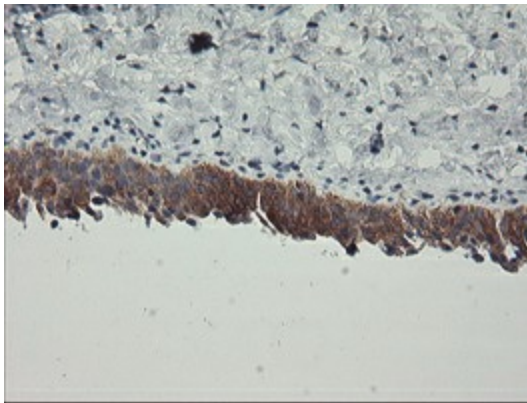
Western blot analysis of extracts (35ug) from 4 tissue lysates by using anti-BRAF monoclonal antibody (1:500).



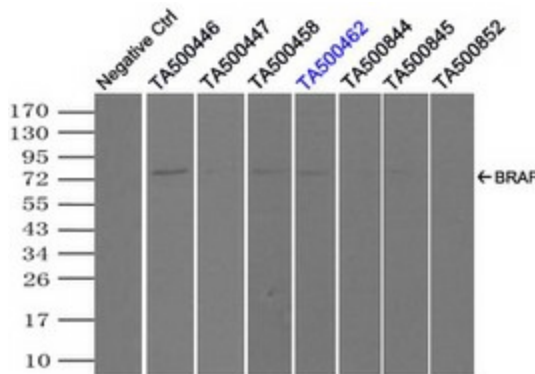
Equivalent amounts of cell lysates (10 ug per lane) of wild-type HeLa cells (WT, Cat# LC810HELA) and BRAF-Knockout HeLa cells (KO, Cat# [LC835315]) were separated by SDS-PAGE and immunoblotted with anti-BRAF monoclonal antibody [TA500462] (1:500). Then the blotted membrane was stripped and reprobed with anti-PCNA antibody as a loading control.



Standard curve for ELISA analysis with BRAF recombinant protein (dilution range from 0.8ng/ml to 600ng/ml) using BRAF Capture Antibody (Cat# [TA500429]/[TA500462]) at 5ug/ml and HRP conjugated BRAF Detection mAb (Cat# [TA500438]) at 0.03ug/ml.



Immunohistochemical staining of paraffin-embedded Human bladder tissue within the normal limits using anti-BRAF mouse monoclonal antibody. ([TA500462])



Immunoprecipitation (IP) of BRAF by using TrueMab monoclonal anti-BRAF antibodies (Negative control: IP without adding anti-BRAF antibody.). For each experiment, 500ul of DDK tagged BRAF overexpression lysates (at 1:5 dilution with HEK293T lysate), 2ug of anti-BRAF antibody and 20ul (0.1mg) of goat anti-mouse conjugated magnetic beads were mixed and incubated overnight. After extensive wash to remove any non-specific binding, the immunoprecipitated products were analyzed with rabbit anti-DDK polyclonal antibody.