

## Product datasheet for **CF500450**

### **MADM (NRBP1) Mouse Monoclonal Antibody [Clone ID: OTI4F2]**

#### **Product data:**

<b>Product Type:</b>	Primary Antibodies
<b>Clone Name:</b>	OTI4F2
<b>Applications:</b>	FC, IP, WB
<b>Recommended Dilution:</b>	WB 1:1000, FLOW 1:100, IP 2ug/500ul
<b>Reactivity:</b>	Human, Mouse, Rat
<b>Host:</b>	Mouse
<b>Isotype:</b>	IgG1
<b>Clonality:</b>	Monoclonal
<b>Immunogen:</b>	Full-length protein expressed in 293T cell transfected with human NRBP1 expression vector
<b>Formulation:</b>	Lyophilized powder (original buffer 1X PBS, pH 7.3, 8% trehalose)
<b>Reconstitution Method:</b>	For reconstitution, we recommend adding 100uL distilled water to a final antibody concentration of about 1 mg/mL. To use this carrier-free antibody for conjugation experiment, we strongly recommend performing another round of desalting process. (OriGene recommends Zeba Spin Desalting Columns, 7KMWCO from Thermo Scientific)
<b>Purification:</b>	Purified from mouse ascites fluids or tissue culture supernatant by affinity chromatography (protein A/G)
<b>Conjugation:</b>	Unconjugated
<b>Storage:</b>	Store at -20°C as received.
<b>Stability:</b>	Stable for 12 months from date of receipt.
<b>Predicted Protein Size:</b>	59.8 kDa
<b>Gene Name:</b>	nuclear receptor binding protein 1
<b>Database Link:</b>	<a href="#">NP_037524</a> <a href="#">Entrez Gene 192292 MouseEntrez Gene 619579 RatEntrez Gene 29959 Human Q9UHY1</a>
<b>Background:</b>	May play a role in subcellular trafficking between the endoplasmic reticulum and Golgi apparatus through interactions with the Rho-type GTPases. Binding to the NS3 protein of dengue virus type 2 appears to subvert this activity into the alteration of the

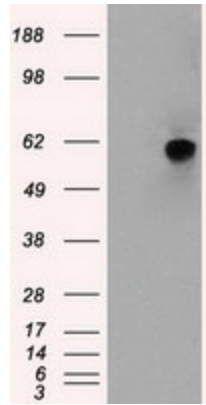


[View online »](#)

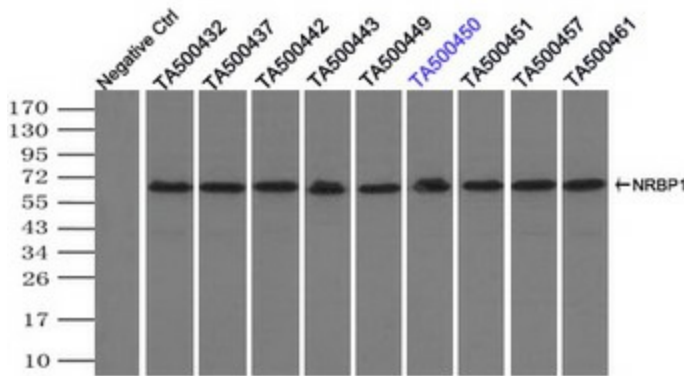
**Synonyms:** BCON3; MADM; MUDPNP; NRBP

**Protein Families:** Druggable Genome, Protein Kinase

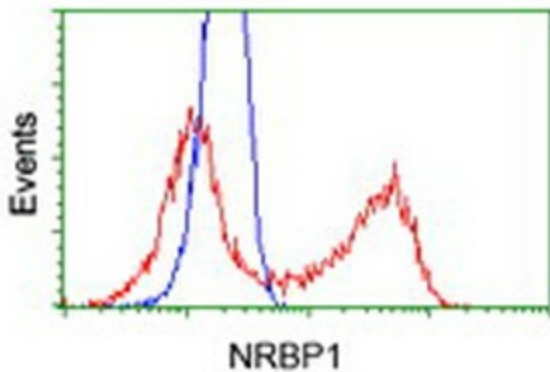
**Product images:**



HEK293T cells were transfected with the pCMV6-ENTRY control (Left lane) or pCMV6-ENTRY NRBP1 ([RC200107], Right lane) cDNA for 48 hrs and lysed. Equivalent amounts of cell lysates (5 ug per lane) were separated by SDS-PAGE and immunoblotted with anti-NRBP1. Positive lysates [LY415614] (100ug) and [LC415614] (20ug) can be purchased separately from OriGene.



Immunoprecipitation (IP) of NRBP1 by using TrueMab monoclonal anti-NRBP1 antibodies (Negative control: IP without adding anti-NRBP1 antibody.). For each experiment, 500ul of DDK tagged NRBP1 overexpression lysates (at 1:5 dilution with HEK293T lysate), 2ug of anti-NRBP1 antibody and 20ul (0.1mg) of goat anti-mouse conjugated magnetic beads were mixed and incubated overnight. After extensive wash to remove any non-specific binding, the immunoprecipitated products were analyzed with rabbit anti-DDK polyclonal antibody.



HEK293T cells transfected with either [RC200107] overexpress plasmid (Red) or empty vector control plasmid (Blue) were immunostained by anti-NRBP1 antibody ([TA500450]), and then analyzed by flow cytometry.