

Product datasheet for **CF500442**

MADM (NRBP1) Mouse Monoclonal Antibody [Clone ID: OTI7C5]

Product data:

Product Type:	Primary Antibodies
Clone Name:	OTI7C5
Applications:	FC, IHC, IP, WB
Recommended Dilution:	WB 1:1000~2000, IHC 1:50, FLOW 1:100, IP 2ug/500ul
Reactivity:	Human, Dog, Rat, Monkey, Mouse
Host:	Mouse
Isotype:	IgG2b
Clonality:	Monoclonal
Immunogen:	Full-length protein expressed in 293T cell transfected with human NRBP1 expression vector
Formulation:	Lyophilized powder (original buffer 1X PBS, pH 7.3, 8% trehalose)
Reconstitution Method:	For reconstitution, we recommend adding 100uL distilled water to a final antibody concentration of about 1 mg/mL. To use this carrier-free antibody for conjugation experiment, we strongly recommend performing another round of desalting process. (OriGene recommends Zeba Spin Desalting Columns, 7KMWCO from Thermo Scientific)
Purification:	Purified from mouse ascites fluids or tissue culture supernatant by affinity chromatography (protein A/G)
Conjugation:	Unconjugated
Storage:	Store at -20°C as received.
Stability:	Stable for 12 months from date of receipt.
Predicted Protein Size:	59.8 kDa
Gene Name:	Homo sapiens nuclear receptor binding protein 1 (NRBP1), transcript variant 1, mRNA.
Database Link:	NP_037524 Entrez Gene 192292 MouseEntrez Gene 619579 RatEntrez Gene 475704 DogEntrez Gene 700821 MonkeyEntrez Gene 29959 Human Q9UHY1
Background:	May play a role in subcellular trafficking between the endoplasmic reticulum and Golgi apparatus through interactions with the Rho-type GTPases. Binding to the NS3 protein of dengue virus type 2 appears to subvert this activity into the alteration of the

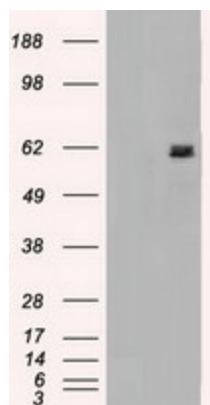


[View online »](#)

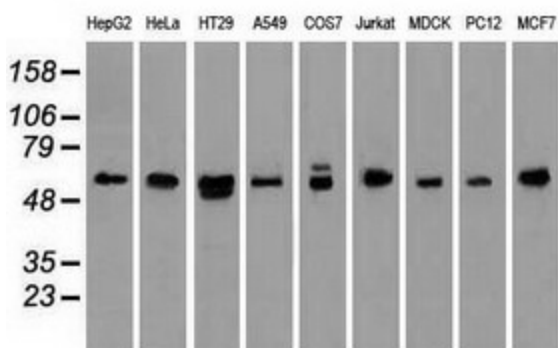
Synonyms: BCON3; MADM; MUDPNP; NRBP

Protein Families: Druggable Genome, Protein Kinase

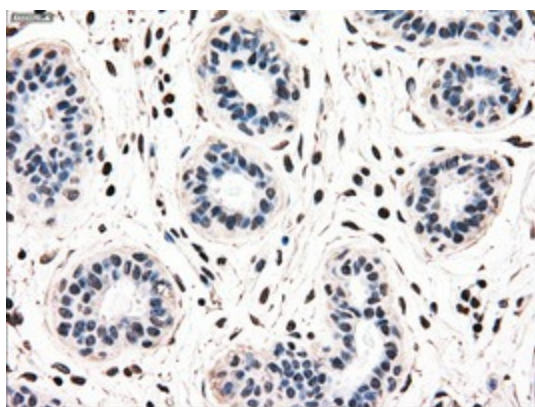
Product images:



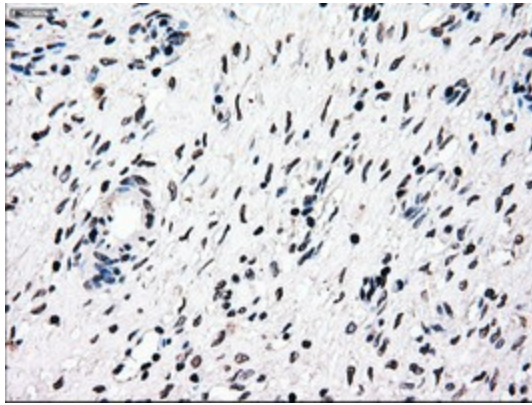
HEK293T cells were transfected with the pCMV6-ENTRY control (Left lane) or pCMV6-ENTRY NRBP1 ([RC200107], Right lane) cDNA for 48 hrs and lysed. Equivalent amounts of cell lysates (5 ug per lane) were separated by SDS-PAGE and immunoblotted with anti-NRBP1. Positive lysates [LY415614] (100ug) and [LC415614] (20ug) can be purchased separately from OriGene.



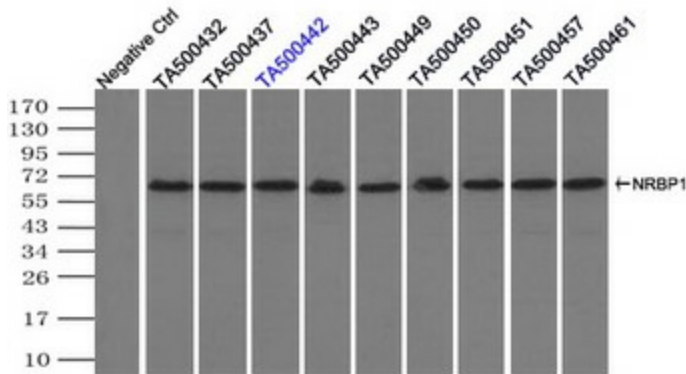
Western blot analysis of extracts (35ug) from 9 different cell lines by using anti-NRBP1 monoclonal antibody.



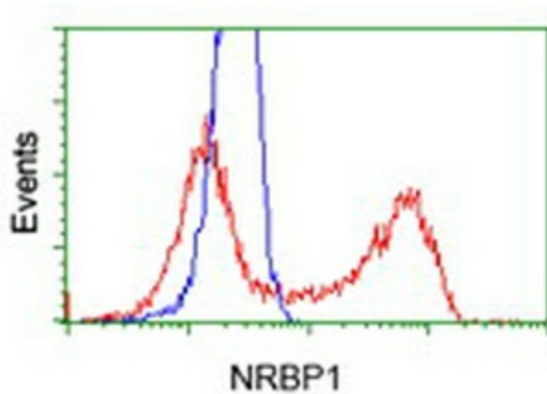
Immunohistochemical staining of paraffin-embedded Human breast tissue within the normal limits using anti-NRBP1 mouse monoclonal antibody. (Heat-induced epitope retrieval by 10mM citric buffer, pH6.0, 100°C for 10min, [TA500442])



Immunohistochemical staining of paraffin-embedded Human Ovary tissue within the normal limits using anti-NRBP1 mouse monoclonal antibody. (Heat-induced epitope retrieval by 10mM citric buffer, pH6.0, 100°C for 10min, [TA500442])



Immunoprecipitation (IP) of NRBP1 by using TrueMab monoclonal anti-NRBP1 antibodies (Negative control: IP without adding anti-NRBP1 antibody.). For each experiment, 500ul of DDK tagged NRBP1 overexpression lysates (at 1:5 dilution with HEK293T lysate), 2ug of anti-NRBP1 antibody and 20ul (0.1mg) of goat anti-mouse conjugated magnetic beads were mixed and incubated overnight. After extensive wash to remove any non-specific binding, the immunoprecipitated products were analyzed with rabbit anti-DDK polyclonal antibody.



HEK293T cells transfected with either [RC200107] overexpress plasmid (Red) or empty vector control plasmid (Blue) were immunostained by anti-NRBP1 antibody ([TA500442]), and then analyzed by flow cytometry.