

## Product datasheet for **CF500440**

### **B Raf (BRAF) Mouse Monoclonal Antibody [Clone ID: OTI3A7]**

#### **Product data:**

<b>Product Type:</b>	Primary Antibodies
<b>Clone Name:</b>	OTI3A7
<b>Applications:</b>	IF, IP, WB
<b>Recommended Dilution:</b>	WB 1:2000; IF 1:100
<b>Reactivity:</b>	Human, Dog, Rat, Monkey, Mouse
<b>Host:</b>	Mouse
<b>Isotype:</b>	IgG2a
<b>Clonality:</b>	Monoclonal
<b>Immunogen:</b>	Full-length protein expressed in 293T cell transfected with human BRAF expression vector
<b>Formulation:</b>	Lyophilized powder (original buffer 1X PBS, pH 7.3, 8% trehalose)
<b>Reconstitution Method:</b>	For reconstitution, we recommend adding 100uL distilled water to a final antibody concentration of about 1 mg/mL. To use this carrier-free antibody for conjugation experiment, we strongly recommend performing another round of desalting process. (OriGene recommends Zeba Spin Desalting Columns, 7KMWCO from Thermo Scientific)
<b>Purification:</b>	Purified from mouse ascites fluids or tissue culture supernatant by affinity chromatography (protein A/G)
<b>Conjugation:</b>	Unconjugated
<b>Storage:</b>	Store at -20°C as received.
<b>Stability:</b>	Stable for 12 months from date of receipt.
<b>Predicted Protein Size:</b>	84.4 kDa
<b>Gene Name:</b>	B-Raf proto-oncogene, serine/threonine kinase
<b>Database Link:</b>	<a href="#">NP_004324</a> <a href="#">Entrez Gene 109880</a> <a href="#">MouseEntrez Gene 114486</a> <a href="#">RatEntrez Gene 475526</a> <a href="#">DogEntrez Gene 693554</a> <a href="#">MonkeyEntrez Gene 673</a> <a href="#">Human P15056</a>



[View online »](#)

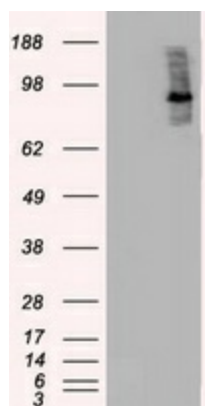
**Background:** This gene encodes a protein belonging to the raf/mil family of serine/threonine protein kinases. This protein plays a role in regulating the MAP kinase/ERKs signaling pathway, which affects cell division, differentiation, and secretion. Mutations in this gene are associated with cardiofaciocutaneous syndrome, a disease characterized by heart defects, mental retardation and a distinctive facial appearance. Mutations in this gene have also been associated with various cancers, including non-Hodgkin lymphoma, colorectal cancer, malignant melanoma, thyroid carcinoma, non-small cell lung carcinoma, and adenocarcinoma of lung. A pseudogene, which is located on chromosome X, has been identified for this gene.

**Synonyms:** B-raf; B-RAF1; BRAF1; NS7; RAFB1

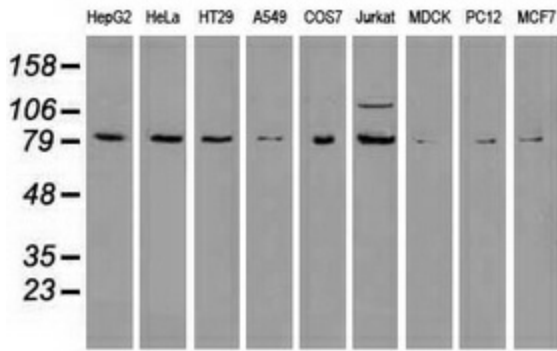
**Protein Families:** Druggable Genome, Protein Kinase

**Protein Pathways:** Acute myeloid leukemia, Bladder cancer, Chemokine signaling pathway, Chronic myeloid leukemia, Colorectal cancer, Endometrial cancer, ErbB signaling pathway, Focal adhesion, Glioma, Insulin signaling pathway, Long-term depression, Long-term potentiation, MAPK signaling pathway, Melanoma, mTOR signaling pathway, Natural killer cell mediated cytotoxicity, Neurotrophin signaling pathway, Non-small cell lung cancer, Pancreatic cancer, Pathways in cancer, Progesterone-mediated oocyte maturation, Prostate cancer, Regulation of actin cytoskeleton, Renal cell carcinoma, Thyroid cancer, Vascular smooth muscle contraction

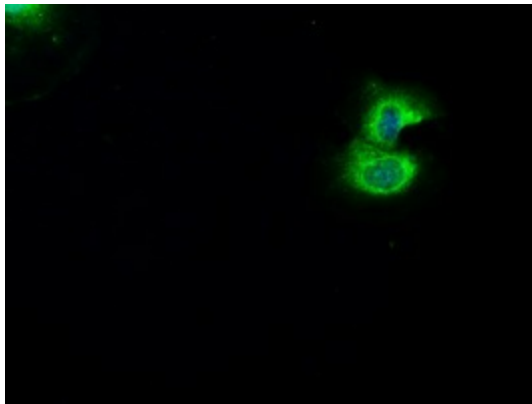
### Product images:



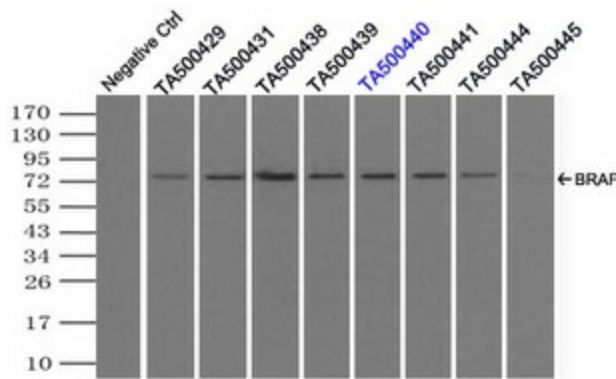
HEK293T cells were transfected with the pCMV6-ENTRY control (Left lane) or pCMV6-ENTRY BRAF [RC211013], Right lane) cDNA for 48 hrs and lysed. Equivalent amounts of cell lysates (5 ug per lane) were separated by SDS-PAGE and immunoblotted with anti-BRAF. Positive lysates [LY401382] (100ug) and [LC401382] (20ug) can be purchased separately from OriGene.



Western blot analysis of extracts (35ug) from 9 different cell lines by using anti-anti-BRAF monoclonal antibody.



Anti-BRAF mouse monoclonal antibody ([TA500440]) immunofluorescent staining of COS7 cells transiently transfected by pCMV6-ENTRY BRAF ([RC211013]).



Immunoprecipitation (IP) of BRAF by using TrueMab monoclonal anti-BRAF antibodies (Negative control: IP without adding anti-BRAF antibody.). For each experiment, 500ul of DDK tagged BRAF overexpression lysates (at 1:5 dilution with HEK293T lysate), 2ug of anti-BRAF antibody and 20ul (0.1mg) of goat anti-mouse conjugated magnetic beads were mixed and incubated overnight. After extensive wash to remove any non-specific binding, the immunoprecipitated products were analyzed with rabbit anti-DDK polyclonal antibody.