

## Product datasheet for **CF500433**

### MRI1 Mouse Monoclonal Antibody [Clone ID: OTI6G9]

#### Product data:

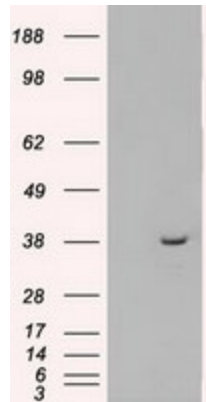
Product Type:	Primary Antibodies
Clone Name:	OTI6G9
Applications:	IF, IHC, WB
Recommended Dilution:	WB 1:1000~2000, IHC 1:50, IF 1:100
Reactivity:	Human, Mouse, Rat
Host:	Mouse
Isotype:	IgG1
Clonality:	Monoclonal
Immunogen:	Full length human recombinant protein of human MRI1 (NP_115661) produced in HEK293T cell.
Formulation:	Lyophilized powder (original buffer 1X PBS, pH 7.3, 8% trehalose)
Reconstitution Method:	For reconstitution, we recommend adding 100uL distilled water to a final antibody concentration of about 1 mg/mL. To use this carrier-free antibody for conjugation experiment, we strongly recommend performing another round of desalting process. (OriGene recommends Zeba Spin Desalting Columns, 7KMWCO from Thermo Scientific)
Purification:	Purified from mouse ascites fluids or tissue culture supernatant by affinity chromatography (protein A/G)
Conjugation:	Unconjugated
Storage:	Store at -20°C as received.
Stability:	Stable for 12 months from date of receipt.
Predicted Protein Size:	39.1 kDa
Gene Name:	methylthioribose-1-phosphate isomerase 1
Database Link:	<a href="#">NP_001026897</a> <a href="#">Entrez Gene 84245 Human</a> <a href="#">Q9BV20</a>
Background:	Catalyzes the interconversion of methylthioribose-1-phosphate (MTR-1-P) into methylthioribulose-1-phosphate (MTRu-1-P) (By similarity).



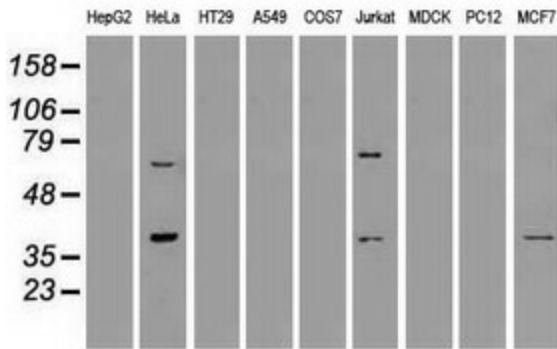
[View online »](#)

Synonyms: MRDI; MTNA; Ypr118w

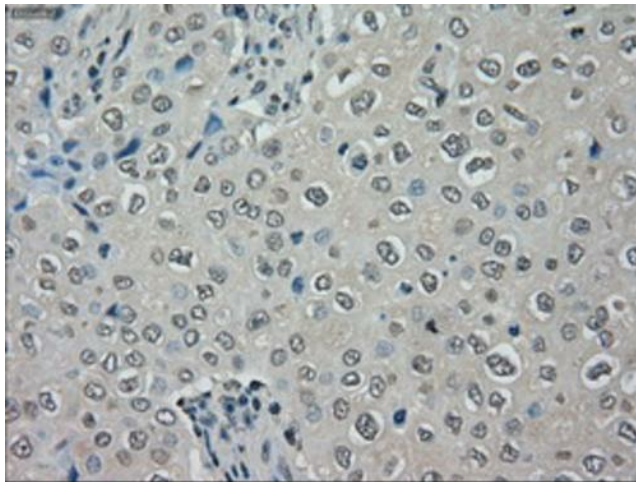
**Product images:**



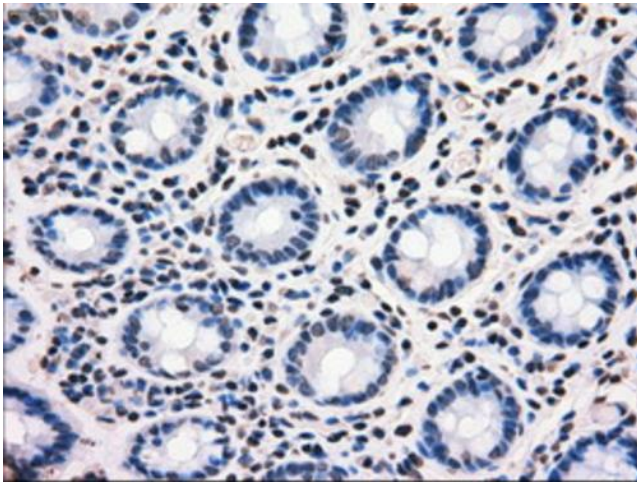
HEK293T cells were transfected with the pCMV6-ENTRY control (Cat# [PS100001], Left lane) or pCMV6-ENTRY MR11 (Cat# [RC200993], Right lane) cDNA for 48 hrs and lysed. Equivalent amounts of cell lysates (5 ug per lane) were separated by SDS-PAGE and immunoblotted with anti-MR11 (Cat# [TA500433]). Positive lysates [LY422176] (100ug) and [LC422176] (20ug) can be purchased separately from OriGene.



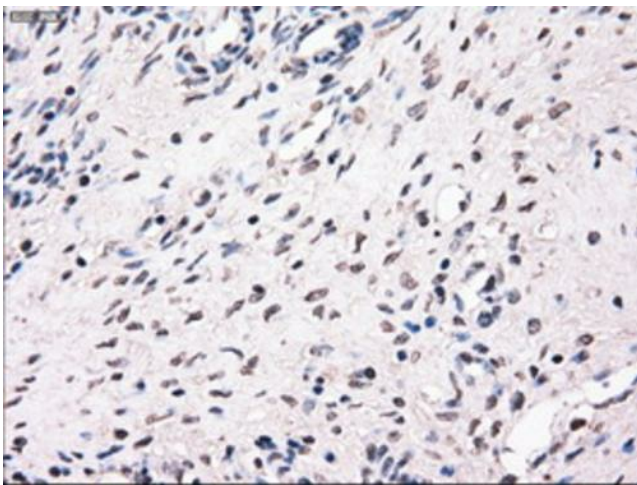
Western blot analysis of extracts (35ug) from 9 different cell lines by using anti-MR11 monoclonal antibody.



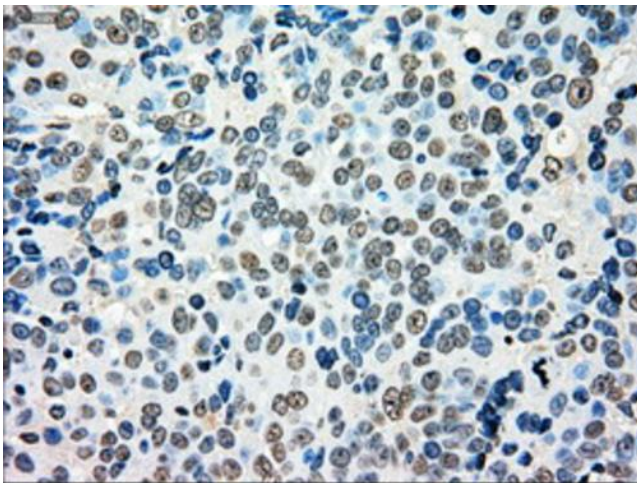
Immunohistochemical staining of paraffin-embedded Adenocarcinoma of Human breast tissue using anti-MR11 mouse monoclonal antibody. (Heat-induced epitope retrieval by 10mM citric buffer, pH6.0, 100°C for 10min, [TA500433])



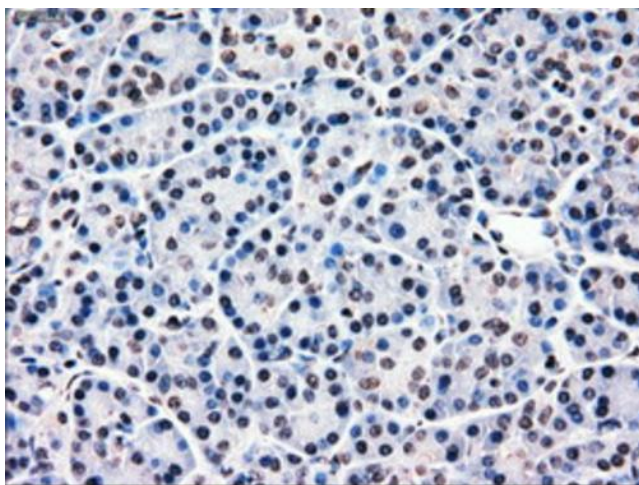
Immunohistochemical staining of paraffin-embedded Human colon tissue within the normal limits using anti-MRI1 mouse monoclonal antibody. (Heat-induced epitope retrieval by 10mM citric buffer, pH6.0, 100°C for 10min, [TA500433])



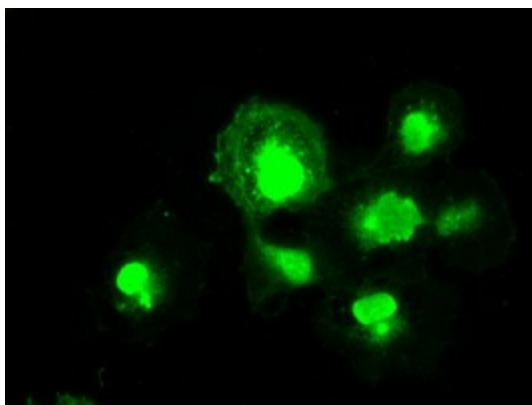
Immunohistochemical staining of paraffin-embedded Human Ovary tissue within the normal limits using anti-MRI1 mouse monoclonal antibody. (Heat-induced epitope retrieval by 10mM citric buffer, pH6.0, 100°C for 10min, [TA500433])



Immunohistochemical staining of paraffin-embedded Adenocarcinoma of Human ovary tissue using anti-MRI1 mouse monoclonal antibody. (Heat-induced epitope retrieval by 10mM citric buffer, pH6.0, 100°C for 10min, [TA500433])



Immunohistochemical staining of paraffin-embedded Human pancreas tissue within the normal limits using anti-MRI1 mouse monoclonal antibody. (Heat-induced epitope retrieval by 10mM citric buffer, pH6.0, 100°C for 10min, [TA500433])



Anti-MRI1 mouse monoclonal antibody ([TA500433]) immunofluorescent staining of COS7 cells transiently transfected by pCMV6-ENTRY MRI1 ([RC200993]).