

## Product datasheet for **CF500425**

### Melanoma gp100 (PMEL) Mouse Monoclonal Antibody [Clone ID: OTI7E3]

#### Product data:

Product Type:	Primary Antibodies
Clone Name:	OTI7E3
Applications:	FC, IHC
Recommended Dilution:	FLOW 1:100, IHC: 1:150
Reactivity:	Human
Host:	Mouse
Isotype:	IgG2b
Clonality:	Monoclonal
Immunogen:	Full length human recombinant protein of human SILV (NP_008859) produced in HEK293T cell.
Formulation:	Lyophilized powder (original buffer 1X PBS, pH 7.3, 8% trehalose)
Reconstitution Method:	For reconstitution, we recommend adding 100uL distilled water to a final antibody concentration of about 1 mg/mL. To use this carrier-free antibody for conjugation experiment, we strongly recommend performing another round of desalting process. (OriGene recommends Zeba Spin Desalting Columns, 7KMWCO from Thermo Scientific)
Purification:	Purified from mouse ascites fluids or tissue culture supernatant by affinity chromatography (protein A/G)
Conjugation:	Unconjugated
Storage:	Store at -20°C as received.
Stability:	Stable for 12 months from date of receipt.
Predicted Protein Size:	70.3 kDa
Gene Name:	premelanosome protein
Database Link:	<a href="#">NP_008859</a> <a href="#">Entrez Gene 6490 Human</a> <a href="#">P40967</a>



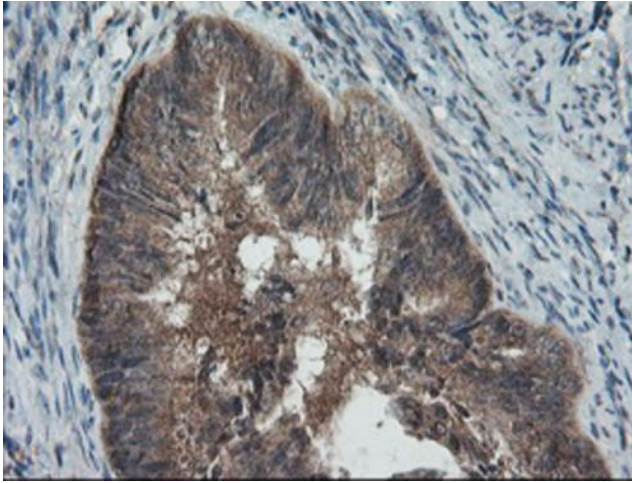
[View online »](#)

**Background:** Could be a melanogenic enzyme. Could represent an oncofetal self-antigen that is normally expressed at low levels in quiescent adult melanocytes but overexpressed by proliferating neonatal melanocytes and during tumor growth. Release of the soluble form, ME20-S, could protect tumor cells from antibody mediated immunity.

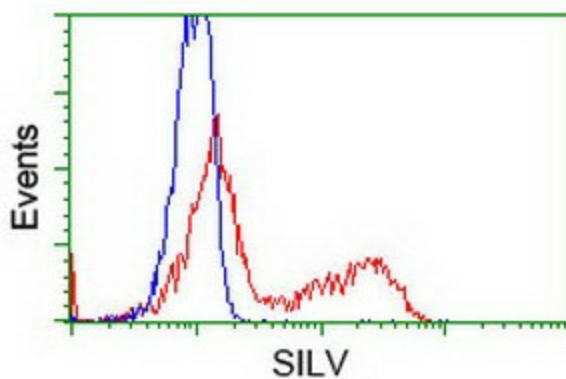
**Synonyms:** D12S53E; gp100; ME20; ME20-M; ME20M; P1; P100; PMEL17; SI; SIL; SILV

**Protein Families:** Secreted Protein, Transmembrane

**Product images:**



Immunohistochemical staining of paraffin-embedded Adenocarcinoma of Human endometrium tissue using anti-SILV mouse monoclonal antibody. ([TA500425]). Heat-induced epitope retrieval by EDTA solution buffer pH 8.0 at 120°C for 3 min.



HEK293T cells transfected with either [RC200663] overexpress plasmid (Red) or empty vector control plasmid (Blue) were immunostained by anti-SILV antibody ([TA500425]), and then analyzed by flow cytometry.