

Product datasheet for **CF500407**

SSB Mouse Monoclonal Antibody [Clone ID: OTI9D6]

Product data:

Product Type:	Primary Antibodies
Clone Name:	OTI9D6
Applications:	FC, IF, IHC, IP, WB
Recommended Dilution:	WB 1:1000~2000, IHC 1:150, IF 1:50~100, FLOW 1:100, IP 2ug/500ul
Reactivity:	Human, Dog, Monkey
Host:	Mouse
Isotype:	IgG3
Clonality:	Monoclonal
Immunogen:	Full-length protein expressed in 293T cell transfected with human SSB expression vector
Formulation:	Lyophilized powder (original buffer 1X PBS, pH 7.3, 8% trehalose)
Reconstitution Method:	For reconstitution, we recommend adding 100uL distilled water to a final antibody concentration of about 1 mg/mL. To use this carrier-free antibody for conjugation experiment, we strongly recommend performing another round of desalting process. (OriGene recommends Zeba Spin Desalting Columns, 7KMWCO from Thermo Scientific)
Purification:	Purified from mouse ascites fluids or tissue culture supernatant by affinity chromatography (protein A/G)
Conjugation:	Unconjugated
Storage:	Store at -20°C as received.
Stability:	Stable for 12 months from date of receipt.
Predicted Protein Size:	46.8 kDa
Gene Name:	small RNA binding exonuclease protection factor La
Database Link:	NP_003133 Entrez Gene 478787 Dog Entrez Gene 710344 Monkey Entrez Gene 6741 Human P05455



[View online »](#)

Background:

La is involved in diverse aspects of RNA metabolism, including binding and protecting 3-prime UUU(H) elements of newly RNA polymerase III (see MIM 606007)-transcribed RNA, processing 5-prime and 3-prime ends of pre-tRNA precursors, acting as an RNA chaperone, and binding viral RNAs associated with hepatitis C virus. La protein was originally defined by its reactivity with autoantibodies from patients with Sjogren syndrome (MIM 270150) and systemic lupus erythematosus

Synonyms:

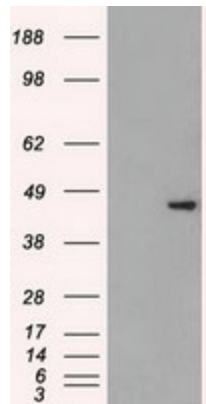
La; La/SSB; LARP3

Protein Families:

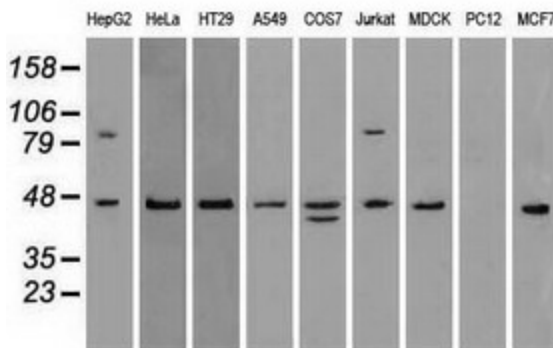
Stem cell - Pluripotency, Transcription Factors

Protein Pathways:

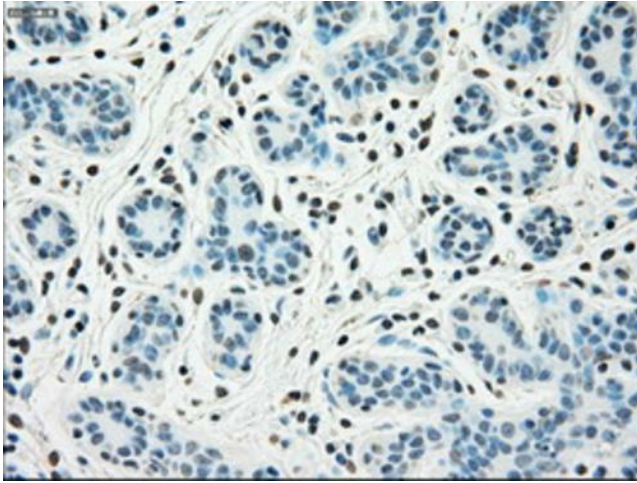
Systemic lupus erythematosus

Product images:


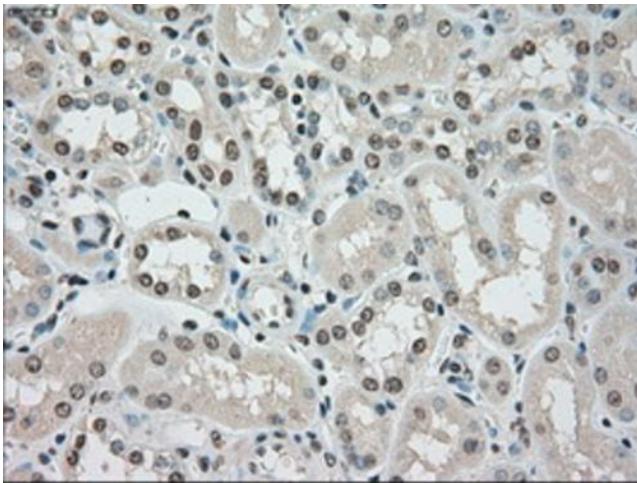
HEK293T cells were transfected with the pCMV6-ENTRY control (Left lane) or pCMV6-ENTRY SSB ([RC205013], Right lane) cDNA for 48 hrs and lysed. Equivalent amounts of cell lysates (5 ug per lane) were separated by SDS-PAGE and immunoblotted with anti-SSB. Positive lysates [LY401091] (100ug) and [LC401091] (20ug) can be purchased separately from OriGene.



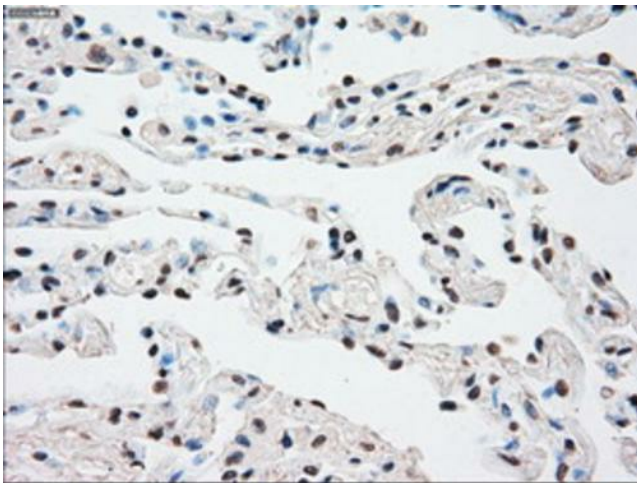
Western blot analysis of extracts (35ug) from 9 different cell lines by using anti-SSB monoclonal antibody.



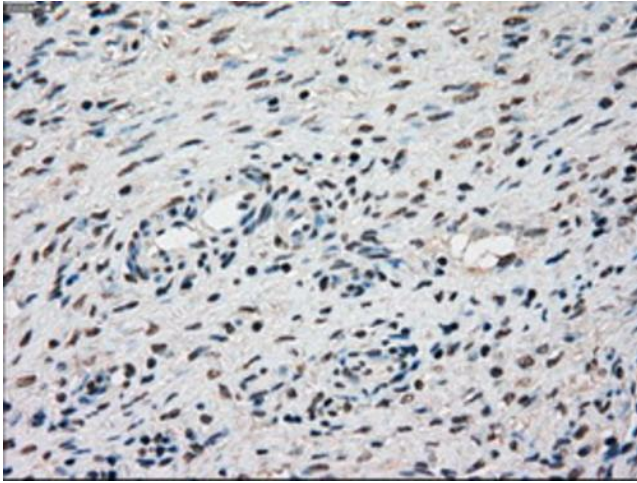
Immunohistochemical staining of paraffin-embedded Human breast tissue within the normal limits using anti-SSB mouse monoclonal antibody. Heat-induced epitope retrieval by EDTA solution buffer pH 8.0 at 120°C for 3 min.



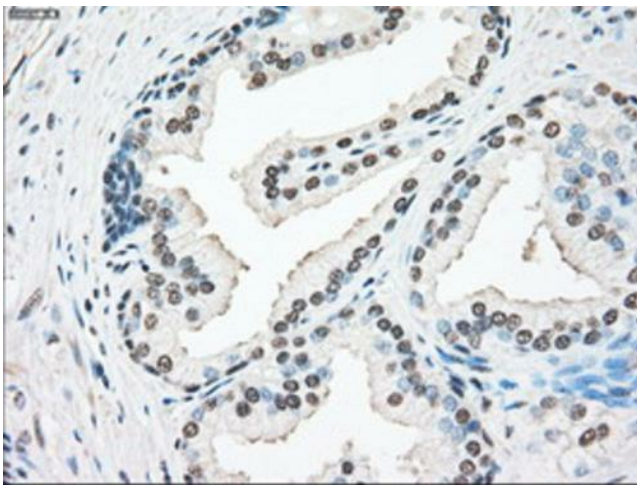
Immunohistochemical staining of paraffin-embedded Human Kidney tissue within the normal limits using anti-SSB mouse monoclonal antibody. Heat-induced epitope retrieval by EDTA solution buffer pH 8.0 at 120°C for 3 min.



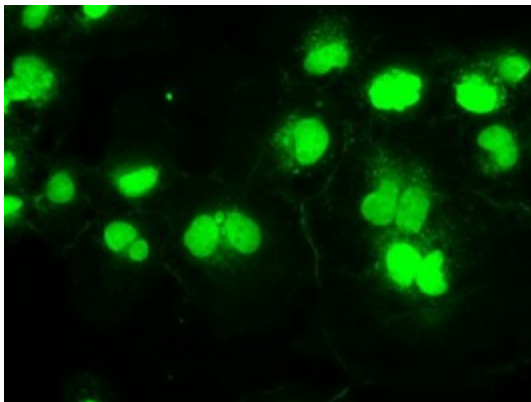
Immunohistochemical staining of paraffin-embedded Human lung tissue within the normal limits using anti-SSB mouse monoclonal antibody. Heat-induced epitope retrieval by EDTA solution buffer pH 8.0 at 120°C for 3 min.



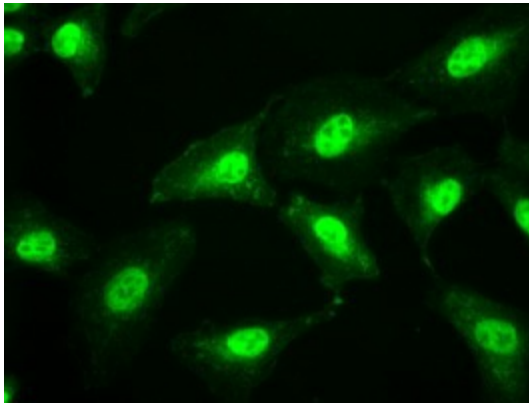
Immunohistochemical staining of paraffin-embedded Human Ovary tissue within the normal limits using anti-SSB mouse monoclonal antibody. Heat-induced epitope retrieval by EDTA solution buffer pH 8.0 at 120°C for 3 min.



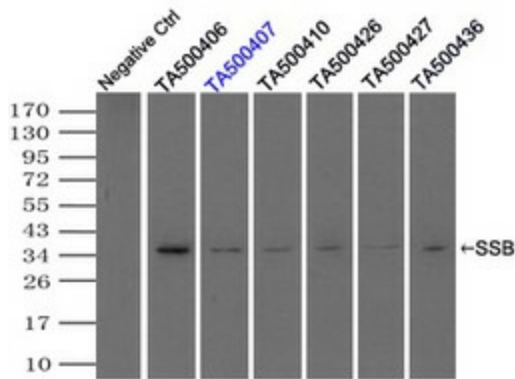
Immunohistochemical staining of paraffin-embedded Human prostate tissue within the normal limits using anti-SSB mouse monoclonal antibody. Heat-induced epitope retrieval by EDTA solution buffer pH 8.0 at 120°C for 3 min.



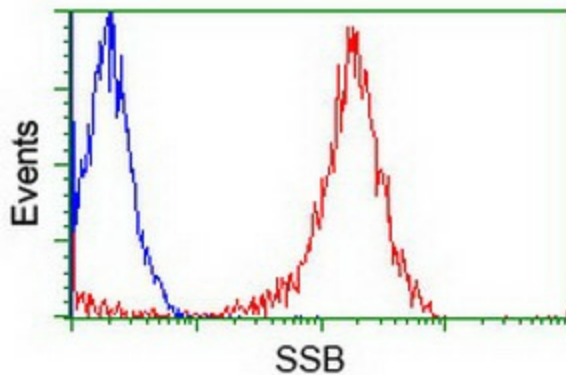
Anti-SSB mouse monoclonal antibody ([TA500407]) immunofluorescent staining of COS7 cells transiently transfected by pCMV6-ENTRY SSB ([RC205013]).



Immunofluorescent staining of A549 cells using anti-SSB mouse monoclonal antibody ([TA500407]).



Immunoprecipitation (IP) of SSB by using TrueMab monoclonal anti-SSB antibodies (Negative control: IP without adding anti-SSB antibody.). For each experiment, 500ul of DDK tagged SSB overexpression lysates (at 1:5 dilution with HEK293T lysate), 2ug of anti-SSB antibody and 20ul (0.1mg) of goat anti-mouse conjugated magnetic beads were mixed and incubated overnight. After extensive wash to remove any non-specific binding, the immuno-precipitated products were analyzed with rabbit anti-DDK polyclonal antibody.



Flow cytometric Analysis of Jurkat cells, using anti-SSB antibody ([TA500407]), (Red), compared to a nonspecific negative control antibody, (Blue).