

Product datasheet for **CF500402**

Melanoma gp100 (PMEL) Mouse Monoclonal Antibody [Clone ID: OT18A4]

Product data:

Product Type:	Primary Antibodies
Clone Name:	OT18A4
Applications:	IF, IHC, WB
Recommended Dilution:	WB 1:1000, IHC: 1:150
Reactivity:	Human, Monkey, Rat, Dog
Host:	Mouse
Isotype:	IgG2b
Clonality:	Monoclonal
Immunogen:	Full-length protein expressed in 293T cell transfected with human SILV expression vector
Formulation:	Lyophilized powder (original buffer 1X PBS, pH 7.3, 8% trehalose)
Reconstitution Method:	For reconstitution, we recommend adding 100uL distilled water to a final antibody concentration of about 1 mg/mL. To use this carrier-free antibody for conjugation experiment, we strongly recommend performing another round of desalting process. (OriGene recommends Zeba Spin Desalting Columns, 7KMWCO from Thermo Scientific)
Purification:	Purified from mouse ascites fluids or tissue culture supernatant by affinity chromatography (protein A/G)
Conjugation:	Unconjugated
Storage:	Store at -20°C as received.
Stability:	Stable for 12 months from date of receipt.
Predicted Protein Size:	70.3 kDa
Gene Name:	Homo sapiens premelanosome protein (PMEL), transcript variant 3, mRNA.
Database Link:	NP_008859 Entrez Gene 362818 RatEntrez Gene 481102 DogEntrez Gene 710921 MonkeyEntrez Gene 6490 Human P40967



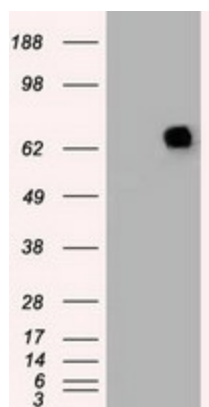
[View online »](#)

Background: Could be a melanogenic enzyme. Could represent an oncofetal self-antigen that is normally expressed at low levels in quiescent adult melanocytes but overexpressed by proliferating neonatal melanocytes and during tumor growth. Release of the soluble form, ME20-S, could protect tumor cells from antibody mediated immunity

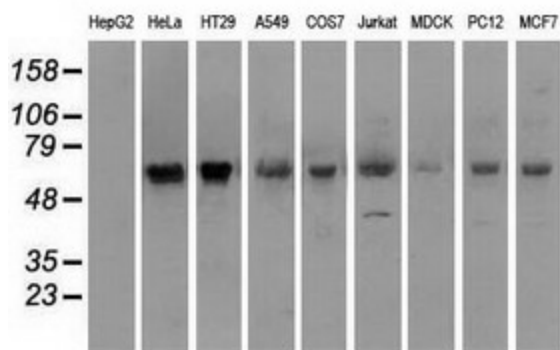
Synonyms: D12S53E; gp100; ME20; ME20-M; ME20M; P1; P100; PMEL17; SI; SIL; SILV

Protein Families: Secreted Protein, Transmembrane

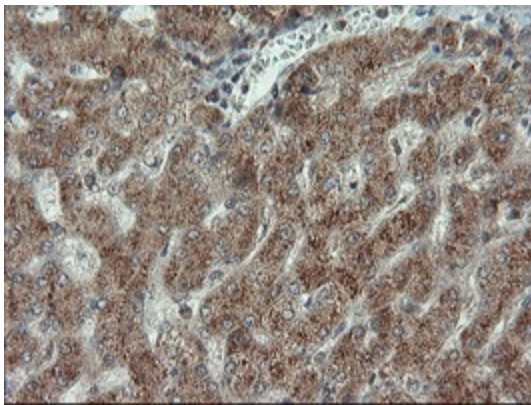
Product images:



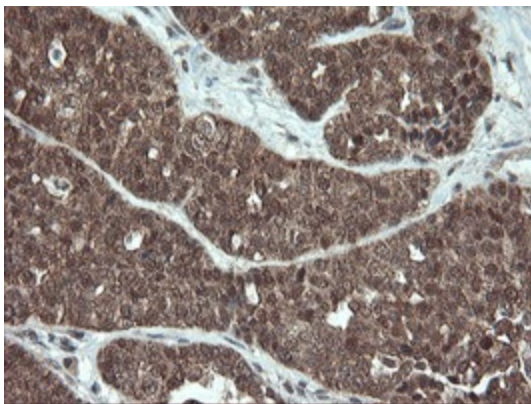
HEK293T cells were transfected with the pCMV6-ENTRY control (Left lane) or pCMV6-ENTRY SILV [RC200663], Right lane) cDNA for 48 hrs and lysed. Equivalent amounts of cell lysates (5 ug per lane) were separated by SDS-PAGE and immunoblotted with anti-SILV. Positive lysates [LY402062] (100ug) and [LC402062] (20ug) can be purchased separately from OriGene.



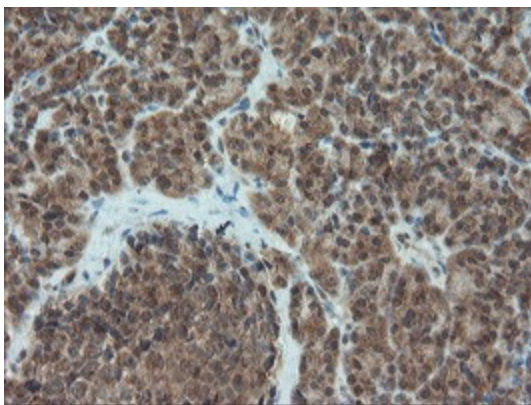
Western blot analysis of extracts (35ug) from 9 different cell lines by using anti-SILV monoclonal antibody.



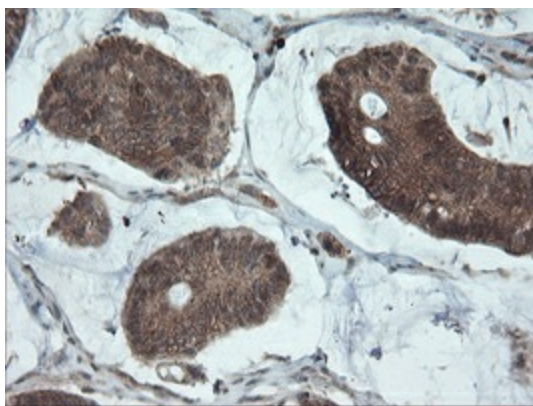
Immunohistochemical staining of paraffin-embedded Human liver tissue within the normal limits using anti-SILV mouse monoclonal antibody. ([TA500402])



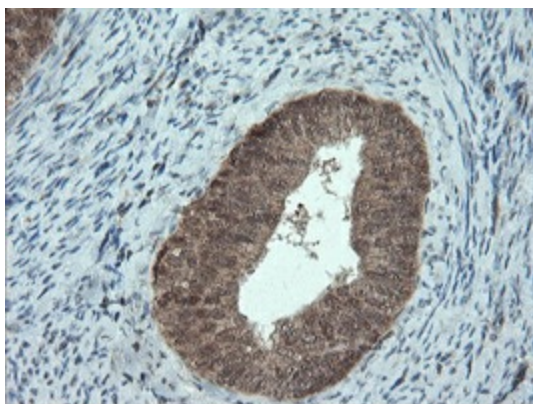
Immunohistochemical staining of paraffin-embedded Adenocarcinoma of Human ovary tissue using anti-SILV mouse monoclonal antibody. ([TA500402])



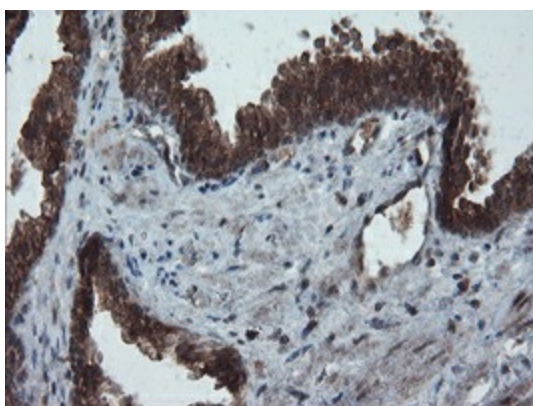
Immunohistochemical staining of paraffin-embedded Human pancreas tissue within the normal limits using anti-SILV mouse monoclonal antibody. ([TA500402])



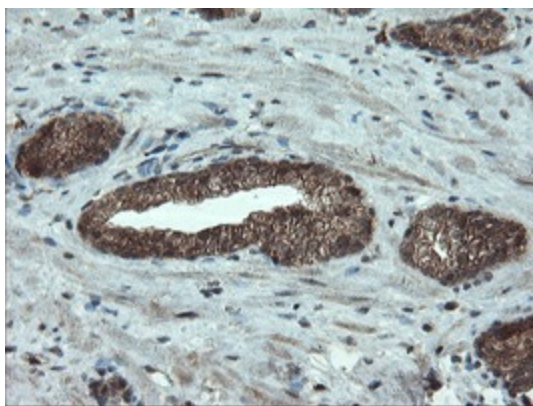
Immunohistochemical staining of paraffin-embedded Carcinoma of Human pancreas tissue using anti-SILV mouse monoclonal antibody. ([TA500402])



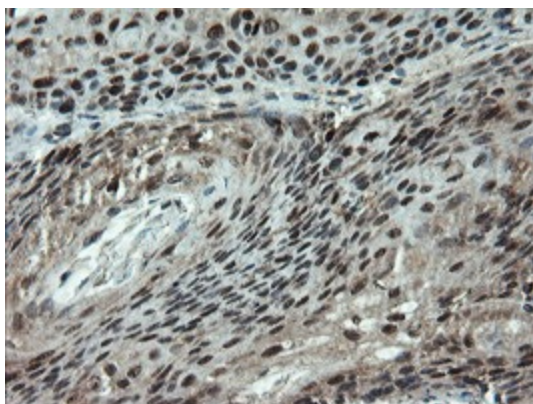
Immunohistochemical staining of paraffin-embedded Adenocarcinoma of Human endometrium tissue using anti-SILV mouse monoclonal antibody. ([TA500402])



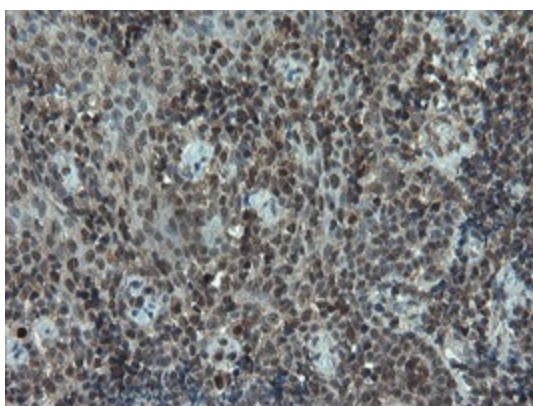
Immunohistochemical staining of paraffin-embedded Human prostate tissue within the normal limits using anti-SILV mouse monoclonal antibody. ([TA500402])



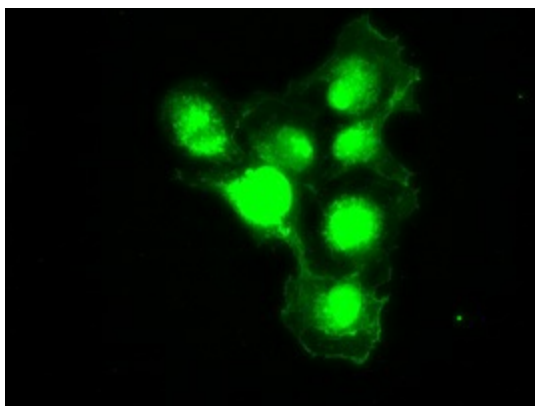
Immunohistochemical staining of paraffin-embedded Carcinoma of Human prostate tissue using anti-SILV mouse monoclonal antibody. ([TA500402])



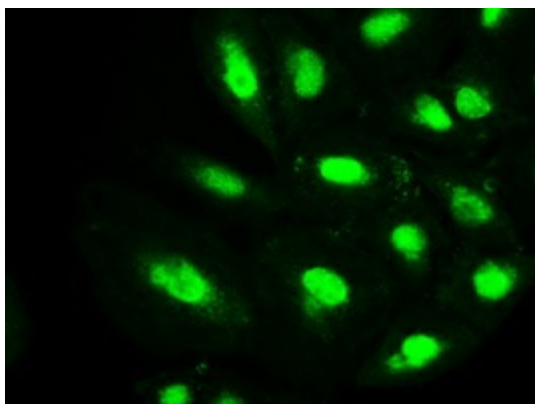
Immunohistochemical staining of paraffin-embedded Carcinoma of Human bladder tissue using anti-SILV mouse monoclonal antibody. ([TA500402])



Immunohistochemical staining of paraffin-embedded Human tonsil within the normal limits using anti-SILV mouse monoclonal antibody. ([TA500402])



Anti-SILV mouse monoclonal antibody ([TA500402]) immunofluorescent staining of COS7 cells transiently transfected by pCMV6-ENTRY SILV ([RC200663]).



Immunofluorescent staining of A549 cells using anti-SILV mouse monoclonal antibody ([TA500402]).