

Product datasheet for **CF500397**

CDK5 Mouse Monoclonal Antibody [Clone ID: OTI2H6]

Product data:

Product Type:	Primary Antibodies
Clone Name:	OTI2H6
Applications:	FC, IF, WB
Recommended Dilution:	WB 1:1000~2000, IF 1:50~100, FLOW 1:100
Reactivity:	Human, Dog, Mouse, Rat
Host:	Mouse
Isotype:	IgG1
Clonality:	Monoclonal
Immunogen:	Full length human recombinant protein of human CDK5 (NP_004926) produced in HEK293T cell.
Formulation:	Lyophilized powder (original buffer 1X PBS, pH 7.3, 8% trehalose)
Reconstitution Method:	For reconstitution, we recommend adding 100uL distilled water to a final antibody concentration of about 1 mg/mL. To use this carrier-free antibody for conjugation experiment, we strongly recommend performing another round of desalting process. (OriGene recommends Zeba Spin Desalting Columns, 7KMWCO from Thermo Scientific)
Purification:	Purified from mouse ascites fluids or tissue culture supernatant by affinity chromatography (protein A/G)
Conjugation:	Unconjugated
Storage:	Store at -20°C as received.
Stability:	Stable for 12 months from date of receipt.
Predicted Protein Size:	33.3 kDa
Gene Name:	cyclin dependent kinase 5
Database Link:	NP_004926 Entrez Gene 12568 MouseEntrez Gene 140908 RatEntrez Gene 475537 DogEntrez Gene 1020 Human Q00535



[View online »](#)

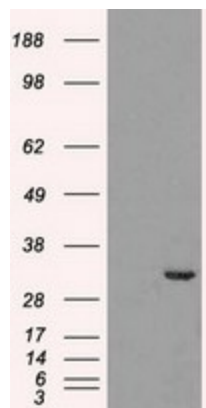
Background: Probably involved in the control of the cell cycle. Interacts with D1 and D3-type G1 cyclins. Can phosphorylate histone H1, tau, MAP2 and NF-H and NF-M. Also interacts with p35 which activates the kinase.

Synonyms: PSSALRE

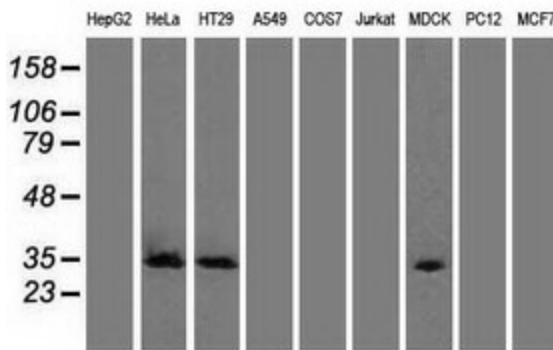
Protein Families: Druggable Genome, Protein Kinase

Protein Pathways: Alzheimer's disease, Axon guidance

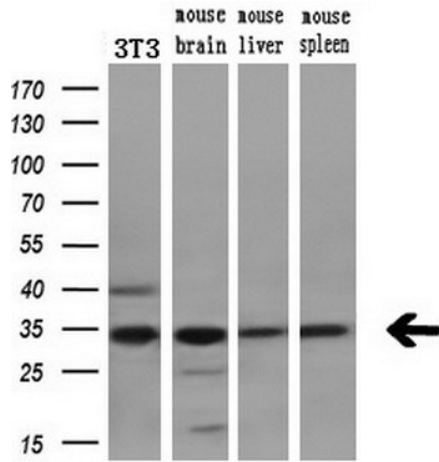
Product images:



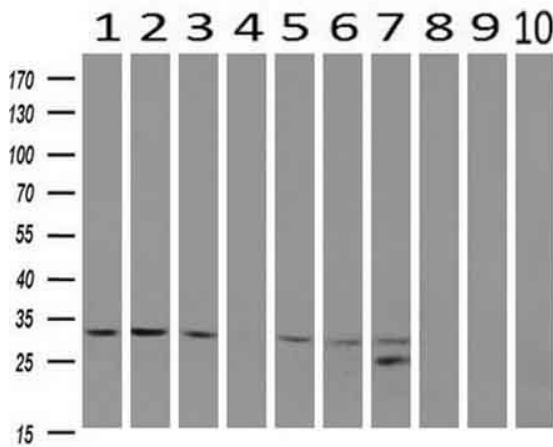
HEK293T cells were transfected with the pCMV6-ENTRY control (Cat# [PS100001], Left lane) or pCMV6-ENTRY CDK5 (Cat# [RC200342], Right lane) cDNA for 48 hrs and lysed. Equivalent amounts of cell lysates (5 ug per lane) were separated by SDS-PAGE and immunoblotted with anti-CDK5 (Cat# [TA500397]). Positive lysates [LY401536] (100ug) and [LC401536] (20ug) can be purchased separately from OriGene.



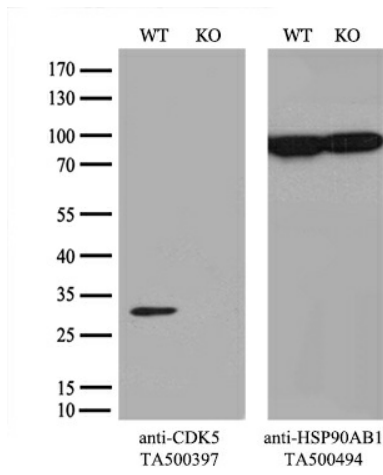
Western blot analysis of extracts (35ug) from 9 different cell lines by using anti-CDK5 monoclonal antibody.



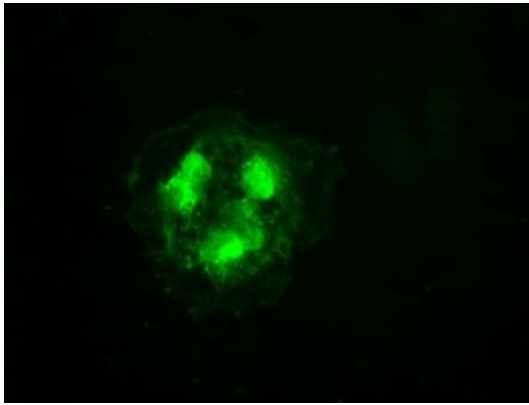
Western blot analysis of extracts (10ug) from a mouse cell line and 3 different mouse tissues by using anti-CDK5 monoclonal antibody (1:200).



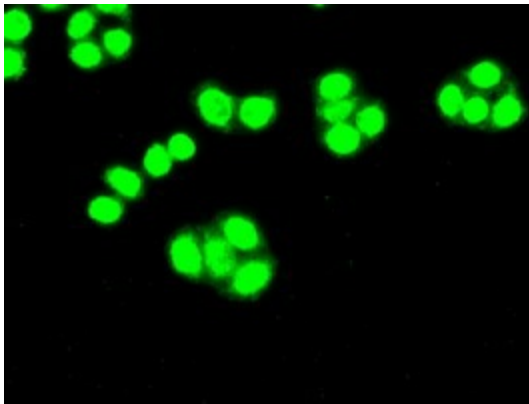
Western blot analysis of extracts (10ug) from 10 Human tissue by using anti-CDK5 monoclonal antibody at 1:200 (1: Testis; 2: Omentum; 3: Uterus; 4: Breast; 5: Brain; 6: Liver; 7: Ovary; 8: Thyroid gland; 9: colon; 10: spleen).



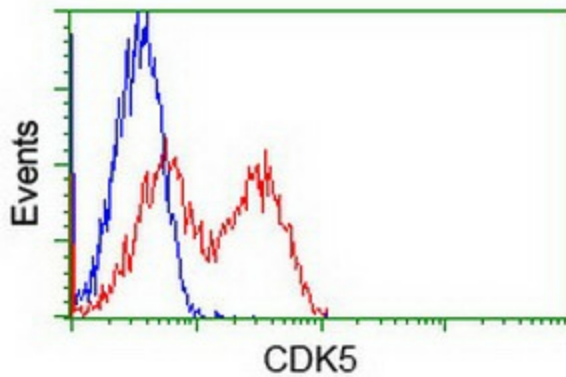
Equivalent amounts of cell lysates (10 ug per lane) of wild-type 293T cells (WT, Cat# LC810293T) and CDK5-Knockout 293T cells (KO, Cat# [LC810801]) were separated by SDS-PAGE and immunoblotted with anti-CDK5 monoclonal antibody [TA500397], (1:500). Then the blotted membrane was stripped and reprobed with anti-HSP90AB1 antibody ([TA500494]) as a loading control.



Anti-CDK5 mouse monoclonal antibody ([TA500397]) immunofluorescent staining of COS7 cells transiently transfected by pCMV6-ENTRY CDK5 ([RC200342]).



Immunofluorescent staining of HT29 cells using anti-CDK5 mouse monoclonal antibody ([TA500397]).



HEK293T cells transfected with either [RC200342] overexpress plasmid (Red) or empty vector control plasmid (Blue) were immunostained by anti-CDK5 antibody ([TA500397]), and then analyzed by flow cytometry.