

Product datasheet for **CF500393**

PLK1 Mouse Monoclonal Antibody [Clone ID: OTI8C12]

Product data:

Product Type:	Primary Antibodies
Clone Name:	OTI8C12
Applications:	FC, IF, IP, WB
Recommended Dilution:	WB 1:1000~2000, IF 1:100, FLOW 1:100, IP 2ug/500ul
Reactivity:	Human, Monkey, Mouse, Rat, Dog
Host:	Mouse
Isotype:	IgG1
Clonality:	Monoclonal
Immunogen:	Full-length protein expressed in 293T cell transfected with human PLK1 expression vector
Formulation:	Lyophilized powder (original buffer 1X PBS, pH 7.3, 8% trehalose)
Reconstitution Method:	For reconstitution, we recommend adding 100uL distilled water to a final antibody concentration of about 1 mg/mL. To use this carrier-free antibody for conjugation experiment, we strongly recommend performing another round of desalting process. (OriGene recommends Zeba Spin Desalting Columns, 7KMWCO from Thermo Scientific)
Purification:	Purified from mouse ascites fluids or tissue culture supernatant by affinity chromatography (protein A/G)
Conjugation:	Unconjugated
Storage:	Store at -20°C as received.
Stability:	Stable for 12 months from date of receipt.
Predicted Protein Size:	68.1 kDa
Gene Name:	Homo sapiens polo like kinase 1 (PLK1), mRNA.
Database Link:	NP_005021 Entrez Gene 18817 Mouse Entrez Gene 25515 Rat Entrez Gene 489971 Dog Entrez Gene 697686 Monkey Entrez Gene 5347 Human P53350



[View online »](#)

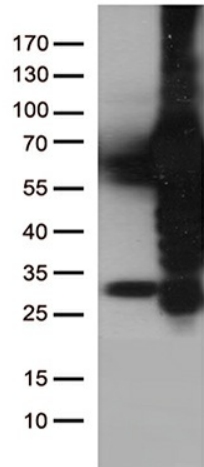
Background: Serine/threonine-protein kinase that performs several important functions throughout M phase of the cell cycle, including the regulation of centrosome maturation and spindle assembly, the removal of cohesins from chromosome arms, the inactivation of APC/C inhibitors, and the regulation of mitotic exit and cytokinesis

Synonyms: PLK; STPK13

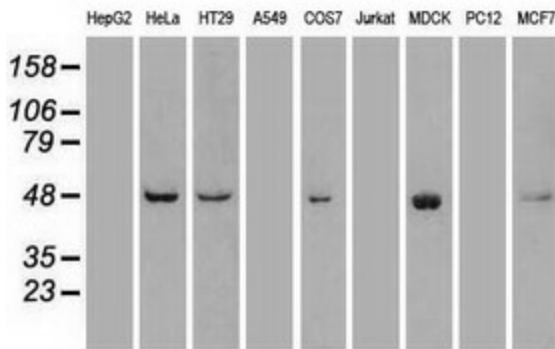
Protein Families: Druggable Genome, Protein Kinase

Protein Pathways: Cell cycle, Oocyte meiosis, Progesterone-mediated oocyte maturation

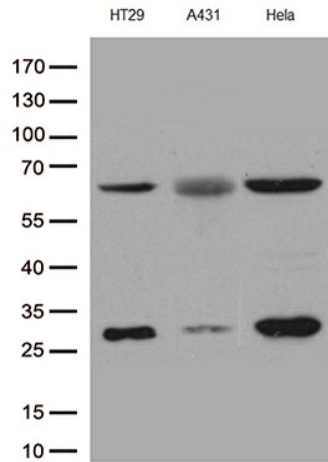
Product images:



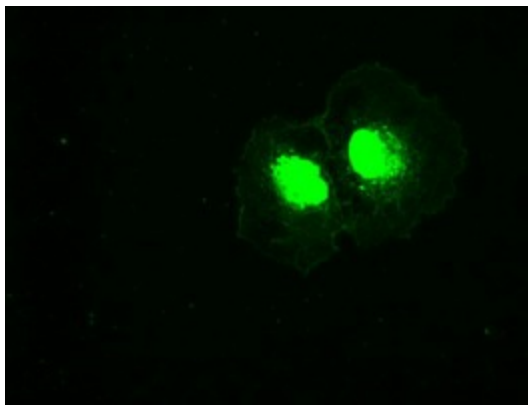
HEK293T cells were transfected with the pCMV6-ENTRY control (Left lane) or pCMV6-ENTRY PLK1 ([RC201795], Right lane) cDNA for 48 hrs and lysed. Equivalent amounts of cell lysates (5 ug per lane) were separated by SDS-PAGE and immunoblotted with anti-PLK1. (1: Positive lysates [LY417592] (100ug) and [LC417592] (20ug) can be purchased separately from OriGene.



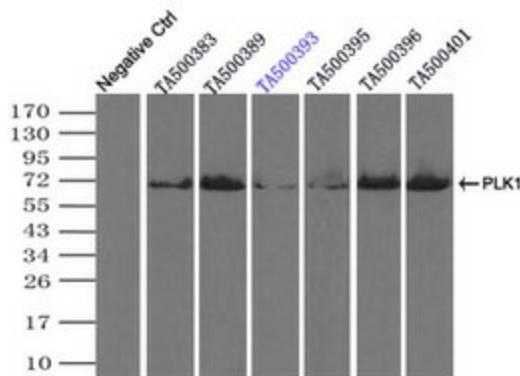
Western blot analysis of extracts (35ug) from 9 different cell lines by using anti-PLK1 monoclonal antibody.



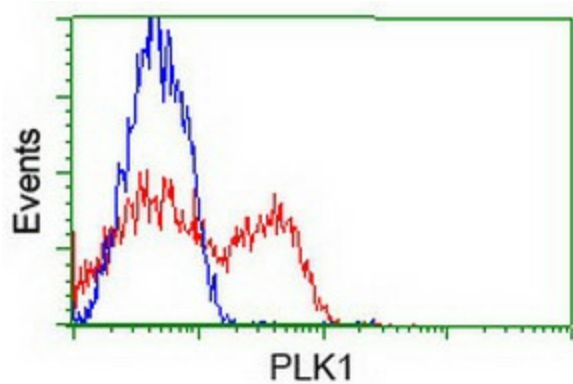
Western blot analysis of extracts (35ug) from 3 different cell lines by using anti-PLK1 monoclonal antibody (1:500).



Anti-PLK1 mouse monoclonal antibody ([TA500393]) immunofluorescent staining of COS7 cells transiently transfected by pCMV6-ENTRY PLK1 ([RC201795]) (1:100).



Immunoprecipitation (IP) of PLK1 by using TrueMab monoclonal anti-PLK1 antibodies (Negative control: IP without adding anti-PLK1 antibody.). For each experiment, 500ul of DDK tagged PLK1 overexpression lysates (at 1:5 dilution with HEK293T lysate), 2ug of anti-PLK1 antibody and 20ul (0.1mg) of goat anti-mouse conjugated magnetic beads were mixed and incubated overnight. After extensive wash to remove any non-specific binding, the immunoprecipitated products were analyzed with rabbit anti-DDK polyclonal antibody.



HEK293T cells transfected with either [RC201795] overexpress plasmid (Red) or empty vector control plasmid (Blue) were immunostained by anti-PLK1 antibody ([TA500393]), and then analyzed by flow cytometry (1:100).