

Product datasheet for **CF500392**

OXSRI Mouse Monoclonal Antibody [Clone ID: OTI1F3]

Product data:

Product Type:	Primary Antibodies
Clone Name:	OTI1F3
Applications:	IHC, WB
Recommended Dilution:	WB 1:1000, IHC 1:150
Reactivity:	Human, Dog, Rat, Monkey, Mouse
Host:	Mouse
Isotype:	IgG1
Clonality:	Monoclonal
Immunogen:	Full-length protein expressed in 293T cell transfected with human OXSRI expression vector
Formulation:	Lyophilized powder (original buffer 1X PBS, pH 7.3, 8% trehalose)
Reconstitution Method:	For reconstitution, we recommend adding 100uL distilled water to a final antibody concentration of about 1 mg/mL. To use this carrier-free antibody for conjugation experiment, we strongly recommend performing another round of desalting process. (OriGene recommends Zeba Spin Desalting Columns, 7KMWCO from Thermo Scientific)
Purification:	Purified from mouse ascites fluids or tissue culture supernatant by affinity chromatography (protein A/G)
Conjugation:	Unconjugated
Storage:	Store at -20°C as received.
Stability:	Stable for 12 months from date of receipt.
Predicted Protein Size:	57.8 kDa
Gene Name:	oxidative stress responsive kinase 1
Database Link:	NP_005100 Entrez Gene 108737 Mouse Entrez Gene 316064 Rat Entrez Gene 607809 Dog Entrez Gene 696362 Monkey Entrez Gene 9943 Human O95747



[View online »](#)

Background:

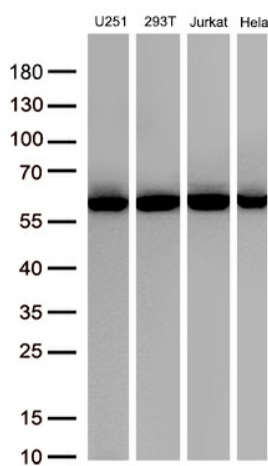
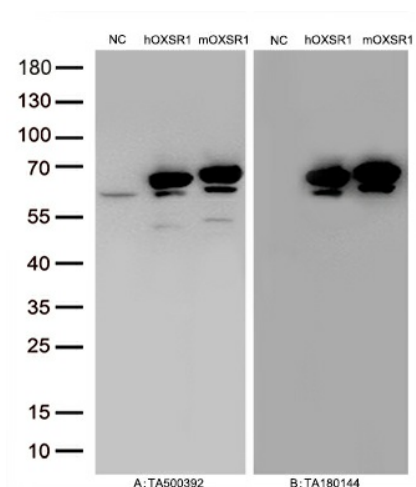
The product of this gene belongs to the Ser/Thr protein kinase family of proteins. It regulates downstream kinases in response to environmental stress, and may play a role in regulating the actin cytoskeleton. Regulates downstream kinases in response to environmental stress. May also have a function in regulating the actin cytoskeleton

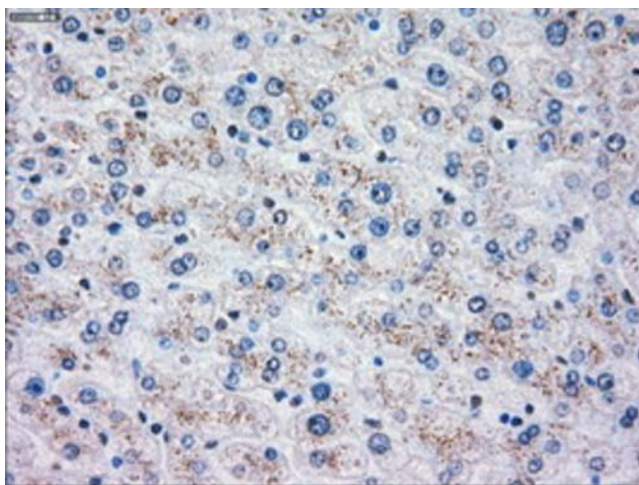
Synonyms:

OSR1

Protein Families:

Druggable Genome, Protein Kinase

Product images:




Immunohistochemical staining of paraffin-embedded Human liver tissue within the normal limits using anti-OXSR1 mouse monoclonal antibody. Heat-induced epitope retrieval by EDTA solution buffer pH 8.0 at 120°C for 3 min.