

## Product datasheet for **CF500388**

### PLK1 Mouse Monoclonal Antibody [Clone ID: OTI9E9]

#### Product data:

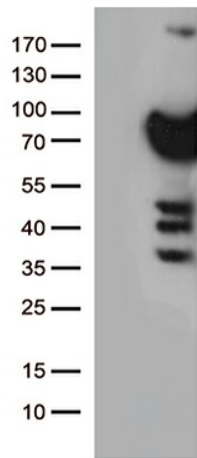
Product Type:	Primary Antibodies
Clone Name:	OTI9E9
Applications:	FC, WB
Recommended Dilution:	WB 1:500
Reactivity:	Human, Mouse, Rat
Host:	Mouse
Isotype:	IgG2b
Clonality:	Monoclonal
Immunogen:	Full length human recombinant protein of human PLEK (NP_002655) produced in HEK293T cell.
Formulation:	Lyophilized powder (original buffer 1X PBS, pH 7.3, 8% trehalose)
Reconstitution Method:	For reconstitution, we recommend adding 100uL distilled water to a final antibody concentration of about 1 mg/mL. To use this carrier-free antibody for conjugation experiment, we strongly recommend performing another round of desalting process. (OriGene recommends Zeba Spin Desalting Columns, 7KMWCO from Thermo Scientific)
Purification:	Purified from mouse ascites fluids or tissue culture supernatant by affinity chromatography (protein A/G)
Conjugation:	Unconjugated
Storage:	Store at -20°C as received.
Stability:	Stable for 12 months from date of receipt.
Predicted Protein Size:	68.1 kDa
Gene Name:	polo like kinase 1
Database Link:	<a href="#">NP_005021</a> <a href="#">Entrez Gene 18817 Mouse</a> <a href="#">Entrez Gene 25515 Rat</a> <a href="#">Entrez Gene 5347 Human</a> <a href="#">P53350</a>
Synonyms:	PLK; STPK13
Protein Families:	Druggable Genome, Protein Kinase



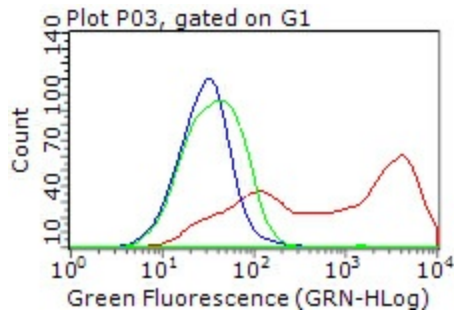
[View online »](#)

**Protein Pathways:** Cell cycle, Oocyte meiosis, Progesterone-mediated oocyte maturation

**Product images:**



HEK293T cells were transfected with the pCMV6-ENTRY control (Left lane) or pCMV6-ENTRY PLK1 ([RC201795], Right lane) cDNA for 48 hrs and lysed. Equivalent amounts of cell lysates (5 ug per lane) were separated by SDS-PAGE and immunoblotted with anti-PLK1. (1: Positive lysates [LY417592] (100ug) and [LC417592] (20ug) can be purchased separately from OriGene.



HEK293T cells transfected with either [RC201795] overexpress plasmid (Red), compared to an IgG isotype control, (Green) or empty vector control plasmid (Blue) were immunostained by anti-PLK1 antibody ([TA500388]), and then analyzed by flow cytometry (1:100).