

## Product datasheet for **CF500363**

### CD19 Mouse Monoclonal Antibody [Clone ID: OT15F3]

#### Product data:

Product Type:	Primary Antibodies
Clone Name:	OT15F3
Applications:	WB
Recommended Dilution:	WB 1:1000
Reactivity:	Human
Host:	Mouse
Isotype:	IgG1
Clonality:	Monoclonal
Immunogen:	Full-length protein expressed in 293T cell transfected with human CD19 expression vector
Formulation:	Lyophilized powder (original buffer 1X PBS, pH 7.3, 8% trehalose)
Reconstitution Method:	For reconstitution, we recommend adding 100uL distilled water to a final antibody concentration of about 1 mg/mL. To use this carrier-free antibody for conjugation experiment, we strongly recommend performing another round of desalting process. (OriGene recommends Zeba Spin Desalting Columns, 7KMWCO from Thermo Scientific)
Purification:	Purified from mouse ascites fluids or tissue culture supernatant by affinity chromatography (protein A/G)
Conjugation:	Unconjugated
Storage:	Store at -20°C as received.
Stability:	Stable for 12 months from date of receipt.
Predicted Protein Size:	61.13 kDa
Gene Name:	CD19 molecule
Database Link:	<a href="#">NP_001761</a> <a href="#">Entrez Gene 930 Human</a> <a href="#">P15391</a>



[View online »](#)

**Background:**

Lymphocytes proliferate and differentiate in response to various concentrations of different antigens. The ability of the B cell to respond in a specific, yet sensitive manner to the various antigens is achieved with the use of low-affinity antigen receptors. This gene encodes a cell surface molecule which assembles with the antigen receptor of B lymphocytes in order to decrease the threshold for antigen receptor-dependent stimulation.

**Synonyms:**

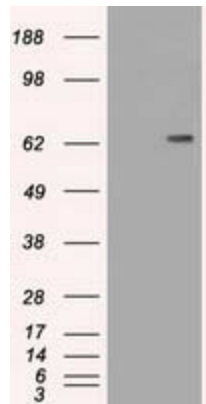
B4; CVID3

**Protein Families:**

Druggable Genome, Transmembrane

**Protein Pathways:**

B cell receptor signaling pathway, Hematopoietic cell lineage, Primary immunodeficiency

**Product images:**

HEK293T cells were transfected with the pCMV6-ENTRY control (Left lane) or pCMV6-ENTRY CD19 ([RC202922], Right lane) cDNA for 48 hrs and lysed. Equivalent amounts of cell lysates (5 ug per lane) were separated by SDS-PAGE and immunoblotted with anti-CD19. Positive lysates [LY400678] (100ug) and [LC400678] (20ug) can be purchased separately from OriGene.