

Product datasheet for CF500357

MX1 Mouse Monoclonal Antibody [Clone ID: OTI2G12]

Product data:

Product Type:	Primary Antibodies
Clone Name:	OTI2G12
Applications:	IF, WB
Recommended Dilution:	WB 1:2000, IF 1:100
Reactivity:	Human, Mouse, Rat
Host:	Mouse
Isotype:	IgG1
Clonality:	Monoclonal
Immunogen:	Full length human recombinant protein of human MX1 (NP_002453) produced in HEK293T cell.
Formulation:	Lyophilized powder (original buffer 1X PBS, pH 7.3, 8% trehalose)
Reconstitution Method:	For reconstitution, we recommend adding 100uL distilled water to a final antibody concentration of about 1 mg/mL. To use this carrier-free antibody for conjugation experiment, we strongly recommend performing another round of desalting process. (OriGene recommends Zeba Spin Desalting Columns, 7KMWCO from Thermo Scientific)
Purification:	Purified from mouse ascites fluids or tissue culture supernatant by affinity chromatography (protein A/G)
Conjugation:	Unconjugated
Storage:	Store at -20°C as received.
Stability:	Stable for 12 months from date of receipt.
Predicted Protein Size:	75.5 kDa
Gene Name:	MX dynamin like GTPase 1



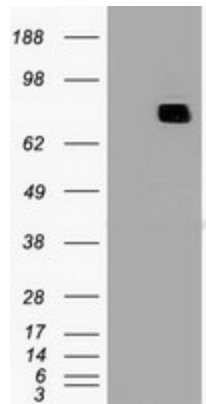
Database Link: [NP_002453](#)
[Entrez Gene 4599 Human](#)
[P20591](#)

Background: In mouse, the interferon-inducible Mx protein is responsible for a specific antiviral state against influenza virus infection. The protein encoded by this gene is similar to the mouse protein as determined by its antigenic relatedness, induction conditions, physicochemical properties, and amino acid analysis. This cytoplasmic protein is a member of both the dynamin family and the family of large GTPases. Two transcript variants encoding the same protein have been found for this gene.

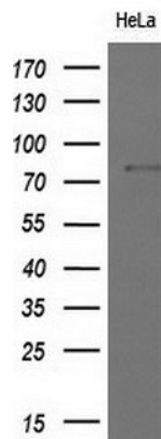
Synonyms: IFI-78K; IFI78; MX; MxA

Protein Families: Druggable Genome

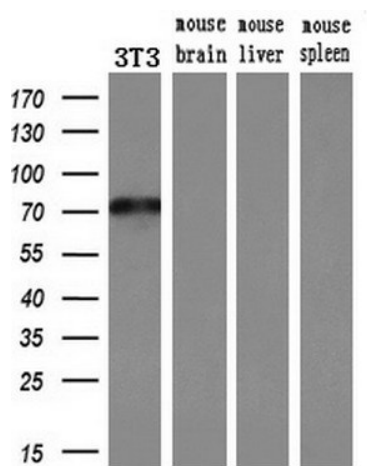
Product images:



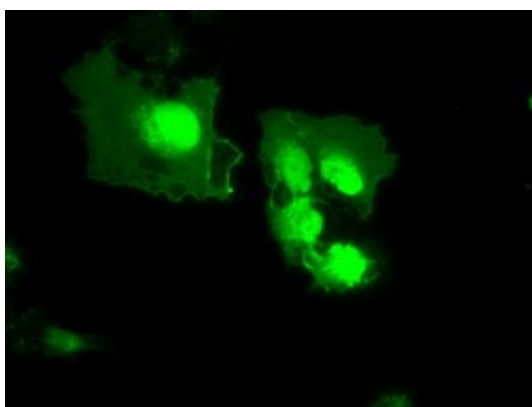
HEK293T cells were transfected with the pCMV6-ENTRY control (Cat# [PS100001], Left lane) or pCMV6-ENTRY MX1 (Cat# [RC207418], Right lane) cDNA for 48 hrs and lysed. Equivalent amounts of cell lysates (5 ug per lane) were separated by SDS-PAGE and immunoblotted with anti-MX1 (Cat# [TA500357]). Positive lysates [LY400886] (100ug) and [LC400886] (20ug) can be purchased separately from OriGene.



Western blot analysis of extracts (10ug) from 1 cell lines by using anti-MX1 monoclonal antibody at 1:200 dilution.



Western blot analysis of extracts (10ug) from a mouse cell line and 3 different mouse tissues by using anti-MX1 monoclonal antibody (1:200).



Anti-MX1 mouse monoclonal antibody ([TA500357]) immunofluorescent staining of COS7 cells transiently transfected by pCMV6-ENTRY MX1 ([RC207418]).