

## Product datasheet for **CF500353**

### L1CAM Mouse Monoclonal Antibody [Clone ID: OT11H3]

#### Product data:

Product Type:	Primary Antibodies
Clone Name:	OT11H3
Applications:	FC, IF, IP, WB
Recommended Dilution:	WB 1:2500~5000, IF 1:100, FLOW 1:100, IP 2-4ug/mg
Reactivity:	Human, Mouse, Rat
Host:	Mouse
Isotype:	IgG1
Clonality:	Monoclonal
Immunogen:	Full length human recombinant protein of human L1CAM (NP_000416) produced in HEK293T cell.
Formulation:	Lyophilized powder (original buffer 1X PBS, pH 7.3, 8% trehalose)
Reconstitution Method:	For reconstitution, we recommend adding 100uL distilled water to a final antibody concentration of about 1 mg/mL. To use this carrier-free antibody for conjugation experiment, we strongly recommend performing another round of desalting process. (OriGene recommends Zeba Spin Desalting Columns, 7KMWCO from Thermo Scientific)
Purification:	Purified from mouse ascites fluids or tissue culture supernatant by affinity chromatography (protein A/G)
Conjugation:	Unconjugated
Storage:	Store at -20°C as received.
Stability:	Stable for 12 months from date of receipt.
Predicted Protein Size:	140.0 kDa
Gene Name:	L1 cell adhesion molecule
Database Link:	<a href="#">NP_000416</a> <a href="#">Entrez Gene 16728 Mouse</a> <a href="#">Entrez Gene 50687 Rat</a> <a href="#">Entrez Gene 3897 Human</a> <a href="#">P32004</a>



[View online »](#)

**Background:**

The protein encoded by this gene is an axonal glycoprotein belonging to the immunoglobulin supergene family. The ectodomain, consisting of several immunoglobulin-like domains and fibronectin-like repeats (type III), is linked via a single transmembrane sequence to a conserved cytoplasmic domain. This cell adhesion molecule plays an important role in nervous system development, including neuronal migration and differentiation. Mutations in the gene cause three X-linked neurological syndromes known by the acronym CRASH (corpus callosum hypoplasia, retardation, aphasia, spastic paraplegia and hydrocephalus). Alternative splicing of a neuron-specific exon is thought to be functionally relevant.

**Synonyms:**

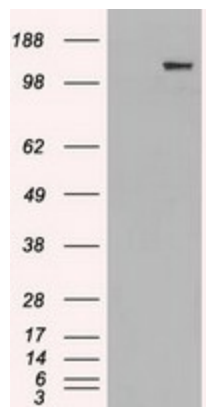
CAML1; CD171; HSAS; HSAS1; MASA; MIC5; N-CAM-L1; N-CAML1; NCAM-L1; S10; SPG1

**Protein Families:**

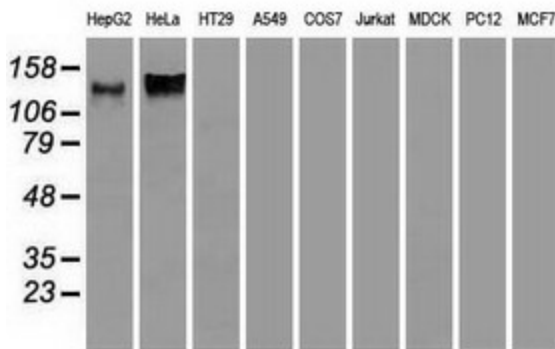
Druggable Genome, ES Cell Differentiation/IPS, Transmembrane

**Protein Pathways:**

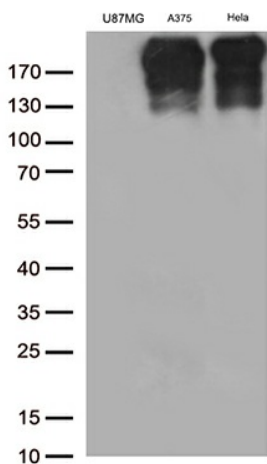
Axon guidance, Cell adhesion molecules (CAMs)

**Product images:**


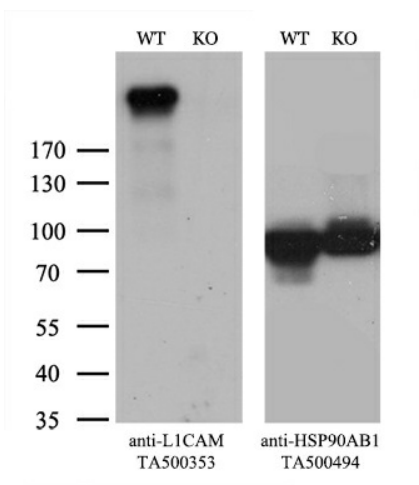
HEK293T cells were transfected with the pCMV6-ENTRY control (Left lane) or pCMV6-ENTRY L1CAM ([RC211601], Right lane) cDNA for 48 hrs and lysed. Equivalent amounts of cell lysates (5 ug per lane) were separated by SDS-PAGE and immunoblotted with anti-L1CAM. Positive lysates [LY400150] (100ug) and [LC400150] (20ug) can be purchased separately from OriGene.



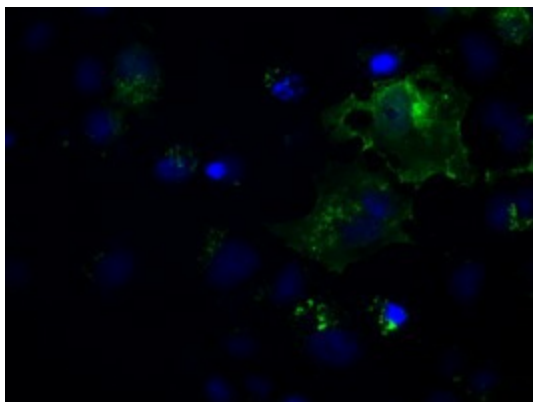
Western blot analysis of extracts (35ug) from 9 different cell lines by using anti-L1CAM monoclonal antibody.



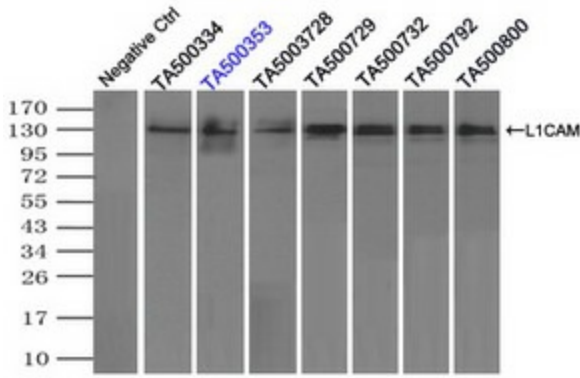
Western blot analysis of extracts (35ug) from 3 cell line lysates by using anti-L1CAM monoclonal antibody (1:500).



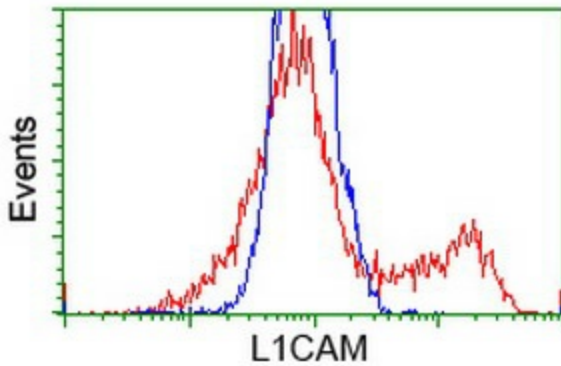
Equivalent amounts of cell lysates (10 ug per lane) of wild-type HeLa cells (WT, Cat# LC810HELA) and L1CAM-Knockout HeLa cells (KO, Cat# [LC832196] ) were separated by SDS-PAGE and immunoblotted with anti-L1CAM monoclonal antibody [TA500353] (1:1000 `). Then the blotted membrane was stripped and reprobed with anti-HSP90 antibody as a loading control.



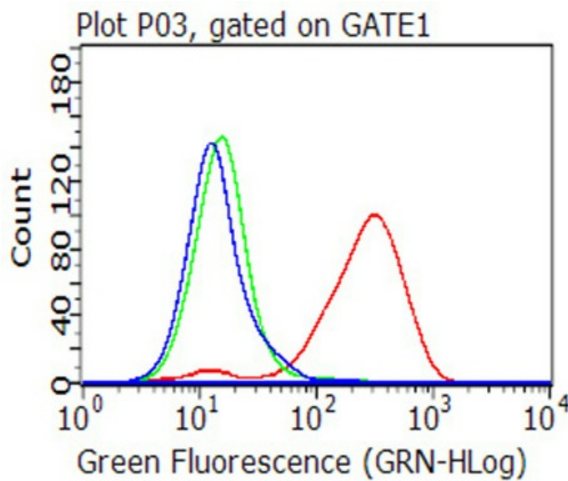
Anti-L1CAM mouse monoclonal antibody ([TA500353]) immunofluorescent staining of COS7 cells transiently transfected by pCMV6-ENTRY L1CAM ([RC211601]).



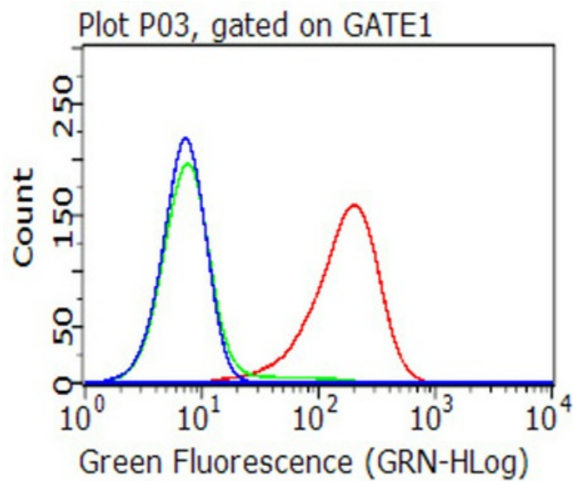
Immunoprecipitation of L1CAM by using TrueMab monoclonal anti-L1CAM antibody (Negative control: IP without adding anti-L1CAM antibody). For each experiment, 500ul of DDK tagged L1CAM overexpression lysates (at 1:5 dilution with HEK293T lysate), 2ug of anti-L1CAM antibody and 20ul (0.1mg) of goat anti-mouse conjugated magnetic beads were mixed and incubated overnight. After extensive wash to remove any non-specific binding, the immunoprecipitated products were analyzed with rabbit anti-DDK polyclonal antibody.



HEK293T cells transfected with either [RC211601] overexpress plasmid (Red) or empty vector control plasmid (Blue) were immunostained by anti-L1CAM antibody ([TA500353]), and then analyzed by flow cytometry.



Flow cytometric analysis of living Hela cells, using anti-L1CAM antibody ([TA500353], Red), compared to an isotype control (green), and a PBS control (blue) (1:100).



Flow cytometric analysis of living A375 cells, using anti-L1CAM antibody ([TA500353], Red), compared to an isotype control (green), and a PBS control (blue) (1:100).