

## Product datasheet for **CF500350**

### Prominin 2 (PROM2) Mouse Monoclonal Antibody [Clone ID: OTI13A9]

#### Product data:

Product Type:	Primary Antibodies
Clone Name:	OTI13A9
Applications:	IF, IHC, WB
Recommended Dilution:	WB 1:5000, IHC 1:50, IF 1:100
Reactivity:	Human
Host:	Mouse
Isotype:	IgG1
Clonality:	Monoclonal
Immunogen:	Full-length protein expressed in 293T cell transfected with human PROM2 expression vector
Formulation:	Lyophilized powder (original buffer 1X PBS, pH 7.3, 8% trehalose)
Reconstitution Method:	For reconstitution, we recommend adding 100uL distilled water to a final antibody concentration of about 1 mg/mL. To use this carrier-free antibody for conjugation experiment, we strongly recommend performing another round of desalting process. (OriGene recommends Zeba Spin Desalting Columns, 7KMWCO from Thermo Scientific)
Purification:	Purified from mouse ascites fluids or tissue culture supernatant by affinity chromatography (protein A/G)
Conjugation:	Unconjugated
Storage:	Store at -20°C as received.
Stability:	Stable for 12 months from date of receipt.
Predicted Protein Size:	91.8 kDa
Gene Name:	prominin 2
Database Link:	<a href="#">NP_653308</a> <a href="#">Entrez Gene 150696 Human</a> <a href="#">Q8N271</a>
Synonyms:	PROML2
Protein Families:	Transmembrane



[View online »](#)

Product images:

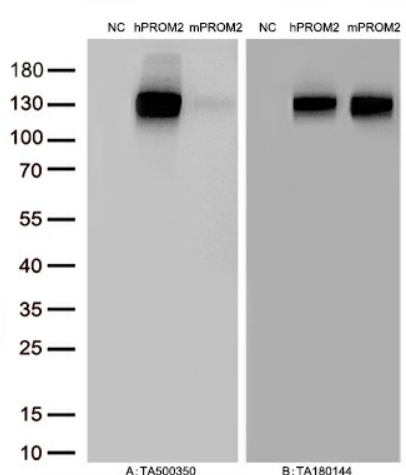
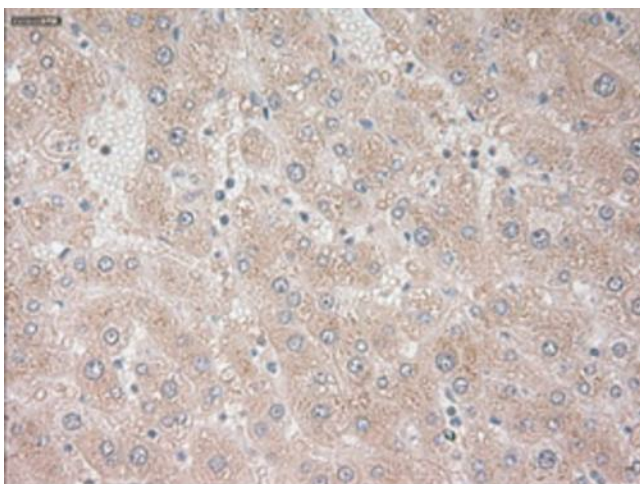
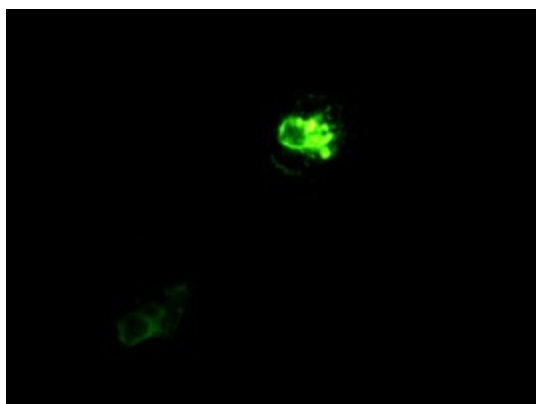


Figure A, Western blot analysis of overexpressed lysates (25ug per lane) from HEK293T cells transfected with empty plasmid ([PS100001], NC), human PROM2 plasmid ([RC211605], hPROM2), mouse PROM2 plasmid ([MR216732], mPROM2) using anti-PROM2 antibody [TA500350] (1:500). Figure B, Western blot analysis of the same samples as figure A with anti-DDK antibody ([TA180144], 1:1000).



Immunohistochemical staining of paraffin-embedded liver tissue within the normal limits using anti-PROM2 mouse monoclonal antibody. Heat-induced epitope retrieval by EDTA solution buffer pH 8.0 at 120°C for 3 min.



Immunofluorescent staining of Cos7 cells using anti-PROM2 mouse monoclonal antibody ([TA500350]).