

Product datasheet for **CF500349**

Prominin 2 (PROM2) Mouse Monoclonal Antibody [Clone ID: OTI3D12]

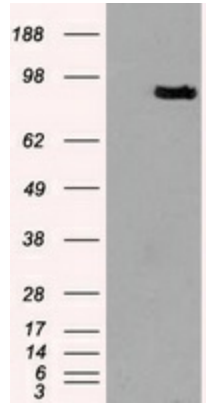
Product data:

Product Type:	Primary Antibodies
Clone Name:	OTI3D12
Applications:	IF, WB
Recommended Dilution:	WB 1:2000, IF 1:100
Reactivity:	Human
Host:	Mouse
Isotype:	IgG2b
Clonality:	Monoclonal
Immunogen:	Full-length protein expressed in 293T cell transfected with human PROM2 expression vector
Formulation:	Lyophilized powder (original buffer 1X PBS, pH 7.3, 8% trehalose)
Reconstitution Method:	For reconstitution, we recommend adding 100uL distilled water to a final antibody concentration of about 1 mg/mL. To use this carrier-free antibody for conjugation experiment, we strongly recommend performing another round of desalting process. (OriGene recommends Zeba Spin Desalting Columns, 7KMWCO from Thermo Scientific)
Purification:	Purified from mouse ascites fluids or tissue culture supernatant by affinity chromatography (protein A/G)
Conjugation:	Unconjugated
Storage:	Store at -20°C as received.
Stability:	Stable for 12 months from date of receipt.
Predicted Protein Size:	91.883 kDa
Gene Name:	prominin 2
Database Link:	NP_653308 Entrez Gene 150696 Human Q8N271
Synonyms:	PROML2
Protein Families:	Transmembrane

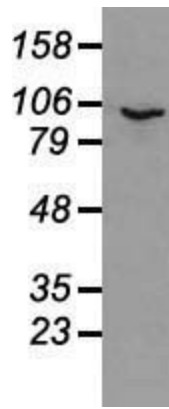


[View online »](#)

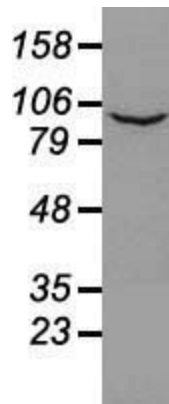
Product images:



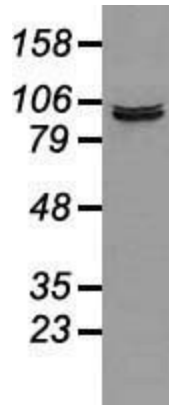
HEK293T cells were transfected with the pCMV6-ENTRY control (Cat# [PS100001], Left lane) or pCMV6-ENTRY PROM2 (Cat# [RC211605], Right lane) cDNA for 48 hrs and lysed. Equivalent amounts of cell lysates (5 ug per lane) were separated by SDS-PAGE and immunoblotted with anti-PROM2(Cat# [TA500349]). Positive lysates [LY403405] (100ug) and [LC403405] (20ug) can be purchased separately from OriGene.



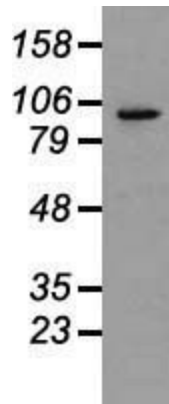
Western blot analysis of 35ug of cell extracts from human Liver carcinoma (HepG2) cells using anti-PROM2 antibody.



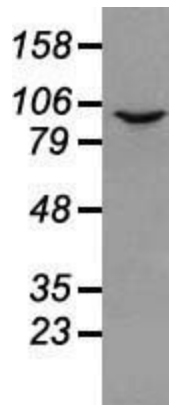
Western blot analysis of 35ug of cell extracts from human (HeLa) cells using anti-PROM2 antibody.



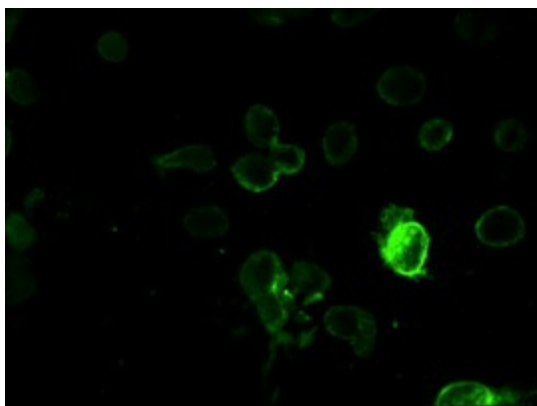
Western blot analysis of 35ug of cell extracts from human colon adenocarcinoma (HT29) cells using anti-PROM2 antibody.



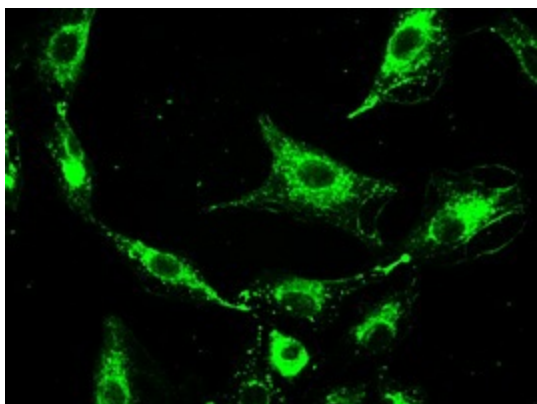
Western blot analysis of 35ug of cell extracts from human Lung adenocarcinoma (A549) cells using anti-PROM2 antibody.



Western blot analysis of 35ug of cell extracts from canine Kidney (MDCK) cells using anti-PROM2 antibody.



Immunofluorescent staining of Cos7 cells using anti-PROM2 mouse monoclonal antibody (TA500349).



Immunofluorescent staining of A549 cells using anti-PROM2 mouse monoclonal antibody (TA500349).