

Product datasheet for **CF500343**

GFAP Mouse Monoclonal Antibody [Clone ID: OT11E11]

Product data:

Product Type:	Primary Antibodies
Clone Name:	OT11E11
Applications:	IF, IHC, WB
Recommended Dilution:	WB 1:5000, IF 1:100
Reactivity:	Human, Mouse, Rat
Host:	Mouse
Isotype:	IgG1
Clonality:	Monoclonal
Immunogen:	Full length human recombinant protein of human GFAP (NP_002046) produced in HEK293T cell.
Formulation:	Lyophilized powder (original buffer 1X PBS, pH 7.3, 8% trehalose)
Reconstitution Method:	For reconstitution, we recommend adding 100uL distilled water to a final antibody concentration of about 1 mg/mL. To use this carrier-free antibody for conjugation experiment, we strongly recommend performing another round of desalting process. (OriGene recommends Zeba Spin Desalting Columns, 7KMWCO from Thermo Scientific)
Purification:	Purified from mouse ascites fluids or tissue culture supernatant by affinity chromatography (protein A/G)
Conjugation:	Unconjugated
Storage:	Store at -20°C as received.
Stability:	Stable for 12 months from date of receipt.
Predicted Protein Size:	49.9 kDa
Gene Name:	glial fibrillary acidic protein
Database Link:	NP_002046 Entrez Gene 14580 Mouse Entrez Gene 24387 Rat Entrez Gene 2670 Human P14136



[View online »](#)

Background:

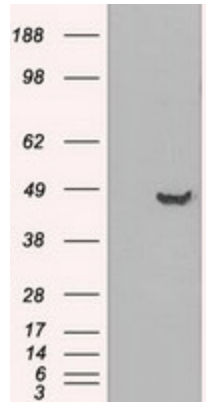
This gene encodes one of the major intermediate filament proteins of mature astrocytes. It is used as a marker to distinguish astrocytes from other glial cells during development. Mutations in this gene cause Alexander disease, a rare disorder of astrocytes in the central nervous system. Alternative splicing results in multiple transcript variants encoding distinct isoforms.

Synonyms:

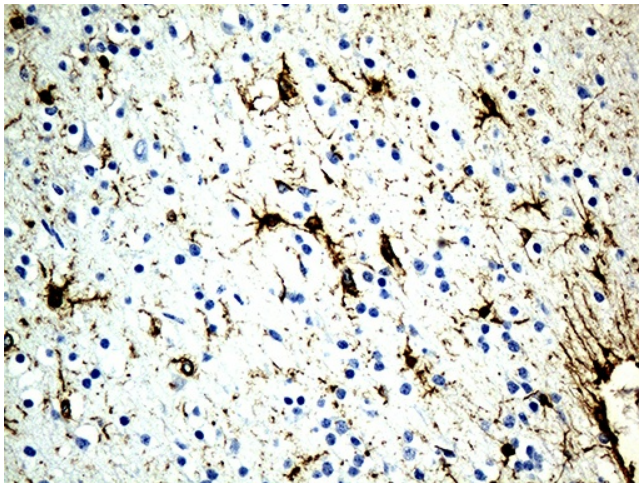
ALXDRD

Protein Families:

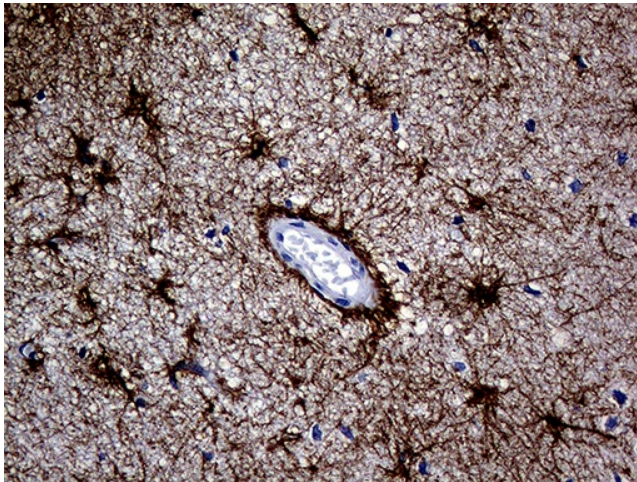
ES Cell Differentiation/IPS

Product images:


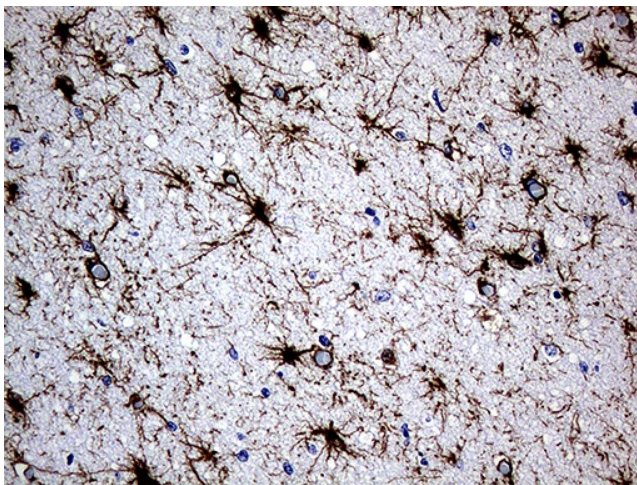
HEK293T cells were transfected with the pCMV6-ENTRY control (Left lane) or pCMV6-ENTRY GFAP ([RC204548], Right lane) cDNA for 48 hrs and lysed. Equivalent amounts of cell lysates (5 ug per lane) were separated by SDS-PAGE and immunoblotted with anti-GFAP. Positive lysates [LY419563] (100ug) and [LC419563] (20ug) can be purchased separately from OriGene.



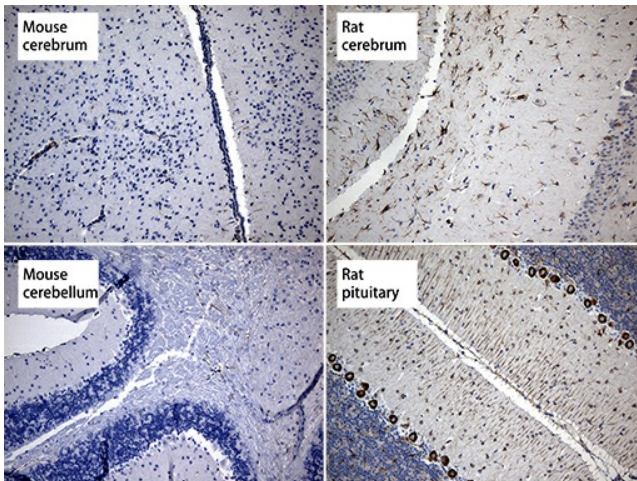
Immunohistochemical staining of paraffin-embedded Human adult brain tissue within the normal limits using anti-GFAP mouse monoclonal antibody. (Heat-induced epitope retrieval by 1mM EDTA in 10mM Tris buffer (pH8.5) at 120°C for 3min, [TA500343]) (1:500)



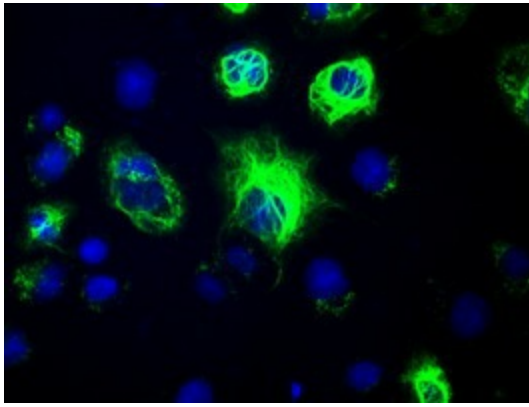
Immunohistochemical staining of paraffin-embedded Human embryonic brain cortex tissue within the normal limits using anti-GFAP mouse monoclonal antibody. (Heat-induced epitope retrieval by 1mM EDTA in 10mM Tris buffer (pH8.0) at 120°C for 3min, [TA500343]) (1:500)



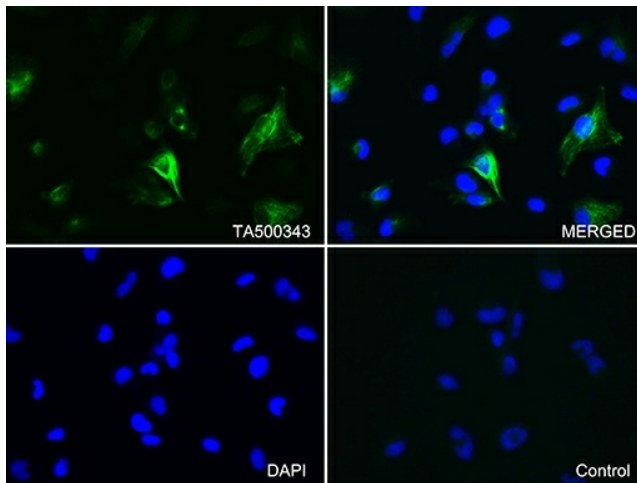
Immunohistochemical staining of paraffin-embedded Human embryonic cerebellum within the normal limits using anti-GFAP mouse monoclonal antibody. (Heat-induced epitope retrieval by 1mM EDTA in 10mM Tris buffer (pH8.0) at 120°C for 3min, [TA500343]) (1:500)



Immunohistochemical staining of paraffin-embedded mouse and rat brain sections within the normal limits using anti-GFAP mouse monoclonal antibody (1:500).



Anti-GFAP mouse monoclonal antibody ([TA500343]) immunofluorescent staining of COS7 cells transiently transfected by pCMV6-ENTRY GFAP ([RC204548]).



Immunofluorescent staining of SNB-19 cells using anti-GFAP antibody ([TA500343]/green, upper left; DAPI/blue, lower left; MERGED, upper right) or isotype control (MERGED, lower right) (1:100).