

Product datasheet for **CF500316**

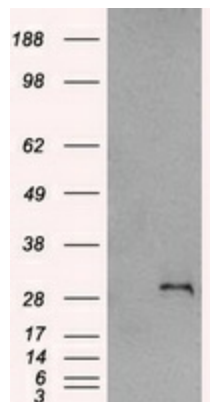
SNAIL (SNAI1) Mouse Monoclonal Antibody [Clone ID: OTI5E12]

Product data:

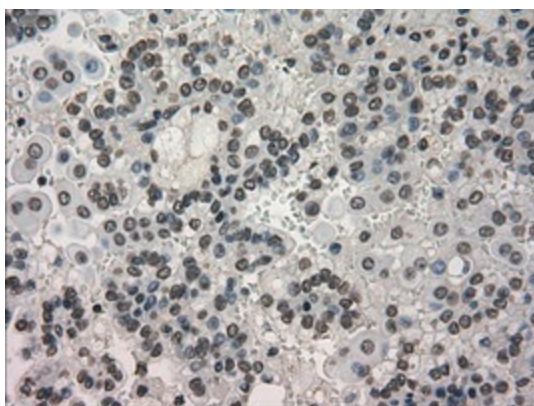
Product Type:	Primary Antibodies
Clone Name:	OTI5E12
Applications:	IHC, WB
Recommend Dilution:	WB 1:2000 IHC: 1:150
Reactivity:	Human
Host:	Mouse
Isotype:	IgG2b
Clonality:	Monoclonal
Immunogen:	Full-length protein expressed in 293T cell transfected with human SNAI1 expression vector
Formulation:	PBS (pH7.3), 8% Trehalose
Reconstitution Method:	Reconstitute with PBS (pH7.3). To use this carrier-free antibody for conjugation experiment, we strongly recommend you to perform another round of desalting process. (OriGene recommends Zeba Spin Desalting Columns, 7KMWCO from Thermo Scientific)
Purification:	Purified from cell culture supernatant by affinity chromatography
Predicted Protein Size:	29.083 kDa
Gene Name:	Homo sapiens snail family transcriptional repressor 1 (SNAI1), mRNA.
Database Link:	NP_005976 Entrez Gene 6615 Human
Background:	The Drosophila embryonic protein snail is a zinc finger transcriptional repressor which downregulates the expression of ectodermal genes within the mesoderm. The nuclear protein encoded by this gene is structurally similar to the Drosophila snail protein, and is also thought to be critical for mesoderm formation in the developing embryo. At least two variants of a similar processed pseudogene have been found on chromosome 2.
Synonyms:	dj710H13.1; SLUGH2; SNA; SNAH; SNAIL; SNAIL1
Protein Families:	Druggable Genome
Protein Pathways:	Adherens junction



[View online »](#)

Product images:

HEK293T cells were transfected with the pCMV6-ENTRY control (Left lane) or pCMV6-ENTRY SNAI1 (RC204581, Right lane) cDNA for 48 hrs and lysed. Equivalent amounts of cell lysates (5 ug per lane) were separated by SDS-PAGE and immunoblotted with anti-SNAI1. Positive lysates LY401811 (100ug) and LC401811 (20ug) can be purchased separately from OriGene.



Immunohistochemical staining of paraffin-embedded Carcinoma of Human kidney tissue using anti-SNAI1 mouse monoclonal antibody. (TA500316)