

## Product datasheet for **CF500269**

### FGF2 Mouse Monoclonal Antibody [Clone ID: OTI3D10]

#### Product data:

Product Type:	Primary Antibodies
Clone Name:	OTI3D10
Applications:	FC, WB
Recommended Dilution:	WB 1:1000, FLOW 1:100
Reactivity:	Human, Mouse, Rat
Host:	Mouse
Isotype:	IgG2b
Clonality:	Monoclonal
Immunogen:	Human recombinant protein fragment corresponding to amino acids 10-155 of human bFGF (NP_001997) produced in E.coli.
Formulation:	Lyophilized powder (original buffer 1X PBS, pH 7.3, 8% trehalose)
Reconstitution Method:	For reconstitution, we recommend adding 100uL distilled water to a final antibody concentration of about 1 mg/mL. To use this carrier-free antibody for conjugation experiment, we strongly recommend performing another round of desalting process. (OriGene recommends Zeba Spin Desalting Columns, 7KMWCO from Thermo Scientific)
Purification:	Purified from mouse ascites fluids or tissue culture supernatant by affinity chromatography (protein A/G)
Conjugation:	Unconjugated
Storage:	Store at -20°C as received.
Stability:	Stable for 12 months from date of receipt.
Predicted Protein Size:	30.6 kDa
Gene Name:	fibroblast growth factor 2
Database Link:	<a href="#">NP_001997</a> <a href="#">Entrez Gene 14173 Mouse</a> <a href="#">Entrez Gene 54250 Rat</a> <a href="#">Entrez Gene 2247 Human</a> <a href="#">P09038</a>



[View online »](#)

**Background:**

BFGF is a member of the fibroblast growth factor (FGF) family. FGF family members bind heparin and possess broad mitogenic and angiogenic activities. This protein has been implicated in diverse biological processes, such as limb and nervous system development, wound healing, and tumor growth. The mRNA for this gene contains multiple polyadenylation sites, and is alternatively translated from non-AUG (CUG) and AUG initiation codons, resulting in five different isoforms with distinct properties. The CUG-initiated isoforms are localized in the nucleus and are responsible for the intracrine effect, whereas, the AUG-initiated form is mostly cytosolic and is responsible for the paracrine and autocrine effects of this FGF.

**Synonyms:**

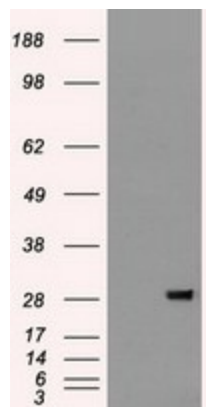
BFGF; FGF-2; FGFB; HBGF-2

**Protein Families:**

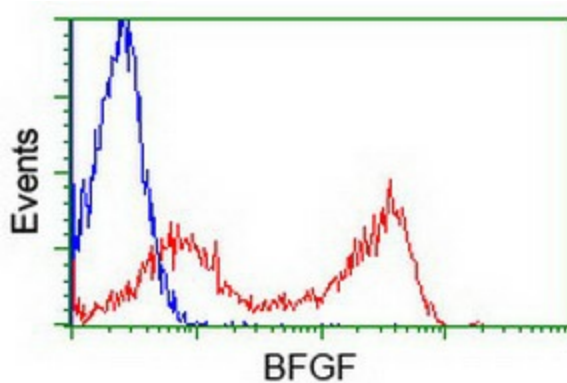
Druggable Genome, Secreted Protein

**Protein Pathways:**

MAPK signaling pathway, Melanoma, Pathways in cancer, Regulation of actin cytoskeleton

**Product images:**


HEK293T cells were transfected with the pCMV6-ENTRY control (Left lane) or pCMV6-ENTRY BFGF [RC217426], Right lane) cDNA for 48 hrs and lysed. Equivalent amounts of cell lysates (5 ug per lane) were separated by SDS-PAGE and immunoblotted with anti-BFGF. Positive lysates [LY400733] (100ug) and [LC400733] (20ug) can be purchased separately from OriGene.



HEK293T cells transfected with either [RC217426] overexpress plasmid (Red) or empty vector control plasmid (Blue) were immunostained by anti-BFGF antibody ([TA500269]), and then analyzed by flow cytometry.